

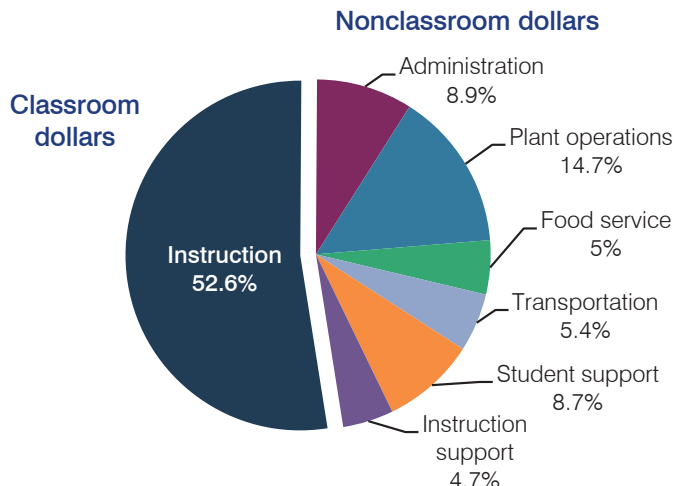
# Agua Fria Union High School District

Maricopa County  
 Efficiency peer groups 3 and T-5, Achievement peer group 8  
 Legislative district(s): 4, 13, 19 and 29

District size, location: Medium-Large, Suburb  
 Students attending: 6,842  
 Number of schools: 4

## OPERATIONAL EFFICIENCY

### Spending by operational area



### 5-year spending trend

Total spending per pupil decreased by 9 percent. Spending in the classroom decreased from 54.3 to 52.6 percent. Spending on administration decreased and spending on plant operations and instruction support increased. Spending on student support increased slightly, while spending on other nonclassroom areas remained stable.

### Cost measures relative to peer averages

Operational area	Measure	District	Peer average	State average
Administration	Cost per pupil	\$603	\$744	\$746
	Students per administrator	60	68	67
Plant operations	Cost per square foot	\$7.22	\$5.74	\$6.03
	Square footage per student	137	163	153
Food service	Cost per meal equivalent	\$2.70	\$2.84	\$2.58
Transportation	Cost per mile	\$3.73	\$3.54	\$3.55
	Cost per rider	\$1,197	\$1,359	\$1,015

Very low   Low   Comparable   High   Very high

### Per pupil spending by operational area

	District		Peer average	State average	National average
	2012	2013	2013	2013	2011
<b>Total</b>	<b>\$6,748</b>	<b>\$6,753</b>	<b>\$7,062</b>	<b>\$7,496</b>	<b>\$10,658</b>
<b>Classroom dollars</b>	<b>3,501</b>	<b>3,551</b>	<b>3,779</b>	<b>4,031</b>	<b>6,520</b>
<b>Nonclassroom dollars:</b>	<b>3,247</b>	<b>3,202</b>	<b>3,283</b>	<b>3,465</b>	<b>4,138</b>
Administration	619	603	744	746	1,138
Plant operations	1,009	993	929	924	1,015
Food service	341	338	329	396	412
Transportation	375	365	430	369	452
Student support	578	587	543	582	593
Instruction support	325	316	308	448	528

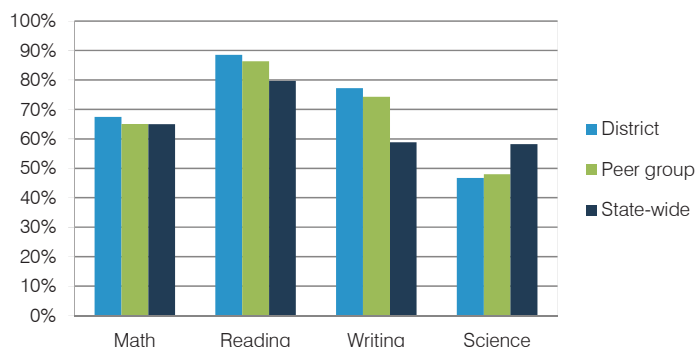
## STUDENT ACHIEVEMENT, TEACHER MEASURES, AND FINANCIAL ASSESSMENT

### ADE-reported district and school letter grades

District grade: **B**

Grade	Number of schools	Percentage of schools
A	0	0%
B	4	100%
C	0	0%
D	0	0%
F	0	0%
Not rated	0	0%

### Students who met state standards (AIMS)



### Student and teacher measures

Measure	District	Peer average	State average
Attendance rate	94%	94%	94%
Graduation rate (2012)	82%	85%	77%
Poverty rate (2012)	15%	18%	25%
Students per teacher	21.8	21.4	18.3
Average teacher salary	\$47,489	\$46,473	\$45,264
Amount from Proposition 301	\$4,817	\$4,933	\$3,784
Average years of teacher experience	8.1	9.5	10.9
Percentage of teachers in first 3 years	28%	21%	19%

### Financial stress assessment

Overall financial stress level: **Low**

Measure: 2011 through 2013	Assessment
Number of students attending district	Increase
Spending exceeded operating/capital budgets	No overspending
Spending increase election results	Voter-approved
Operating reserve percentage (max. 4%), trend	3.9%, Steady
Years of capital reserve held	1 to 3 years
Current financial and internal control status	Compliant

