

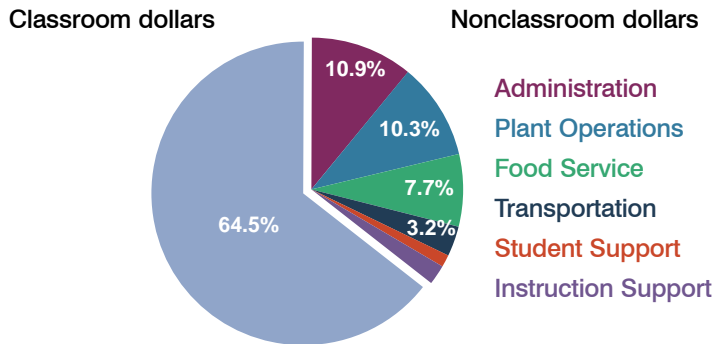
Aguila Elementary School District

Maricopa County
Peer groups: Efficiency Group 12, Achievement Group 20
Legislative district(s): 4

District size: Very Small
Students attending: 144
Number of schools: 1

OPERATIONAL EFFICIENCY

Spending by operational area



5-year trend

Total spending per pupil increased by 26 percent. Spending in the classroom increased significantly from 51.6 to 64.5 percent. Spending on most nonclassroom areas varied year to year, as is common for very small districts. Overall, spending on student and instruction support decreased significantly.

District's cost measures relative to peer group

Operational Area	Measure	District	Peer Average	State Average
Administration	Cost per pupil	\$1,175	\$2,437	\$728
	Students per administrator	38	30	66
Plant Operations	Cost per square foot	\$4.99	\$7.51	\$6.10
	Square footage per student	221	297	152
Food Service	Cost per meal equivalent	\$3.86	\$4.80	\$2.45
Transportation	Cost per mile	\$0.79	\$1.55	\$3.39
	Miles per rider	791	685	283

Very low Low Comparable High Very high

Per-pupil spending by operational area

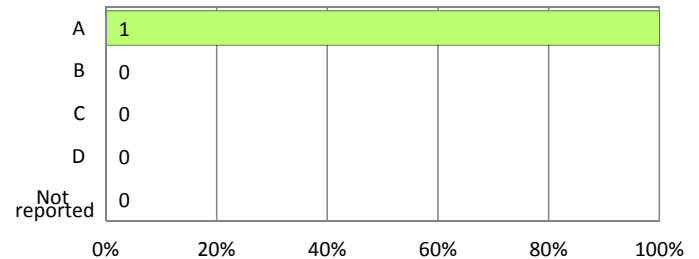
	District		Peer 2011	State 2011	National 2009
	2010	2011			
Total	\$12,793	\$10,739	\$14,927	\$7,485	\$10,591
Classroom dollars	\$8,167	\$6,922	\$7,803	\$4,098	\$6,456
Nonclassroom dollars:	\$4,626	\$3,817	\$7,124	\$3,387	\$4,135
Administration	1,172	1,175	2,437	728	1,147
Plant Operations	1,304	1,104	2,284	927	1,033
Food Service	428	832	742	375	404
Transportation	473	340	886	352	443
Student Support	363	136	451	571	573
Instruction Support	886	230	324	434	535

STUDENT ACHIEVEMENT AND TEACHER INFORMATION

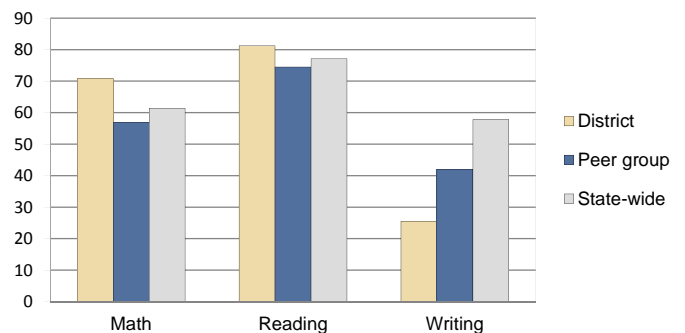
District and school letter grades

District grade: **A**

School grades (number and percentage):



Percentage of students meeting state standards (AIMS)



Student and teacher information

Measure	District	Peer Average	State Average
Attendance rate	94%	94%	95%
Graduation rate (2010)	N/A	N/A	N/A
Poverty rate (2010)	29%	31%	22%
Students per teacher	14.4	13.3	18.1
Average teacher salary	\$45,511	\$42,042	\$45,637
Average years of experience	15.2	13.4	10.9
Percent of teachers in first 3 years	11%	14%	16%

Proposition 301 pay, goals, and results

Average additional salary earned by teachers: \$860

Type of goal	Goal met?
Student achievement	■
Dropout/graduation rates	-
Student attendance	■
Parent/student satisfaction	■
Teacher attendance	-
Teacher professional development	■
Teacher evaluations	-
Tutoring	-
Other	-

■ = yes, □ = no, ▴ = partially, and - = no goal set