

Aguila Elementary School District

Maricopa County
Operational peer group: L
Legislative districts: 4

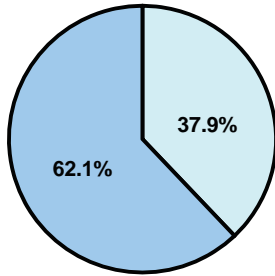
District size: Very Small
Students attending: 162
Number of schools: 1

OPERATIONAL EFFICIENCY

Average per-pupil spending

District
State

Classroom
\$8,105
\$4,497



Nonclassroom
\$4,940
\$3,411

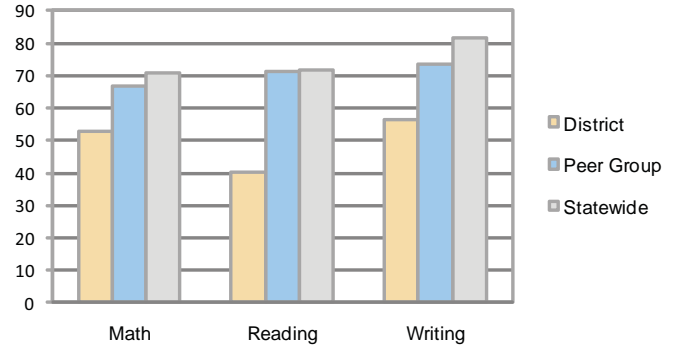
Total
\$13,045
\$7,908

5-year trend

Total spending per pupil increased by 63 percent. Spending in the classroom was very inconsistent year to year and increased significantly overall from 59.9 to 62.1 percent. Spending on administration and plant operations decreased, while spending in other nonclassroom areas varied year to year.

STUDENT ACHIEVEMENT AND TEACHER INFORMATION

Percentage of students meeting state standards (AIMS)



Adequate Yearly Progress (AYP) toward federal goals

The District's school did not meet all applicable AYP objectives for NCLB because some students did not demonstrate sufficient academic progress.

Student and teacher information

Measure	District	Peer average	State average
Attendance rate	95%	94%	95%
Graduation rate (2008)	N/A	54%	75%
Poverty rate	25%	31%	19%
Student/teacher ratio	13.5	10.8	17.1
Average teacher salary	\$53,990	\$45,165	\$45,209
Average years' experience	10.9	12.7	8.3
Percent of teachers in first 3 years	26%	15%	16%

District's cost measures relative to peer group

Operational Area	Measure	District	Peer Average	State Average
Administration	Cost per pupil	\$1,297	\$2,656	\$729
	Students per administrator	38	32	66
Plant Operations	Cost per square foot	\$6.33	\$7.53	\$6.40
	Square footage per student	196	318	144
Food Service	Cost per meal equivalent	\$3.81	\$5.10	\$2.53
Transportation	Cost per mile	\$1.10	\$1.79	\$3.36
	Miles per rider	837	710	271

Very Low Low Comparable High Very High

Per-pupil spending by function

	District		Peer	State	National
	2008	2009	2009	2009	2007
Total	\$10,319	\$13,045	\$16,311	\$7,908	\$9,683
Classroom dollars	\$5,921	\$8,105	\$8,757	\$4,497	\$5,903
Nonclassroom dollars:	\$4,398	\$4,940	\$7,554	\$3,411	\$3,780
Administration	1,154	1,297	2,656	729	1,050
Plant Operations	924	1,242	2,297	920	951
Food Service	735	893	859	382	369
Transportation	324	403	930	343	406
Student Support	190	317	474	594	512
Instruction Support	1,071	788	338	431	470
Other	0	0	0	12	22

Proposition 301

Teacher pay

On average, each teacher earned an additional \$4,757 in salary.

Performance pay plan goals and results

Type of goal	Goal met?
Student achievement	■
Dropout/ graduation rates	■
Student attendance	■
Parent/student satisfaction	■
Teacher attendance	■
Teacher professional development	■
Teacher evaluations	■
Tutoring	■
Other	■

■ = yes, □ = no, and ▴ = partially