

# Aguila Elementary School District

Maricopa County

Efficiency peer groups 11 and T-11, Achievement peer group 20

Legislative district(s): 13

District size, location:

Very small, Rural

Students attending:

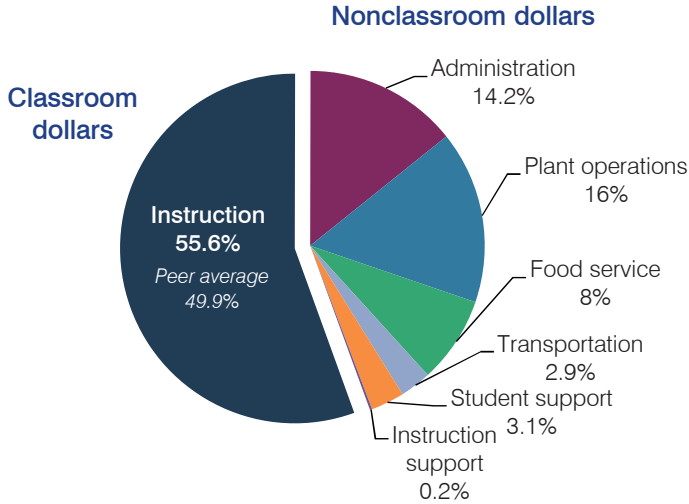
149

Number of schools:

1

## OPERATIONAL EFFICIENCY

### Spending by operational area



### Efficiency measures relative to peer averages

Operational area	Measure	District	Peer average	State average
Administration	Cost per pupil	\$1,333	\$3,013	\$780
	Students per administrative position	39	29	67
Plant operations	Cost per square foot	\$7.09	\$6.80	\$6.09
	Square footage per student	213	370	153
Food service	Cost per meal equivalent	\$3.12	\$5.66	\$2.79
	Cost per mile	\$0.75	\$1.55	\$3.66
Transportation	Cost per rider	\$582	\$1,620	\$1,071

### Per pupil spending

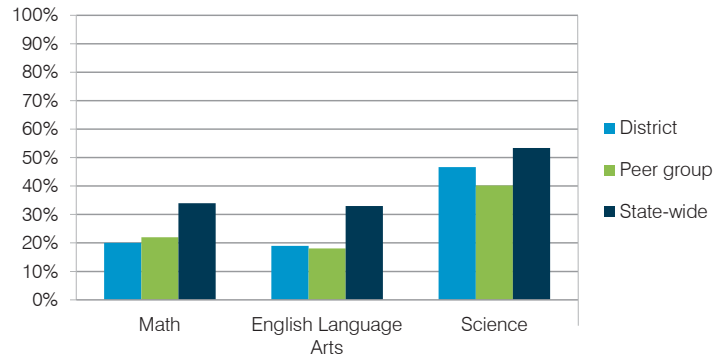
Spending by area	District		Peer average	State average
	2014	2015	2015	2015
Instruction	\$ 6,371	\$ 5,245	\$ 8,258	\$ 4,105
Administration	811	1,333	3,013	780
Plant operations	1,441	1,513	2,390	930
Food service	716	754	967	417
Transportation	312	278	1,127	371
Student support	67	292	664	613
Instruction support	27	16	572	442
<b>Total operational</b>	<b>\$ 9,745</b>	<b>\$ 9,431</b>	<b>\$ 16,991</b>	<b>\$ 7,658</b>
Land and buildings	\$ 2,964	\$ 0	\$ 961	\$ 641
Equipment	299	237	582	383
Interest	0	14	40	225
Other	0	615	90	150
<b>Total nonoperational</b>	<b>\$ 3,263</b>	<b>\$ 866</b>	<b>\$ 1,673</b>	<b>\$ 1,399</b>
<b>Total per pupil spending</b>	<b>\$ 13,008</b>	<b>\$ 10,297</b>	<b>\$ 18,664</b>	<b>\$ 9,057</b>

## STUDENT AND TEACHER MEASURES, FINANCIAL ASSESSMENT, AND REVENUE

### Student and teacher measures

Measure	District	Peer average	State average
Attendance rate	95%	94%	94%
Graduation rate (2014)	N/A	N/A	N/A
Poverty rate (2014)	42%	39%	23%
Students per teacher	14.9	14.2	18.6
Average teacher salary	\$43,022	\$43,639	\$46,008
Average years of teacher experience	20.2	10.7	11.0
Percentage of teachers in first 3 years	0%	15%	20%

### Students who met state standards



### Financial stress assessment

Overall financial stress level: **Moderate**

Measure: 2013 through 2015	Assessment
Change in number of district students	Steady
Spending exceeded operating/capital budgets	< \$1,000, isolated
Spending increase election results	No election held
Operating reserve percentage (max. 4%), trend	0.5%, Increasing
Years of capital reserve held	Less than 1 year
Current financial and internal control status	Compliant

Low Moderate High

### Per pupil revenues

Revenues by source	District		Peer average	State average
	2014	2015	2015	2015
Federal	\$ 2,070	\$ 1,916	\$ 2,858	\$ 1,299
State	8,798	4,768	4,521	3,517
Local	2,622	2,130	13,591	4,248
<b>Total revenues per pupil</b>	<b>\$13,490</b>	<b>\$ 8,814</b>	<b>\$20,970</b>	<b>\$ 9,064</b>
<b>Select revenues from common sources</b>				
Equalization formula funding	\$ 6,333	\$ 5,934	\$ 9,139	\$ 5,303
Grants	5,829	2,506	3,089	1,167
Donations and tax credits	70	43	159	78
<b>Select revenues from less common sources</b>				
			<b>Number of peers receiving</b>	
Desegregation	\$ 0	\$ 0	0 of 53	
Small school adjustment	0	0	41 of 53	
Federal impact aid	0	0	3 of 53	
Voter-approved levy increases	0	0	7 of 53	

# Aguila ESD—page 2

## Classroom dollar percentage

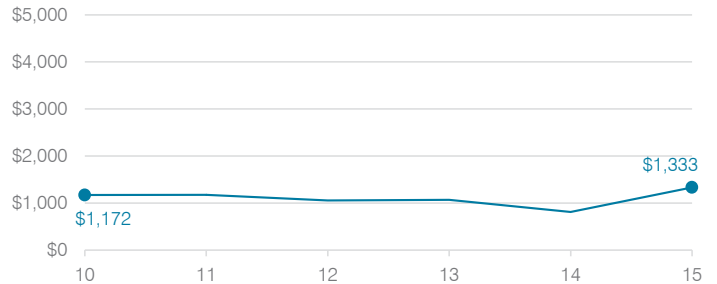
Year:	2001	2002	2003	2004	2005	2006	2007	2008	2009	2010	2011	2012	2013	2014	2015
Percentage:	59.9	61.4	62.6	59.9	55.1	51.6	57.9	57.4	62.1	63.8	64.5	58.5	63.1	65.4	55.6

### OPERATIONAL TRENDS Fiscal years as indicated

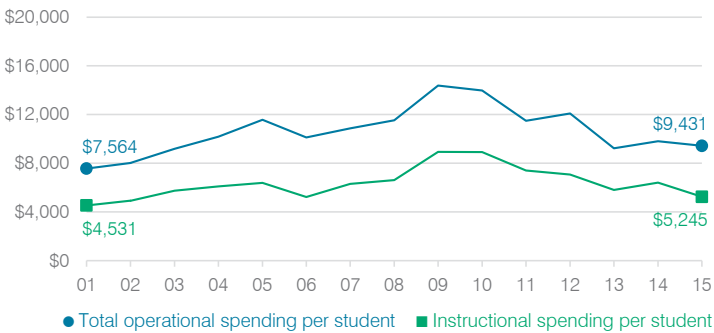
#### 5-year spending trend (2010 through 2015)

Total operational spending per pupil, adjusted for inflation, decreased by 32 percent. The percentage of dollars spent in the classroom varied year to year, decreasing overall from 63.8 to 55.6 percent. As a percentage of total operational spending, most nonclassroom areas also varied year to year, as is common for very small districts. Overall, administration, plant operations, and food service increased substantially.

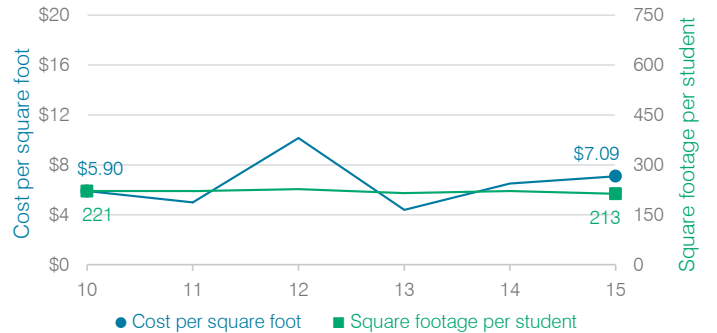
#### Administrative cost per student



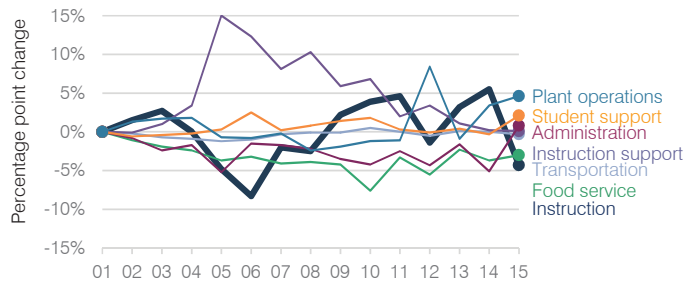
#### Total operational and instructional spending per student (inflation adjusted to 2015 dollars)



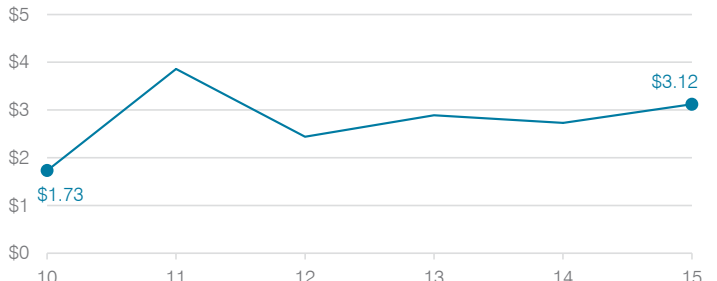
#### Plant cost per square foot and square footage per student



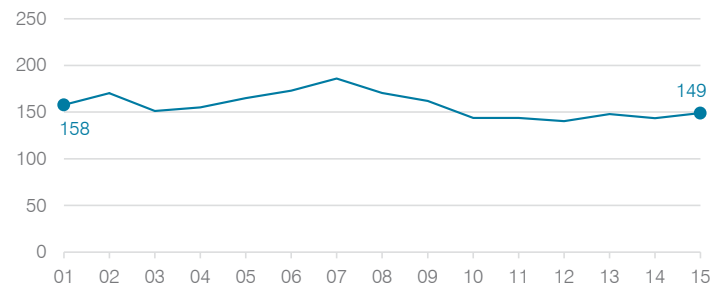
#### Changes in operational spending percentages



#### Food service cost per meal



#### Students attending



#### Transportation costs per mile and per rider

