

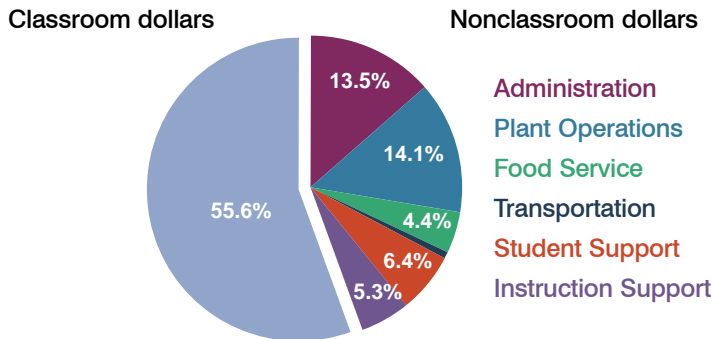
Ajo Unified School District

Pima County
Peer groups: Efficiency Group 6, Achievement Group 8
Legislative district(s): 25

District size: Small
Students attending: 418
Number of schools: 2

OPERATIONAL EFFICIENCY

Spending by operational area

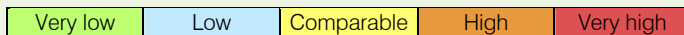


5-year trend

Total spending per pupil increased by 9 percent. Spending in the classroom varied year to year, increasing slightly overall from 55.4 to 55.6 percent. Spending on administration decreased, and spending on food service and student support increased slightly. Spending on other nonclassroom areas remained fairly stable.

District's cost measures relative to peer group

Operational Area	Measure	District	Peer Average	State Average
Administration	Cost per pupil	\$1,097	\$1,488	\$728
	Students per administrator	45	42	66
Plant Operations	Cost per square foot	\$4.45	\$5.22	\$6.10
	Square footage per student	256	292	152
Food Service	Cost per meal equivalent	\$2.99	\$3.04	\$2.45
Transportation	Cost per mile	\$1.48	\$2.12	\$3.39
	Miles per rider	366	363	283



Per-pupil spending by operational area

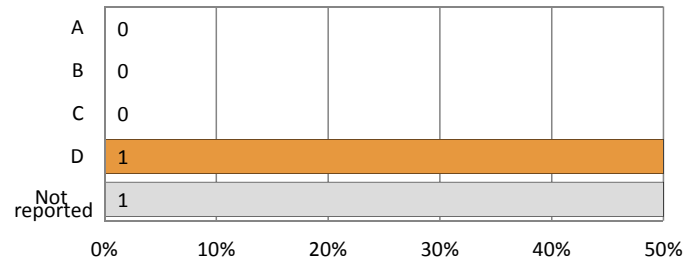
	District		Peer 2011	State 2011	National 2009
	2010	2011			
Total	\$8,915	\$8,117	\$9,916	\$7,485	\$10,591
Classroom dollars	\$5,366	\$4,513	\$4,919	\$4,098	\$6,456
Nonclassroom dollars:	\$3,549	\$3,604	\$4,997	\$3,387	\$4,135
Administration	1,086	1,097	1,488	728	1,147
Plant Operations	1,202	1,140	1,455	927	1,033
Food Service	366	359	449	375	404
Transportation	52	60	472	352	443
Student Support	439	522	611	571	573
Instruction Support	404	426	522	434	535

STUDENT ACHIEVEMENT AND TEACHER INFORMATION

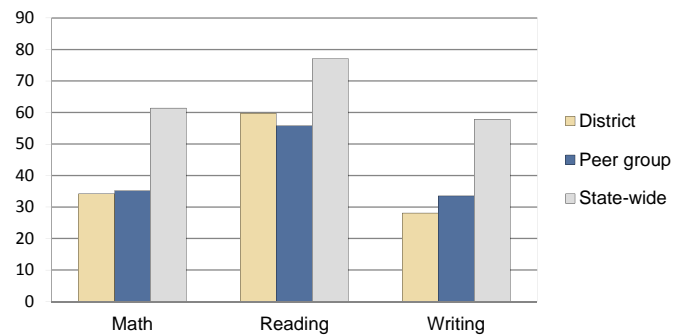
District and school letter grades

District grade: **D**

School grades (number and percentage):



Percentage of students meeting state standards (AIMS)



Student and teacher information

Measure	District	Peer Average	State Average
Attendance rate	93%	92%	95%
Graduation rate (2010)	78%	68%	78%
Poverty rate (2010)	36%	40%	22%
Students per teacher	15.8	15.5	18.1
Average teacher salary	\$36,282	\$42,449	\$45,637
Average years of experience	17.7	12.2	10.9
Percent of teachers in first 3 years	18%	16%	16%

Proposition 301 pay, goals, and results

Average additional salary earned by teachers: \$487

Type of goal	Goal met?
Student achievement	▴
Dropout/graduation rates	-
Student attendance	-
Parent/student satisfaction	-
Teacher attendance	-
Teacher professional development	-
Teacher evaluations	-
Tutoring	-
Other	▴

▴ = yes, □ = no, ▴ = partially, and - = no goal set