

Ajo Unified School District

Pima County
Operational peer group: F
Legislative districts: 25

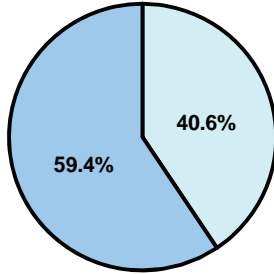
District size: Small
Students attending: 451
Number of schools: 2

OPERATIONAL EFFICIENCY

Average per-pupil spending

District
State

Classroom
\$5,365
\$4,497



Nonclassroom
\$3,671
\$3,411

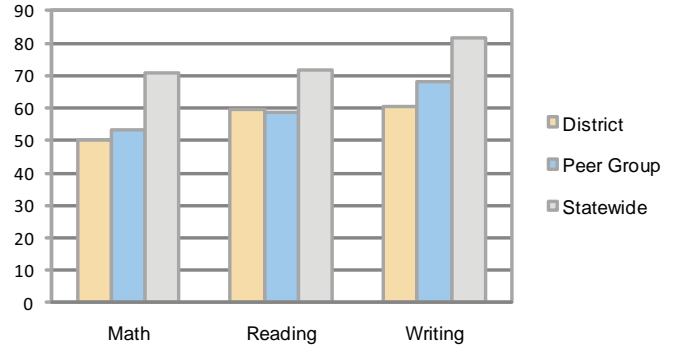
Total
\$9,036
\$7,908

5-year trend

Total spending per pupil increased by 37 percent. Spending in the classroom varied year to year and decreased slightly overall from 60.2 to 59.4 percent. Spending on instruction support increased, while spending in other nonclassroom areas varied from year to year.

STUDENT ACHIEVEMENT AND TEACHER INFORMATION

Percentage of students meeting state standards (AIMS)



Adequate Yearly Progress (AYP) toward federal goals

1 school met all applicable AYP objectives for NCLB. 1 did not because its graduation rate was not sufficient.

Student and teacher information

Measure	District	Peer average	State average
Attendance rate	92%	94%	95%
Graduation rate (2008)	68%	73%	75%
Poverty rate	32%	30%	19%
Student/teacher ratio	14.3	14.2	17.1
Average teacher salary	\$40,500	\$41,521	\$45,209
Average years' experience	16.7	10.8	8.3
Percent of teachers in first 3 years	12%	23%	16%

District's cost measures relative to peer group

Operational Area	Measure	District	Peer Average	State Average
Administration	Cost per pupil	\$1,088	\$1,524	\$729
	Students per administrator	50	42	66
Plant Operations	Cost per square foot	NR	\$5.78	\$6.40
	Square footage per student	237	284	144
Food Service	Cost per meal equivalent	\$2.59	\$3.38	\$2.53
Transportation	Cost per mile	NR	\$2.60	\$3.36
	Miles per rider	433	294	271

Very Low Low Comparable High Very High

Proposition 301

Teacher pay

On average, each teacher earned \$4,999 in additional salary.

Performance pay plan goals and results

Type of goal	Goal met?
Student achievement	▲
Dropout/ graduation rates	■
Student attendance	■
Parent/student satisfaction	■
Teacher attendance	■
Teacher professional development	■
Teacher evaluations	■
Tutoring	■
Other	■

■ = yes, □ = no, and ▲ = partially

Per-pupil spending by function

	District		Peer 2009	State 2009	National 2007
	2008	2009			
Total	\$8,156	\$9,036	\$10,596	\$7,908	\$9,683
Classroom dollars	\$4,637	\$5,365	\$5,393	\$4,497	\$5,903
Nonclassroom dollars:	\$3,519	\$3,671	\$5,203	\$3,411	\$3,780
Administration	999	1,088	1,524	729	1,050
Plant Operations	1,156	1,219	1,549	920	951
Food Service	336	330	496	382	369
Transportation	66	45	552	343	406
Student Support	410	477	593	594	512
Instruction Support	552	512	481	431	470
Other	0	0	8	12	22