

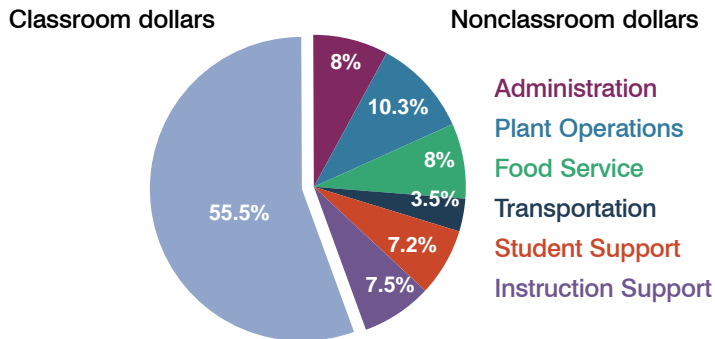
Alhambra Elementary School District

Maricopa County
Peer groups: Efficiency Group 8, Achievement Group 16
Legislative district(s): 13, 14 and 15

District size: Large
Students attending: 13,129
Number of schools: 15

OPERATIONAL EFFICIENCY

Spending by operational area



5-year trend

Total spending per pupil increased by 22 percent. Spending in the classroom decreased significantly from 61.2 to 55.5 percent. Overall, spending on administration, plant operations, and instruction support increased, while spending on other nonclassroom areas remained fairly stable.

District's cost measures relative to peer group

Operational Area	Measure	District	Peer Average	State Average
Administration	Cost per pupil	\$600	\$648	\$728
	Students per administrator	66	71	66
Plant Operations	Cost per square foot	\$6.45	\$6.32	\$6.10
	Square footage per student	121	130	152
Food Service	Cost per meal equivalent	\$2.73	\$2.29	\$2.45
Transportation	Cost per mile	\$6.31	\$4.66	\$3.39
	Miles per rider	116	180	283

Very low Low Comparable High Very high

Per-pupil spending by operational area

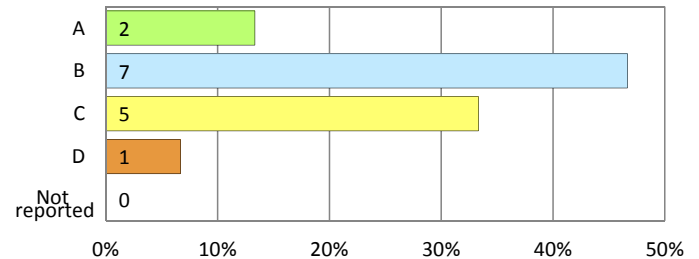
	District		Peer 2011	State 2011	National 2009
	2010	2011			
Total	\$7,397	\$7,523	\$7,201	\$7,485	\$10,591
Classroom dollars	\$4,084	\$4,173	\$4,033	\$4,098	\$6,456
Nonclassroom dollars:	\$3,313	\$3,350	\$3,168	\$3,387	\$4,135
Administration	611	600	648	728	1,147
Plant Operations	687	779	789	927	1,033
Food Service	614	603	467	375	404
Transportation	250	259	273	352	443
Student Support	538	545	498	571	573
Instruction Support	613	564	493	434	535

STUDENT ACHIEVEMENT AND TEACHER INFORMATION

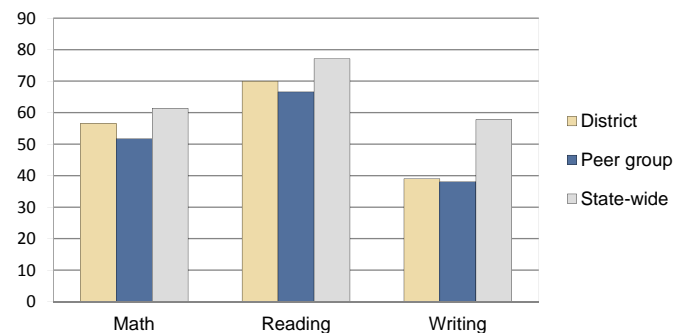
District and school letter grades

District grade: **B**

School grades (number and percentage):



Percentage of students meeting state standards (AIMS)



Student and teacher information

Measure	District	Peer Average	State Average
Attendance rate	95%	95%	95%
Graduation rate (2010)	N/A	N/A	N/A
Poverty rate (2010)	41%	46%	22%
Students per teacher	21.8	17.6	18.1
Average teacher salary	\$60,216	\$45,321	\$45,637
Average years of experience	9.3	9.5	10.9
Percent of teachers in first 3 years	23%	21%	16%

Proposition 301 pay, goals, and results

Average additional salary earned by teachers: \$2,231

Type of goal	Goal met?
Student achievement	▀
Dropout/graduation rates	-
Student attendance	■
Parent/student satisfaction	■
Teacher attendance	-
Teacher professional development	■
Teacher evaluations	▀
Tutoring	■
Other	-

■ = yes, □ = no, ▀ = partially, and - = no goal set