

Alhambra Elementary School District

Maricopa County
Operational peer group: H
Legislative districts: 13, 14, 15

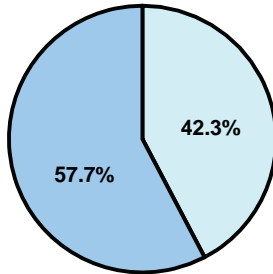
District size: Large
Students attending: 13,921
Number of schools: 15

OPERATIONAL EFFICIENCY

Average per-pupil spending

District
State

Classroom
\$4,419
\$4,497



Nonclassroom
\$3,236
\$3,411

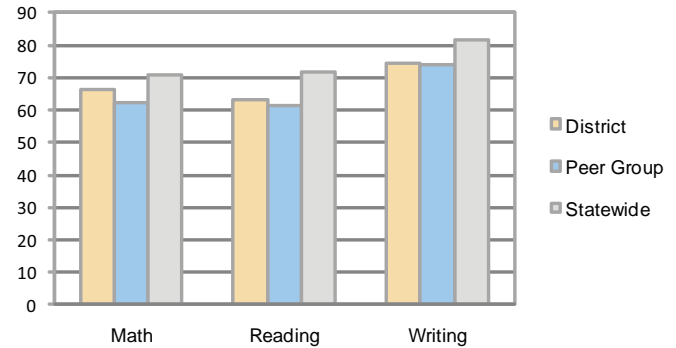
Total
\$7,655
\$7,908

5-year trend

Total spending per pupil increased by 31 percent. Spending in the classroom decreased significantly overall from 63 to 57.7 percent. Spending on instruction support increased significantly, while spending in other nonclassroom areas remained stable.

STUDENT ACHIEVEMENT AND TEACHER INFORMATION

Percentage of students meeting state standards (AIMS)



Adequate Yearly Progress (AYP) toward federal goals

13 schools met all applicable AYP objectives for NCLB. 2 did not because some students did not demonstrate sufficient academic progress.

Student and teacher information

Measure	District	Peer average	State average
Attendance rate	95%	95%	95%
Graduation rate (2008)	N/A	74%	75%
Poverty rate	29%	28%	19%
Student/teacher ratio	19.5	18.0	17.1
Average teacher salary	\$57,682	\$48,318	\$45,209
Average years' experience	8.3	8.9	8.3
Percent of teachers in first 3 years	33%	33%	16%

District's cost measures relative to peer group

Operational Area	Measure	District	Peer Average	State Average
Administration	Cost per pupil	\$505	\$705	\$729
	Students per administrator	70	67	66
Plant Operations	Cost per square foot	\$6.14	\$6.62	\$6.40
	Square footage per student	114	120	144
Food Service	Cost per meal equivalent	\$2.86	\$2.44	\$2.53
Transportation	Cost per mile	\$6.45	\$4.77	\$3.36
	Miles per rider	94	197	271

Very Low Low Comparable High Very High

Per-pupil spending by function

	District		Peer	State	National
	2008	2009	2009	2009	2007
Total	\$7,610	\$7,655	\$7,808	\$7,908	\$9,683
Classroom dollars	\$4,548	\$4,419	\$4,486	\$4,497	\$5,903
Nonclassroom dollars:	\$3,062	\$3,236	\$3,322	\$3,411	\$3,780
Administration	481	505	705	729	1,050
Plant Operations	649	700	786	920	951
Food Service	604	646	494	382	369
Transportation	227	231	272	343	406
Student Support	545	539	536	594	512
Instruction Support	555	615	529	431	470
Other	1	0	0	12	22

Proposition 301

Teacher pay

On average, each teacher earned an additional \$4,399 in salary, and each librarian, speech pathologist, counselor, peer teacher, media specialist, and teacher on assignment earned between \$561 and \$4,686 in additional salary.

Performance pay plan goals and results

Type of goal	Goal met?
Student achievement	▲
Dropout/ graduation rates	
Student attendance	■
Parent/student satisfaction	■
Teacher attendance	
Teacher professional development	▲
Teacher evaluations	
Tutoring	
Other	

■ = yes, □ = no, and ▲ = partially