

Classroom Dollars and Proposition 301 Results

Alhambra Elementary School District

Maricopa County

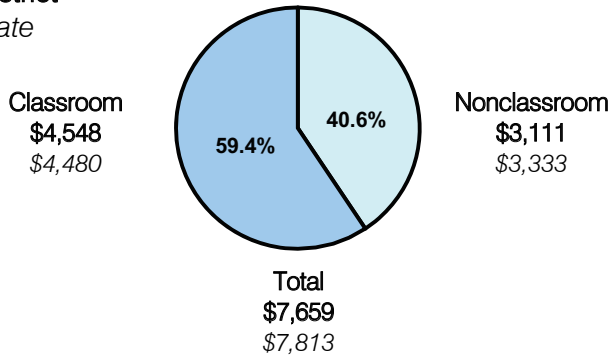
District size: Large
 Students attending: 14,224
 Number of schools: 15
 Number of certified teachers: 797

Classroom Dollars

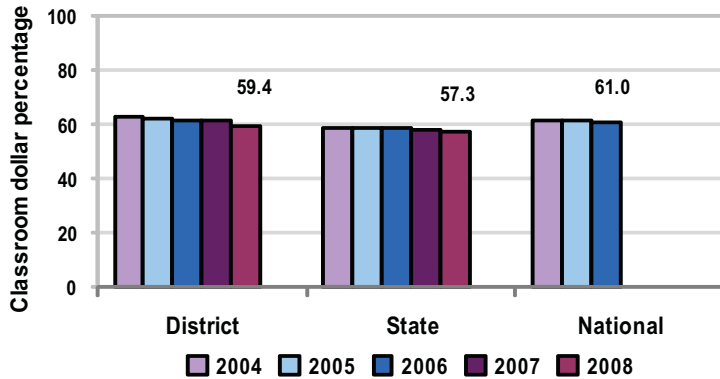
Fiscal year 2008 averages per pupil

District

State



5-year comparison



Expenditures by function

	Percentage					State 2008	National 2006
	2004	2005	2006	2007	2008		
Classroom dollars	63.0	61.8	61.2	61.2	59.4	57.3	61.0
Nonclassroom dollars:							
Administration	6.8	6.8	6.4	6.6	6.3	9.2	10.8
Plant operations	8.9	8.9	9.1	8.9	9.1	11.3	9.9
Food service	7.7	7.5	7.3	7.4	7.9	4.8	3.8
Transportation	2.7	2.7	2.8	2.9	3.0	4.4	4.2
Student support	6.5	6.9	6.9	7.2	7.1	7.4	5.2
Instruction support	4.4	5.4	6.3	5.8	7.2	5.4	4.9
Other						0.2	0.2

Comparative Information

	District			State
	2006	2007	2008	2008
Student/teacher ratio	20.1	18.3	17.9	17.3
Average teacher salary	\$49,047	\$52,621	\$54,357	\$44,967
Average years' experience	7.2	6.8	8.0	8.1

Classroom dollar ranking: 46 of 230 districts.

Proposition 301

District-reported 2008 results

Teacher pay

- On average, each teacher, librarian, speech pathologist, counselor, and media specialist earned between \$3,037 and \$4,744 in additional salary.

Performance

- The District accomplished most of its goals, which were the same as the prior fiscal year's goals and were based on district, school, and individual performance.
- Student achievement goals were set for the District, for groups of similar schools, and for individual schools. The district-wide goal was met, and most schools met their goals.
- Other goals were linked to professional development, teacher evaluations, participation in leadership activities, tutoring, student attendance, parental involvement, and parent-student satisfaction.

Menu

- Monies continued to be used to pay for approximately 3 teachers and 12 instructional aides to reduce class sizes and for collaborative peer teachers, data assessment coordinators, facilitators, and instructional support staff for professional development.
- 142 teachers and approximately 21 instructional assistants participated in AIMS intervention activities.