

Classroom Dollars and Proposition 301 Results

Alpine Elementary School District

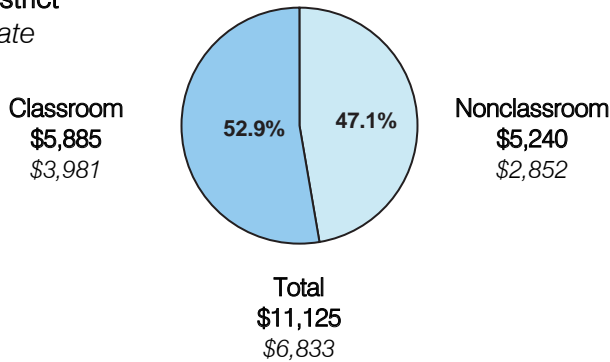
Apache County

District size: Very Small
 Students attending: 57
 Number of schools: 1
 Number of certified teachers: 4

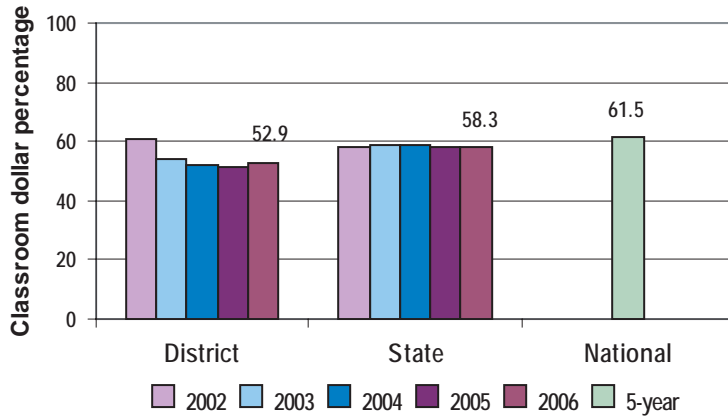
Classroom Dollars

Fiscal year 2006 averages per pupil

District
 State



5-year comparison



Expenditures by function

	District					State 2006	National 5-year
	2002	2003	2004	2005	2006		
Classroom dollars	61.0	54.3	52.3	51.4	52.9	58.3	61.5
Nonclassroom dollars:							
Administration	15.6	15.7	13.3	16.4	15.7	9.4	11.0
Plant operations	10.1	12.1	16.8	15.4	15.1	11.2	9.6
Food service						4.7	3.9
Transportation	8.5	12.3	10.7	10.6	10.7	4.2	4.0
Student support	4.8	5.2	6.8	5.3	3.6	7.2	5.1
Instruction support		0.4	0.1	0.8	1.9	4.8	4.7
Other				0.1	0.1	0.2	0.2

Comparative Information

	District			State 2006
	2004	2005	2006	
Student/teacher ratio	14.5	13.1	14.2	17.7
Average teacher salary	\$39,086	\$38,281	\$41,131	\$42,967
Average years' experience	9.3	8.8	9.5	8.3

Classroom dollar ranking: 152 of 229 districts.

Proposition 301

District-reported 2006 results

Teacher pay

- On average, each teacher earned an additional \$5,600 in salary.

Performance

- The District accomplished most of its goals, which were based on school and individual performance.
- All students achieved 1 year's growth in writing.
- All teachers received professional development in Six-Traits Writing and Differentiated Instruction, increased the use of technology in the classroom, and participated in tutoring activities.
- The goal requiring the student attendance rate to be at least 95 percent was not met.

Menu

- Monies were used solely to increase teacher compensation.