

Alpine Elementary School District

Apache County
Peer groups: Efficiency Group 12, Achievement Group 19
Legislative district(s): 5

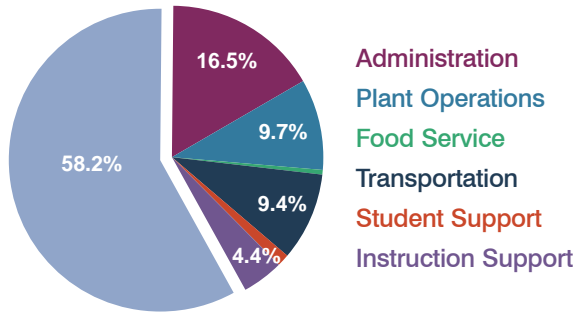
District size: Very Small
Students attending: 53
Number of schools: 1

OPERATIONAL EFFICIENCY

Spending by operational area

Classroom dollars

Nonclassroom dollars

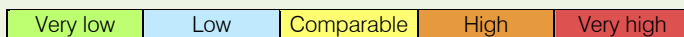


5-year trend

Total spending per pupil increased by 33 percent. Spending in the classroom varied year to year, increasing significantly overall from 52.9 to 58.2 percent. Spending on most nonclassroom areas also varied year to year, as is common for very small districts. Overall, spending on plant operations and student support decreased significantly.

District's cost measures relative to peer group

Operational Area	Measure	District	Peer Average	State Average
Administration	Cost per pupil	\$2,448	\$2,437	\$728
	Students per administrator	35	30	66
Plant Operations	Cost per square foot	\$5.10	\$7.51	\$6.10
	Square footage per student	282	297	152
Food Service	Cost per meal equivalent	N/A	\$4.80	\$2.45
Transportation	Cost per mile	\$0.78	\$1.55	\$3.39
	Miles per rider	1,473	685	283



Per-pupil spending by operational area

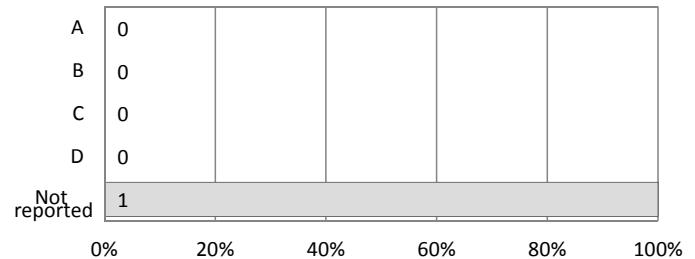
	District		Peer 2011	State 2011	National 2009
	2010	2011			
Total	\$15,424	\$14,830	\$14,927	\$7,485	\$10,591
Classroom dollars	\$9,122	\$8,633	\$7,803	\$ 4,098	\$ 6,456
Nonclassroom dollars:	\$6,302	\$6,197	\$7,124	\$ 3,387	\$ 4,135
Administration	2,194	2,448	2,437	728	1,147
Plant Operations	1,881	1,435	2,284	927	1,033
Food Service	50	68	742	375	404
Transportation	1,302	1,400	886	352	443
Student Support	265	189	451	571	573
Instruction Support	610	657	324	434	535

STUDENT ACHIEVEMENT AND TEACHER INFORMATION

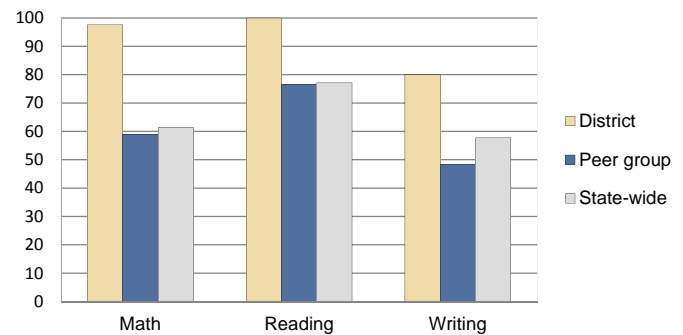
District and school letter grades

District grade: **N/A**

School grades (number and percentage):



Percentage of students meeting state standards (AIMS)



Student and teacher information

Measure	District	Peer Average	State Average
Attendance rate	96%	95%	95%
Graduation rate (2010)	N/A	N/A	N/A
Poverty rate (2010)	25%	24%	22%
Students per teacher	10.6	12.4	18.1
Average teacher salary	\$53,732	\$45,745	\$45,637
Average years of experience	16.6	12.9	10.9
Percent of teachers in first 3 years	20%	16%	16%

Proposition 301 pay, goals, and results

Average additional salary earned by teachers: \$2,800

Type of goal	Goal met?
Student achievement	■
Dropout/graduation rates	-
Student attendance	■
Parent/student satisfaction	■
Teacher attendance	-
Teacher professional development	■
Teacher evaluations	-
Tutoring	-
Other	-

■ = yes, □ = no, ▴ = partially, and - = no goal set