

# Alpine Elementary School District

Apache County

Efficiency peer groups 11 and T-11, Achievement peer group 19

Legislative district(s): 7

District size, location:

Very small, Rural

Students attending:

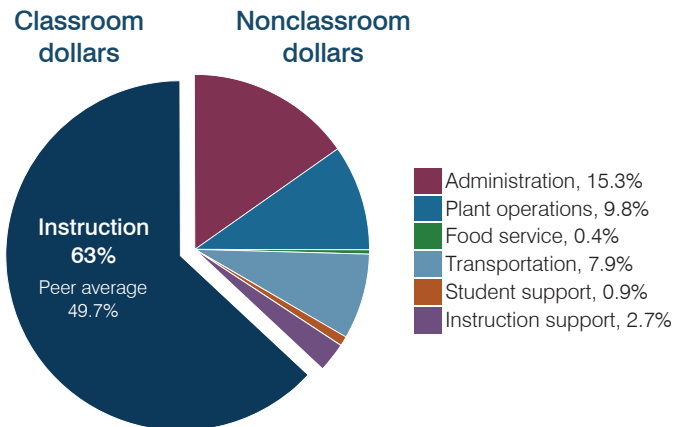
57

Number of schools:

1

## OPERATIONAL EFFICIENCY

### Spending by operational area



### Efficiency measures relative to peer averages

Operational area	Measure	District	Peer average	State average
Administration	Cost per pupil	\$2,382	\$2,987	\$806
	Students per administrative position	38	30	67
Plant operations	Cost per square foot	\$5.89	\$7.21	\$6.10
	Square footage per student	259	364	154
Food service	Cost per meal	N/A	\$5.54	\$2.81
	Cost per mile	\$0.43	\$1.75	\$3.72
Transportation	Cost per rider	\$1,406	\$1,495	\$1,092

### Per pupil spending

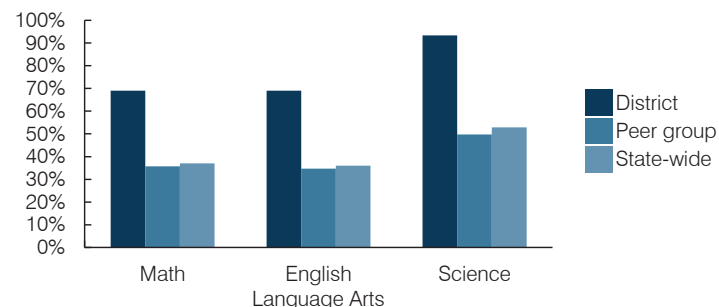
Spending by area	District		Peer average 2016	State average 2016
	2015	2016		
Instruction	\$ 10,040	\$ 9,794	\$ 8,342	\$ 4,145
Administration	2,681	2,382	2,987	806
Plant operations	1,425	1,524	2,523	939
Food service	51	54	918	415
Transportation	1,532	1,224	1,108	364
Student support	155	132	664	633
Instruction support	525	426	514	444
<b>Total operational</b>	<b>\$ 16,409</b>	<b>\$ 15,536</b>	<b>\$ 17,056</b>	<b>\$ 7,746</b>
Land and buildings	\$ 0	\$ 223	\$ 2,005	\$ 621
Equipment	391	52	819	400
Interest	0	0	31	216
Other	0	0	87	153
<b>Total nonoperational</b>	<b>\$ 391</b>	<b>\$ 275</b>	<b>\$ 2,942</b>	<b>\$ 1,390</b>
<b>Total per pupil spending</b>	<b>\$ 16,800</b>	<b>\$ 15,811</b>	<b>\$ 19,998</b>	<b>\$ 9,136</b>

## STUDENT AND TEACHER MEASURES, FINANCIAL ASSESSMENT, AND REVENUES

### Student and teacher measures

Measure	District	Peer average	State average
Attendance rate (2015)	96%	94%	94%
Graduation rate (2015)	N/A	N/A	N/A
Poverty rate (2015)	30%	34%	23%
Students per teacher	11.5	16.1	18.6
Average teacher salary	\$61,192	\$47,933	\$46,384
Amount from Proposition 301	\$4,500	\$4,405	\$5,315
Average years of teacher experience	19.0	12.0	11.0
Percentage of teachers in first 3 years	0%	18%	20%

### Students who passed state assessments



### Financial stress assessment

Overall financial stress level: **Low**

Measure: 2014 through 2016

Assessment

Change in number of district students	Small school adjustment
Spending exceeded operating/capital budgets	No overspending
Spending increase election results	No election held
Operating reserve percentage, Trend	9.0%, Increasing
Years of capital reserve held	More than 3 years
Current financial and internal control status	Compliant

Low Moderate High

### Per pupil revenues

Revenues by source	District		Peer average 2016	State average 2016
	2015	2016		
Federal	\$ 4,487	\$ 3,468	\$ 3,667	\$ 1,301
State	7,730	7,615	6,156	3,780
Local	7,972	6,482	14,438	4,268
<b>Total revenues per pupil</b>	<b>\$ 20,189</b>	<b>\$ 17,565</b>	<b>\$ 24,261</b>	<b>\$ 9,349</b>

### Select revenues from common sources

Equalization formula funding	\$ 14,419	\$ 13,987	\$ 9,047	\$ 5,471
Grants	4,953	3,857	4,768	1,182
Donations and tax credits	225	203	186	86

### Select revenues from less common sources

	Number of peers receiving		
Desegregation	\$ 0	\$ 0	0 of 52
Small school adjustment	0	0	44 of 52
Federal impact aid	0	0	3 of 52
Voter-approved levy increases	0	0	7 of 52

**Classroom dollar percentage**

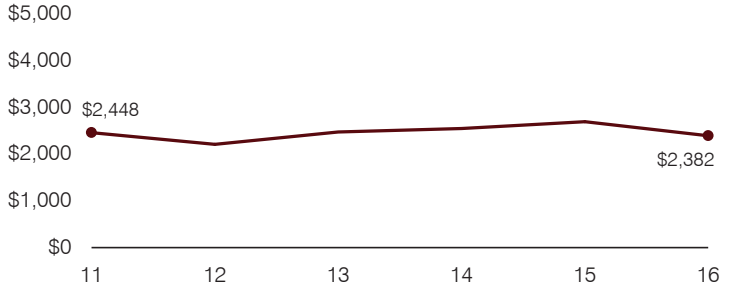
Year:	2001	2002	2003	2004	2005	2006	2007	2008	2009	2010	2011	2012	2013	2014	2015	2016
Percentage:	55.3	61.0	54.3	52.3	51.4	52.9	51.0	56.2	58.4	59.1	58.2	57.9	59.2	59.3	61.2	63.0

**OPERATIONAL TRENDS**  
Fiscal years as indicated

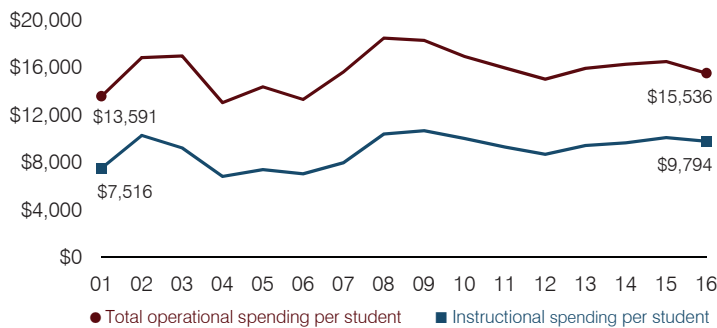
**5-year spending trend (2011 through 2016)**

Total operational spending per pupil, adjusted for inflation, decreased by 3 percent. The percentage of dollars spent in the classroom increased from 58.2 to 63 percent. As a percentage of total operational spending, some nonclassroom areas varied year to year, as is common for very small districts. Overall, administration, transportation, and instruction support decreased.

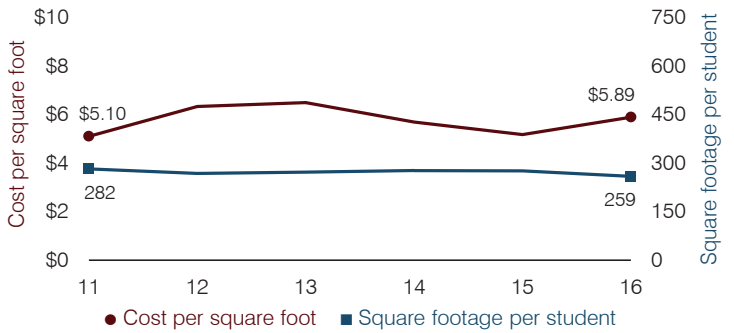
**Administrative cost per pupil**



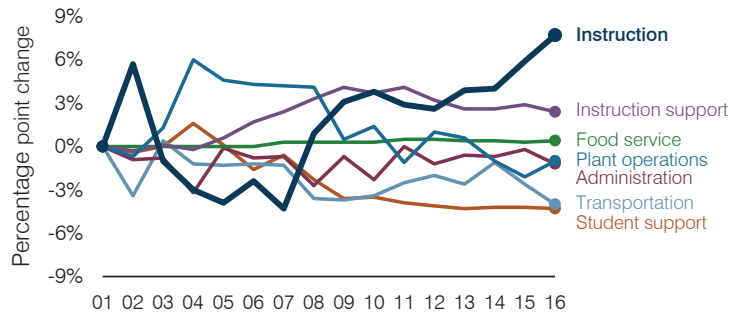
**Total operational and instructional spending per pupil (inflation adjusted to 2016 dollars)**



**Plant cost per square foot and square footage per student**



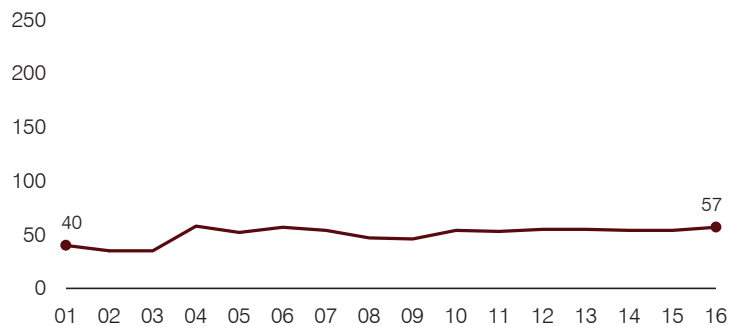
**Changes in operational spending percentages**



**Food service cost per meal**

Food service cost per meal trend is not shown because the District did not operate a food service program during all or a substantial portion of fiscal years 2011 through 2016.

**Students attending**



**Transportation costs per mile and per rider**

