

# Classroom Dollars and Proposition 301 Results

## Alpine Elementary School District

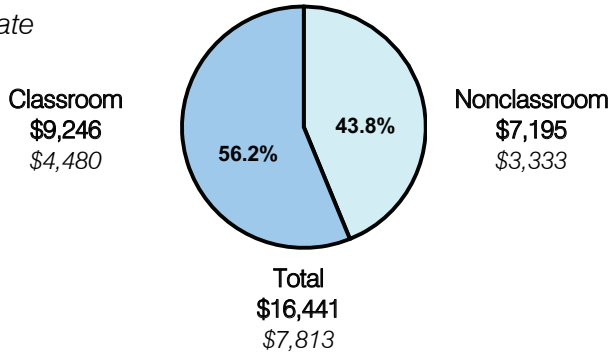
Apache County

District size: Very Small  
 Students attending: 47  
 Number of schools: 1  
 Number of certified teachers: 6

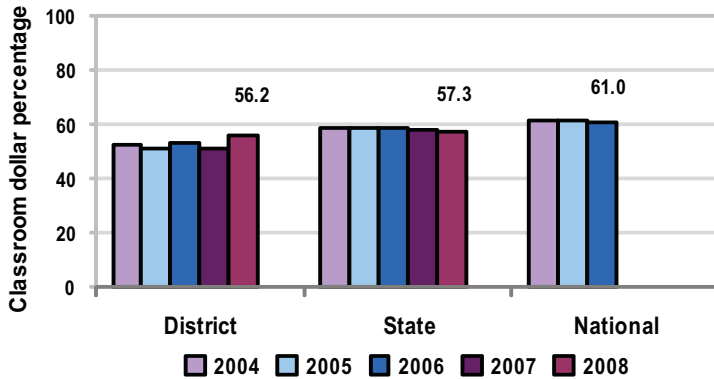
### Classroom Dollars

Fiscal year 2008 averages per pupil

District  
State



5-year comparison



### Expenditures by function

	Percentage					State 2008	National 2006
	District						
	2004	2005	2006	2007	2008		
Classroom dollars	52.3	50.7	52.9	51.0	56.2	57.3	61.0
Nonclassroom dollars:							
Administration	13.3	18.6	15.7	15.8	13.8	9.2	10.8
Plant operations	16.8	13.3	15.1	15.0	14.9	11.3	9.9
Food service		0.4		0.3	0.3	4.8	3.8
Transportation	10.7	10.5	10.7	10.6	8.3	4.4	4.2
Student support	6.8	3.5	3.6	4.6	2.9	7.4	5.2
Instruction support	0.1	3.0	1.9	2.7	3.6	5.4	4.9
Other			0.1			0.2	0.2

### Comparative Information

	District			State 2008
	2006	2007	2008	
Student/teacher ratio	14.2	10.8	8.5	17.3
Average teacher salary	\$41,131	\$44,051	\$47,015	\$44,967
Average years' experience	9.5	7.8	6.7	8.1

Classroom dollar ranking: 98 of 230 districts.

### Proposition 301

#### District-reported 2008 results

##### *Teacher pay*

- On average, each teacher earned an additional \$4,800 in salary.

##### *Performance.*

- The District accomplished all of its goals, which were similar to the prior fiscal year's goals and were based on school and individual performance.
- Students' AIMS test reading scores increased by 3.5 percent.
- All teachers participated in at least 45 hours of professional development activities focused on reading.
- The student attendance rate was 95 percent.
- Parent satisfaction surveys showed a 94 percent satisfaction rate.

##### *Menu*

- Monies were used solely to increase teacher compensation.