

Altar Valley Elementary School District

Pima County
Operational peer group: J
Legislative districts: 25, 27

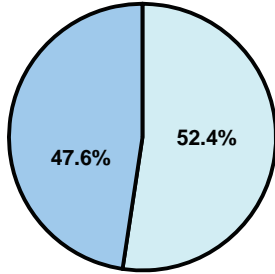
District size: Medium
Students attending: 694
Number of schools: 2

OPERATIONAL EFFICIENCY

Average per-pupil spending

District
State

Classroom
\$4,754
\$4,497



Nonclassroom
\$5,229
\$3,411

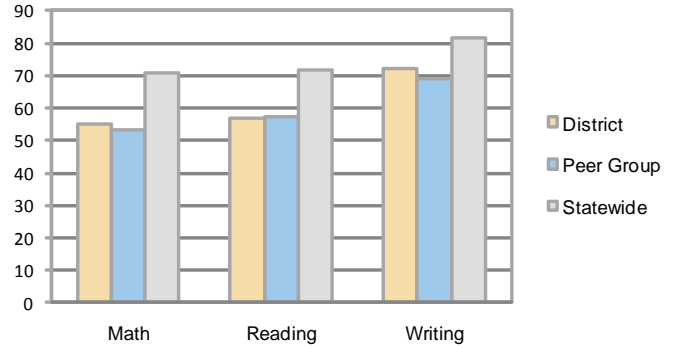
Total
\$9,983
\$7,908

5-year trend

Total spending per pupil increased by 22 percent. Spending in the classroom varied year to year and decreased overall from 48.6 to 47.6 percent. Spending on student and instruction support increased, while spending in other nonclassroom areas varied year to year.

STUDENT ACHIEVEMENT AND TEACHER INFORMATION

Percentage of students meeting state standards (AIMS)



Adequate Yearly Progress (AYP) toward federal goals

2 schools met all applicable AYP objectives for NCLB.

District's cost measures relative to peer group

Operational Area	Measure	District	Peer Average	State Average
Administration	Cost per pupil	\$1,200	\$921	\$729
	Students per administrator	46	64	66
Plant Operations	Cost per square foot	\$8.76	\$6.71	\$6.40
	Square footage per student	137	125	144
Food Service	Cost per meal equivalent	\$2.66	\$2.56	\$2.53
Transportation	Cost per mile	\$2.17	\$3.04	\$3.36
	Miles per rider	NR	145	271

Very Low Low Comparable High Very High

Student and teacher information

Measure	District	Peer average	State average
Attendance rate	92%	93%	95%
Graduation rate (2008)	N/A	70%	75%
Poverty rate	30%	31%	19%
Student/teacher ratio	16.1	14.9	17.1
Average teacher salary	\$38,034	\$41,086	\$45,209
Average years' experience	9.2	11.1	8.3
Percent of teachers in first 3 years	27%	20%	16%

Proposition 301

Teacher pay

On average, each teacher and the counselor earned \$3,773 in additional salary.

Per-pupil spending by function

	District		Peer	State	National
	2008	2009	2009	2009	2007
Total	\$10,163	\$9,983	\$7,752	\$7,908	\$9,683
Classroom dollars	\$4,881	\$4,754	\$4,151	\$4,497	\$5,903
Nonclassroom dollars:	\$5,282	\$5,229	\$3,601	\$3,411	\$3,780
Administration	1,329	1,200	921	729	1,050
Plant Operations	1,277	1,204	879	920	951
Food Service	601	592	524	382	369
Transportation	1,171	1,027	410	343	406
Student Support	550	749	483	594	512
Instruction Support	354	457	384	431	470
Other	0	0	0	12	22

Performance pay plan goals and results

Type of goal	Goal met?
Student achievement	■
Dropout/ graduation rates	■
Student attendance	■
Parent/student satisfaction	■
Teacher attendance	■
Teacher professional development	■
Teacher evaluations	■
Tutoring	■
Other	■

■ = yes, □ = no, and ▴ = partially