

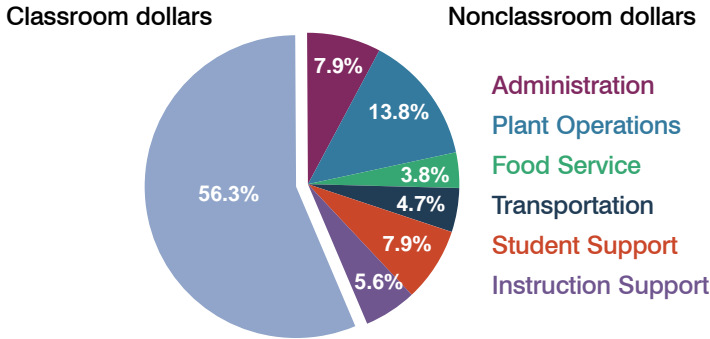
Amphitheater Unified School District

Pima County
Peer groups: Efficiency Group 2, Achievement Group 3
Legislative district(s): 26, 27 and 28

District size: Large
Students attending: 14,169
Number of schools: 20

OPERATIONAL EFFICIENCY

Spending by operational area

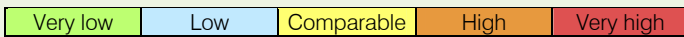


5-year trend

Total spending per pupil increased by 13 percent. Spending in the classroom varied year to year, decreasing slightly overall from 56.5 to 56.3 percent. Spending on student support increased, while spending on other nonclassroom areas remained fairly stable.

District's cost measures relative to peer group

Operational Area	Measure	District	Peer Average	State Average
Administration	Cost per pupil	\$615	\$611	\$728
	Students per administrator	55	70	66
Plant Operations	Cost per square foot	\$6.11	\$6.25	\$6.10
	Square footage per student	176	147	152
Food Service	Cost per meal equivalent	\$2.55	\$2.59	\$2.45
Transportation	Cost per mile	\$2.86	\$3.34	\$3.39
	Miles per rider	290	324	283



Per-pupil spending by operational area

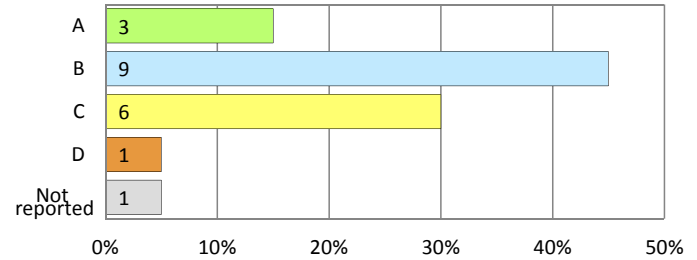
	District		Peer 2011	State 2011	National 2009
	2010	2011			
Total	\$8,089	\$7,766	\$6,961	\$7,485	\$10,591
Classroom dollars	\$4,652	\$4,375	\$3,867	\$4,098	\$6,456
Nonclassroom dollars:	\$3,437	\$3,391	\$3,094	\$3,387	\$4,135
Administration	643	615	611	728	1,147
Plant Operations	1,034	1,072	909	927	1,033
Food Service	311	291	304	375	404
Transportation	390	368	333	352	443
Student Support	575	614	518	571	573
Instruction Support	484	431	419	434	535

STUDENT ACHIEVEMENT AND TEACHER INFORMATION

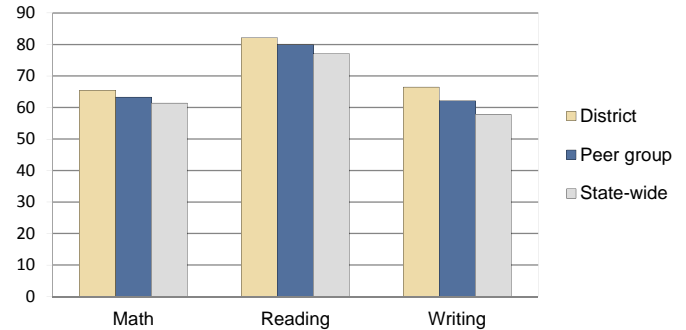
District and school letter grades

District grade: **B**

School grades (number and percentage):



Percentage of students meeting state standards (AIMS)



Student and teacher information

Measure	District	Peer Average	State Average
Attendance rate	93%	94%	95%
Graduation rate (2010)	82%	81%	78%
Poverty rate (2010)	20%	22%	22%
Students per teacher	16.3	18.0	18.1
Average teacher salary	\$46,252	\$46,077	\$45,637
Average years of experience	12.5	12.6	10.9
Percent of teachers in first 3 years	12%	9%	16%

Proposition 301 pay, goals, and results

Average additional salary earned by teachers: \$3,610

Type of goal	Goal met?
Student achievement	■
Dropout/graduation rates	-
Student attendance	-
Parent/student satisfaction	-
Teacher attendance	-
Teacher professional development	■
Teacher evaluations	-
Tutoring	-
Other	■

■ = yes, □ = no, ▴ = partially, and - = no goal set