

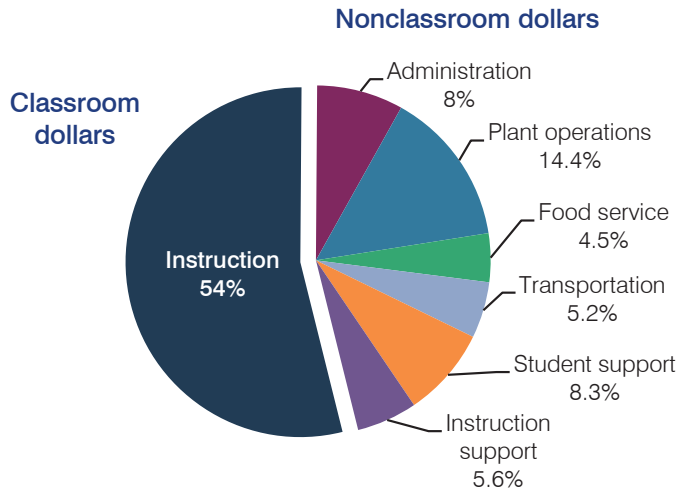
# Amphitheater Unified School District

Pima County  
 Efficiency peer groups 2 and T-4, Achievement peer group 3  
 Legislative district(s): 3, 9, and 11

District size, location: Large, Suburb  
 Students attending: 13,780  
 Number of schools: 20

## OPERATIONAL EFFICIENCY

### Spending by operational area



### 5-year spending trend

Total spending per pupil decreased by 3 percent. Spending in the classroom varied year to year, decreasing overall from 57.5 to 54 percent. Spending on plant operations increased substantially and spending on student support increased, while spending on instruction support decreased. Spending on other nonclassroom areas remained fairly stable.

### Cost measures relative to peer averages

Operational area	Measure	District	Peer average	State average
Administration	Cost per pupil	\$623	\$658	\$746
	Students per administrator	55	68	67
Plant operations	Cost per square foot	\$6.24	\$6.23	\$6.03
	Square footage per student	182	145	153
Food service	Cost per meal equivalent	\$2.69	\$2.58	\$2.58
Transportation	Cost per mile	\$3.29	\$3.41	\$3.55
	Cost per rider	\$1,004	\$1,047	\$1,015

Very low   Low   Comparable   High   Very high

### Per pupil spending by operational area

	District		Peer average	State average	National average
	2012	2013	2013	2013	2011
<b>Total</b>	<b>\$7,830</b>	<b>\$7,839</b>	<b>\$7,059</b>	<b>\$7,496</b>	<b>\$10,658</b>
<b>Classroom dollars</b>	<b>4,300</b>	<b>4,230</b>	<b>3,824</b>	<b>4,031</b>	<b>6,520</b>
<b>Nonclassroom dollars:</b>	<b>3,530</b>	<b>3,609</b>	<b>3,235</b>	<b>3,465</b>	<b>4,138</b>
Administration	637	623	658	746	1,138
Plant operations	1,125	1,134	896	924	1,015
Food service	304	355	332	396	412
Transportation	388	405	351	369	452
Student support	636	651	524	582	593
Instruction support	440	441	474	448	528

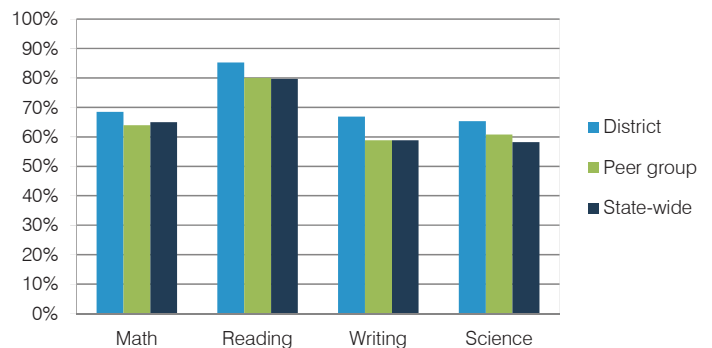
## STUDENT ACHIEVEMENT, TEACHER MEASURES, AND FINANCIAL ASSESSMENT

### ADE-reported district and school letter grades

District grade: **B**

Grade	Number of schools	Percentage of schools
A	7	35%
B	7	35%
C	4	20%
D	1	5%
F	0	0%
Not rated	1	5%

### Students who met state standards (AIMS)



### Student and teacher measures

Measure	District	Peer average	State average
Attendance rate	93%	93%	94%
Graduation rate (2012)	85%	80%	77%
Poverty rate (2012)	24%	25%	25%
Students per teacher	17.5	17.9	18.3
Average teacher salary	\$42,760	\$44,916	\$45,264
Amount from Proposition 301	\$4,461	\$3,845	\$3,784
Average years of teacher experience	12.5	12.0	10.9
Percentage of teachers in first 3 years	16%	18%	19%

### Financial stress assessment

Overall financial stress level: **Moderate**

Measure: 2011 through 2013

Measure	Assessment
Number of students attending district	Moderate decrease
Spending exceeded operating/capital budgets	No overspending
Spending increase election results	No election held
Operating reserve percentage (max. 4%), trend	2.1%, Decreasing
Years of capital reserve held	More than 3 years
Current financial and internal control status	Compliant

Stress level

