

Amphitheater Unified School District

Pima County
Operational peer group: B
Legislative districts: 26, 27, 28

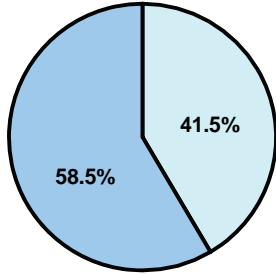
District size: Large
Students attending: 15,088
Number of schools: 20

OPERATIONAL EFFICIENCY

Average per-pupil spending

District
State

Classroom
\$5,022
\$4,497



Nonclassroom
\$3,567
\$3,411

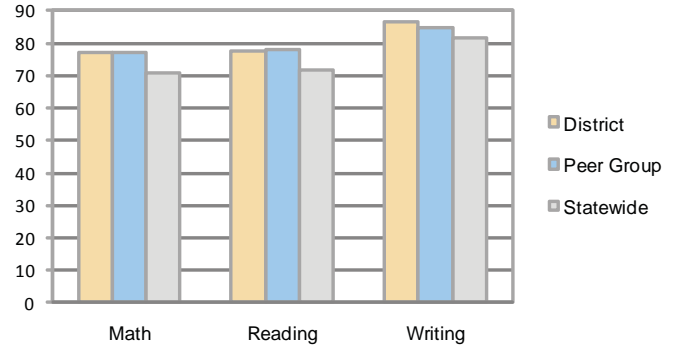
Total
\$8,589
\$7,908

5-year trend

Total spending per pupil increased by 44 percent. Spending in the classroom increased overall from 56.7 to 58.5 percent. Spending on student and instruction support also increased, while spending on administration and plant operations decreased.

STUDENT ACHIEVEMENT AND TEACHER INFORMATION

Percentage of students meeting state standards (AIMS)



Adequate Yearly Progress (AYP) toward federal goals

18 schools met all applicable AYP objectives for NCLB. 2 did not because some students did not demonstrate sufficient academic progress.

District's cost measures relative to peer group

Operational Area	Measure	District	Peer Average	State Average
Administration	Cost per pupil	\$652	\$634	\$729
	Students per administrator	52	67	66
Plant Operations	Cost per square foot	\$6.41	\$6.67	\$6.40
	Square footage per student	164	142	144
Food Service	Cost per meal equivalent	\$2.66	\$2.64	\$2.53
Transportation	Cost per mile	\$3.03	\$3.44	\$3.36
	Miles per rider	254	290	271

Very Low Low Comparable High Very High

Student and teacher information

Measure	District	Peer average	State average
Attendance rate	95%	96%	95%
Graduation rate (2008)	86%	85%	75%
Poverty rate	18%	13%	19%
Student/teacher ratio	14.3	17.3	17.1
Average teacher salary	\$47,298	\$45,833	\$45,209
Average years' experience	11.8	9.1	8.3
Percent of teachers in first 3 years	14%	27%	16%

Proposition 301

Teacher pay

On average, each teacher earned \$5,126 in additional salary, and each librarian, speech pathologist, counselor, audiologist, nurse, psychologist, technology teacher, aide, and therapist earned between \$362 and \$8,170.

Performance pay plan goals and results

Type of goal	Goal met?
Student achievement	■
Dropout/ graduation rates	
Student attendance	
Parent/student satisfaction	
Teacher attendance	
Teacher professional development	
Teacher evaluations	
Tutoring	
Other	■

■ = yes, □ = no, and ▮ = partially

Per-pupil spending by function

	District		Peer	State	National
	2008	2009	2009	2009	2007
Total	\$8,055	\$8,589	\$7,523	\$7,908	\$9,683
Classroom dollars	\$4,629	\$5,022	\$4,247	\$4,497	\$5,903
Nonclassroom dollars:	\$3,426	\$3,567	\$3,276	\$3,411	\$3,780
Administration	634	652	634	729	1,050
Plant Operations	993	1,052	936	920	951
Food Service	307	326	310	382	369
Transportation	409	398	359	343	406
Student Support	551	578	571	594	512
Instruction Support	509	535	443	431	470
Other	23	26	23	12	22