

Antelope Union High School District

Yuma County

Efficiency peer groups 6 and T-12, Achievement peer group 11

Legislative district(s): 4 and 13

District size / location:

Small, Rural

Students attending:

291

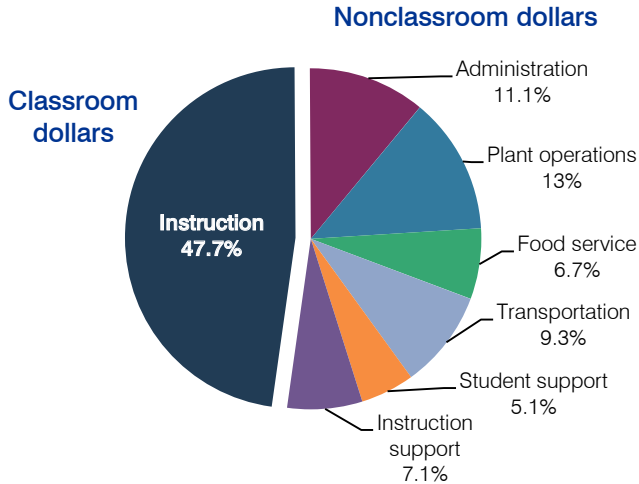
Number of schools:

1

OPERATIONAL EFFICIENCY

STUDENT ACHIEVEMENT, TEACHER MEASURES, AND FINANCIAL ASSESSMENT

Spending by operational area



5-year spending trend

Total spending per pupil increased by 7 percent. Spending in the classroom varied year to year, increasing overall from 43.7 to 47.7 percent. Spending on administration decreased substantially and spending on transportation, food service, student support, and instruction support increased substantially. Spending on plant operations increased slightly.

Cost measures relative to peer averages

Operational area	Measure	District	Peer average	State average
Administration	Cost per pupil	\$1,176	\$1,487	\$736
	Students per administrator	61	43	66
Plant operations	Cost per square foot	\$3.66	\$5.04	\$6.09
	Square footage per student	375	299	152
Food service	Cost per meal equivalent	\$4.05	\$3.19	\$2.47
Transportation	Cost per mile	\$1.45	\$2.02	\$3.50
	Cost per rider	\$995	\$1,181	\$982

Very low Low Comparable High Very high

Per-pupil spending by operational area

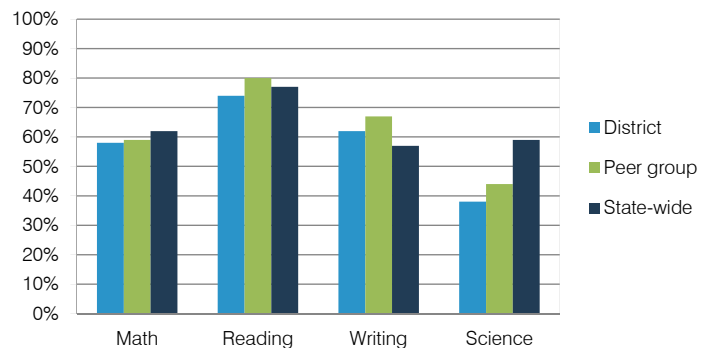
	District		Peer average	State average	National average
	2011	2012	2012	2012	2010
Total	\$9,962	\$10,602	\$9,872	\$7,475	\$10,652
Classroom dollars	5,047	5,056	4,866	4,053	6,526
Nonclassroom dollars:	4,915	5,546	5,006	3,422	4,126
Administration	1,051	1,176	1,487	736	1,139
Plant operations	1,222	1,376	1,438	928	1,012
Food service	582	707	454	382	405
Transportation	797	988	510	362	443
Student support	627	538	636	578	592
Instruction support	636	761	481	436	535

ADE-reported district and school letter grades

District grade: **C**

Grade	Number of schools	Percentage of schools
A	0	0%
B	0	0%
C	1	100%
D	0	0%
F	0	0%
Not rated	0	0%

Percentage of students who met state standards (AIMS)



Student and teacher measures

Measure	District	Peer average	State average
Attendance rate	95%	94%	94%
Graduation rate (2011)	79%	86%	78%
Poverty rate (2011)	19%	22%	25%
Students per teacher	15.2	14.0	18.1
Average teacher salary	\$45,770	\$39,650	\$45,193
Amount from Proposition 301	\$3,002	\$3,669	\$3,195
Average years of teacher experience	15.3	10.6	11.0
Percentage of teachers in first 3 years	11%	31%	16%

Financial stress assessment

Overall financial stress level: **Low**

Measure: 2010 through 2012	Assessment
Number of students attending	Moderate decrease
Spending exceeded operating/capital budgets	No overspending
Spending increase election results	No election held
Operating reserve percentage (max. 4%), trend	3.9%, Steady
Years of capital reserve held	1 to 3 years
Current financial and internal control status	Compliant

Stress level: **Low** Moderate High