

# Antelope Union High School District

Yuma County

Efficiency peer groups 6 and T-10, Achievement peer group 10

Legislative district(s): 4 and 13

District size, location:

Small, Rural

Students attending:

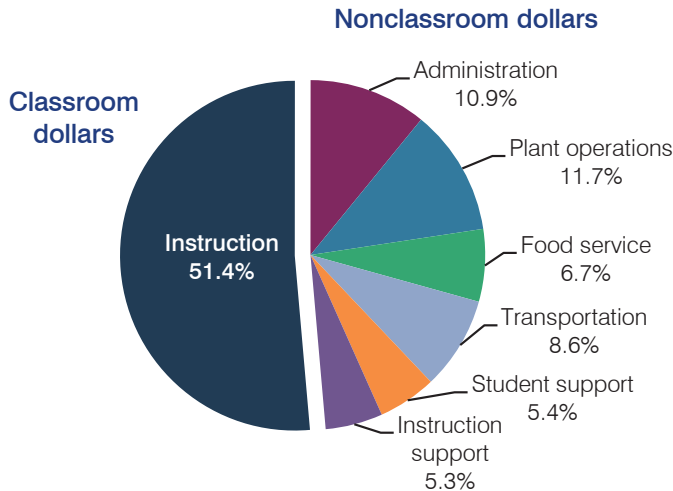
283

Number of schools:

1

## OPERATIONAL EFFICIENCY

### Spending by operational area



### 5-year spending trend

Total spending per pupil increased by 19 percent. Spending in the classroom decreased from 53.4 to 51.4 percent. Spending on administration decreased substantially and spending on student support and instruction support increased substantially. Spending on food service increased, while spending on other nonclassroom areas varied year to year.

### Cost measures relative to peer averages

Operational area	Measure	District	Peer average	State average
Administration	Cost per pupil	\$1,156	\$1,571	\$746
	Students per administrator	57	43	67
Plant operations	Cost per square foot	\$3.19	\$4.94	\$6.03
	Square footage per student	386	318	153
Food service	Cost per meal equivalent	\$4.16	\$3.28	\$2.58
Transportation	Cost per mile	\$1.29	\$1.97	\$3.55
	Cost per rider	\$877	\$1,010	\$1,015

Very low   Low   Comparable   High   Very high

### Per pupil spending by operational area

	District		Peer average 2013	State average 2013	National average 2011
	2012	2013			
<b>Total</b>	<b>\$10,602</b>	<b>\$10,579</b>	<b>\$10,188</b>	<b>\$7,496</b>	<b>\$10,658</b>
<b>Classroom dollars</b>	<b>5,056</b>	<b>5,442</b>	<b>4,979</b>	<b>4,031</b>	<b>6,520</b>
<b>Nonclassroom dollars:</b>	<b>5,546</b>	<b>5,137</b>	<b>5,209</b>	<b>3,465</b>	<b>4,138</b>
Administration	1,176	1,156	1,571	746	1,138
Plant operations	1,376	1,233	1,558	924	1,015
Food service	707	708	463	396	412
Transportation	988	905	509	369	452
Student support	538	576	647	582	593
Instruction support	761	559	461	448	528

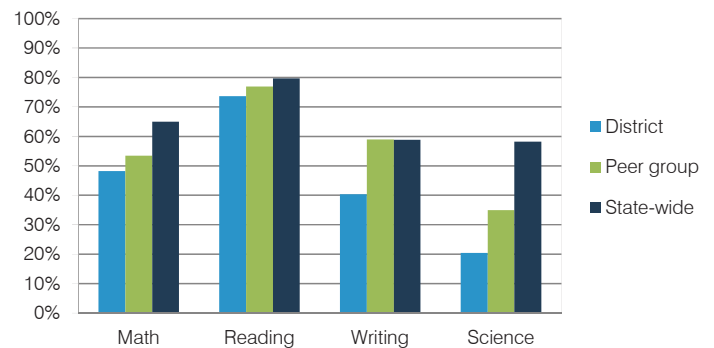
## STUDENT ACHIEVEMENT, TEACHER MEASURES, AND FINANCIAL ASSESSMENT

### ADE-reported district and school letter grades

District grade: **C**

Grade	Number of schools	Percentage of schools
A	0	0%
B	0	0%
C	1	100%
D	0	0%
F	0	0%
Not rated	0	0%

### Students who met state standards (AIMS)



### Student and teacher measures

Measure	District	Peer average	State average
Attendance rate	94%	93%	94%
Graduation rate (2012)	74%	74%	77%
Poverty rate (2012)	28%	25%	25%
Students per teacher	16.2	16.6	18.3
Average teacher salary	\$51,992	\$44,454	\$45,264
Amount from Proposition 301	\$4,970	\$5,749	\$3,784
Average years of teacher experience	13.9	11.4	10.9
Percentage of teachers in first 3 years	7%	21%	19%

### Financial stress assessment

Overall financial stress level: **Low**

Measure: 2011 through 2013

Assessment

Number of students attending district	Moderate decrease
Spending exceeded operating/capital budgets	No overspending
Spending increase election results	No election held
Operating reserve percentage (max. 4%), trend	3.6%, Decreasing
Years of capital reserve held	1 to 3 years
Current financial and internal control status	Compliant

Stress level

