

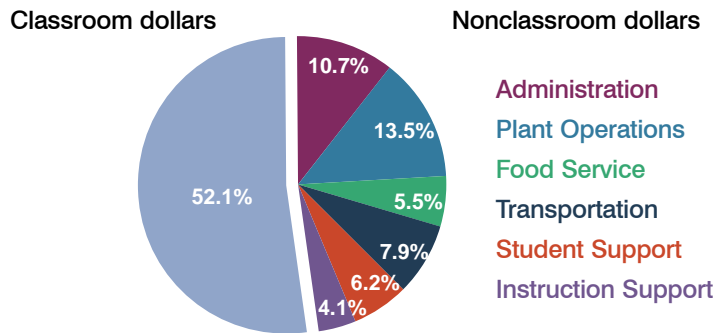
Antelope Union High School District

Yuma County
Peer groups: Efficiency 6, Achievement 12
Legislative district(s): 24

District size: Small
Students attending: 321
Number of schools: 1

OPERATIONAL EFFICIENCY

Spending by function



5-year trend

Total spending per pupil increased by 12 percent. Spending in the classroom varied year to year, decreasing overall from 53.7 to 52.1 percent. Spending on student and instruction support increased significantly, while spending in other nonclassroom areas varied year to year.

District's cost measures relative to peer group

Operational Area	Measure	District	Peer Average	State Average
Administration	Cost per pupil	\$967	\$1,447	\$721
	Students per administrator	66	42	66
Plant Operations	Cost per square foot	\$3.58	\$5.76	\$6.25
	Square footage per student	341	276	146
Food Service	Cost per meal equivalent	\$2.89	\$3.00	\$2.41
Transportation	Cost per mile	\$1.66	\$2.53	\$3.35
	Miles per rider	408	375	282

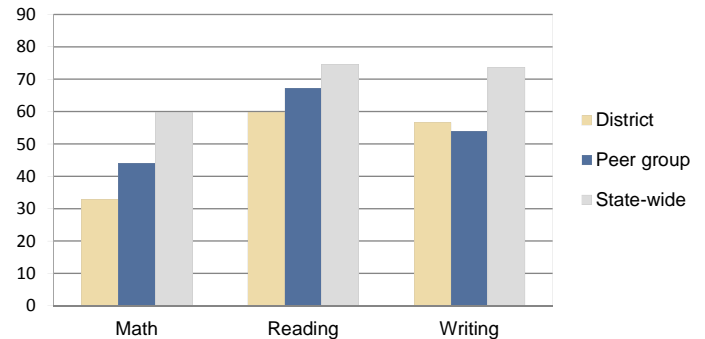
Very low Low Comparable High Very high

Per-pupil spending by function

	District		Peer	State	National
	2009	2010	2010	2010	2008
Total	\$9,656	\$9,036	\$9,887	\$7,609	\$10,297
Classroom dollars	\$5,017	\$4,710	\$5,054	\$4,253	\$6,262
Nonclassroom dollars:	\$4,639	\$4,326	\$4,833	\$3,356	\$4,035
Administration	993	967	1,447	721	1,109
Plant Operations	1,220	1,219	1,462	914	1,003
Food Service	524	495	424	366	390
Transportation	690	720	445	342	438
Student Support	587	558	625	581	556
Instruction Support	625	367	430	432	539

STUDENT ACHIEVEMENT AND TEACHER INFORMATION

Percentage of students meeting state standards (AIMS)



Adequate Yearly Progress (AYP) toward federal goals

The District's school did not meet all applicable AYP objectives for NCLB because some of its students did not demonstrate sufficient academic progress.

Student and teacher information

Measure	District	Peer Average	State Average
Attendance rate	94%	93%	94%
Graduation rate (2009)	77%	73%	76%
Poverty rate (2009)	25%	30%	21%
Student/teacher ratio	17.6	16.1	17.9
Average teacher salary	\$47,781	\$41,651	\$47,077
Average years' experience	15.2	12.3	10.6
Percent of teachers in first 3 years	6%	22%	20%

Proposition 301

Teacher and other staff pay

On average, each teacher earned \$6,540 in additional pay, and each counselor earned \$6,420.

Performance pay plan goals and results

Type of goal	Goal met?
Student achievement	■
Dropout/graduation rates	■
Student attendance	-
Parent/student satisfaction	■
Teacher attendance	-
Teacher professional development	■
Teacher evaluations	-
Tutoring	-
Other	-

■ = yes, □ = no, ▲ = partially, and - = no goal set