

# Antelope Union High School District

Yuma County  
Operational peer group: F  
Legislative districts: 24

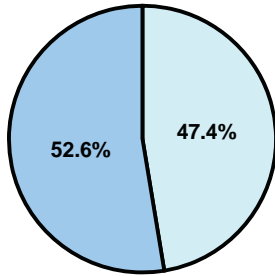
District size: Small  
Students attending: 338  
Number of schools: 1

## OPERATIONAL EFFICIENCY

### Average per-pupil spending

District  
State

**Classroom**  
**\$5,095**  
\$4,497



**Nonclassroom**  
**\$4,599**  
\$3,411

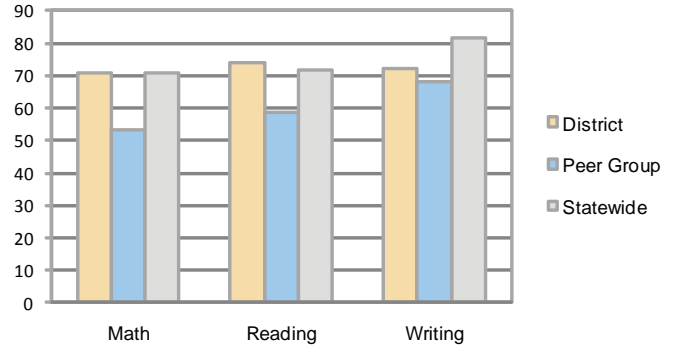
**Total**  
**\$9,694**  
\$7,908

### 5-year trend

Total spending per pupil increased by 21 percent. Spending in the classroom varied year to year and decreased overall from 54.1 to 52.6 percent. Spending on student and instruction support increased significantly, while spending in other nonclassroom areas varied year to year.

## STUDENT ACHIEVEMENT AND TEACHER INFORMATION

### Percentage of students meeting state standards (AIMS)



### Adequate Yearly Progress (AYP) toward federal goals

The District's school met all applicable AYP objectives for NCLB.

### District's cost measures relative to peer group

Operational Area	Measure	District	Peer Average	State Average
Administration	Cost per pupil	\$1,044	\$1,524	\$729
	Students per administrator	68	42	66
Plant Operations	Cost per square foot	\$3.81	\$5.78	\$6.40
	Square footage per student	318	284	144
Food Service	Cost per meal equivalent	\$3.75	\$3.38	\$2.53
Transportation	Cost per mile	\$1.43	\$2.60	\$3.36
	Miles per rider	477	294	271

Very Low   Low   Comparable   High   Very High

### Student and teacher information

Measure	District	Peer average	State average
Attendance rate	95%	94%	95%
Graduation rate (2008)	72%	73%	75%
Poverty rate	30%	30%	19%
Student/teacher ratio	17.7	14.2	17.1
Average teacher salary	\$47,673	\$41,521	\$45,209
Average years' experience	12.9	10.8	8.3
Percent of teachers in first 3 years	19%	23%	16%

### Proposition 301

#### Teacher pay

On average, each teacher and counselor earned between \$6,163 and \$7,271 in additional salary.

#### Performance pay plan goals and results

Type of goal	Goal met?
Student achievement	▲
Dropout/ graduation rates	▲
Student attendance	
Parent/student satisfaction	
Teacher attendance	
Teacher professional development	■
Teacher evaluations	
Tutoring	
Other	

■ = yes, □ = no, and ▲ = partially

### Per-pupil spending by function

	District		Peer 2009	State 2009	National 2007
	2008	2009			
<b>Total</b>	<b>\$8,903</b>	<b>\$9,694</b>	<b>\$10,596</b>	<b>\$7,908</b>	<b>\$9,683</b>
<b>Classroom dollars</b>	<b>\$4,752</b>	<b>\$5,095</b>	<b>\$5,393</b>	<b>\$4,497</b>	<b>\$5,903</b>
<b>Nonclassroom dollars:</b>	<b>\$4,151</b>	<b>\$4,599</b>	<b>\$5,203</b>	<b>\$3,411</b>	<b>\$3,780</b>
Administration	1,299	1,044	1,524	729	1,050
Plant Operations	1,071	1,212	1,549	920	951
Food Service	495	570	496	382	369
Transportation	815	690	552	343	406
Student Support	304	553	593	594	512
Instruction Support	167	525	481	431	470
Other	0	5	8	12	22