

Classroom Dollars and Proposition 301 Results

Apache Junction Unified School District

Pinal County

District size: Large
 Students attending: 5,695
 Number of schools: 9
 Number of certified teachers: 311

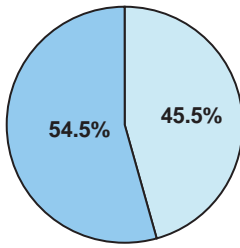
Classroom Dollars

Fiscal year 2006 averages per pupil

District

State

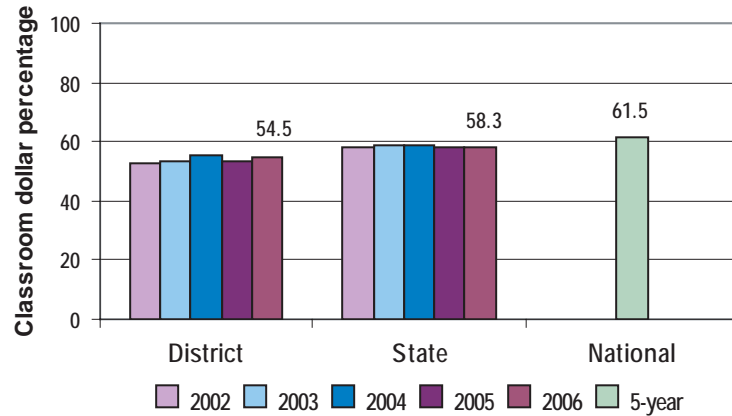
Classroom
 \$3,527
 \$3,981



Nonclassroom
 \$2,940
 \$2,852

Total
 \$6,467
 \$6,833

5-year comparison



Expenditures by function

	District					State 2006	National 5-year
	2002	2003	2004	2005	2006		
Classroom dollars	53.0	53.1	55.2	53.3	54.5	58.3	61.5
Nonclassroom dollars:							
Administration	10.2	9.3	8.8	9.6	9.3	9.4	11.0
Plant operations	13.9	14.9	14.0	14.2	13.2	11.2	9.6
Food service	3.9	3.8	4.0	3.9	4.0	4.7	3.9
Transportation	5.8	5.2	5.5	5.7	6.0	4.2	4.0
Student support	6.7	8.0	7.6	8.1	7.8	7.2	5.1
Instruction support	4.9	4.4	4.7	5.0	5.0	4.8	4.7
Other	1.6	1.3	0.2	0.2	0.2	0.2	0.2

Comparative Information

	District			State 2006
	2004	2005	2006	
Student/teacher ratio	18.1	18.0	18.3	17.7
Average teacher salary	\$37,360	\$36,990	\$37,736	\$42,967
Average years' experience	8.6	8.4	8.6	8.3

Classroom dollar ranking: 129 of 229 districts.

Proposition 301

District-reported 2006 results

Teacher pay

- On average, each teacher, librarian, speech pathologist, audiologist, and counselor earned between \$3,917 and \$4,456 in additional salary.

Performance

- The District accomplished its goals, which were the same as the prior fiscal year's goals and were based on district and school performance.
- Students at each school, on average, were required to demonstrate 1 year's academic progress in reading, math, and language arts, or the combined average of the 3 academic areas had to equal or exceed 1 year's academic progress.
- Another goal was linked to parent-student satisfaction.

Menu

- The District continued to use monies to employ 1 high school, 1 middle school, and 7 elementary school teachers to reduce class sizes.
- 50 new teachers attended up to 5 days of professional development activities prior to the start of the school year.
- All teachers were compensated for an additional 2 days of professional development.