

Apache Junction Unified School District

Pinal County
Operational peer group: C
Legislative districts: 22, 23

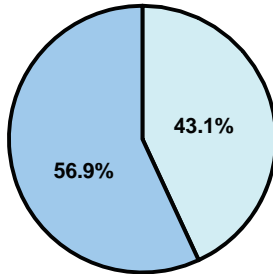
District size: Medium-Large
Students attending: 5,508
Number of schools: 9

OPERATIONAL EFFICIENCY

Average per-pupil spending

District
State

Classroom
\$4,539
\$4,497



Nonclassroom
\$3,437
\$3,411

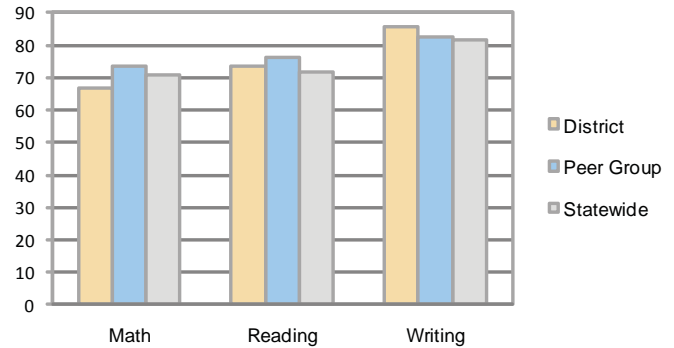
Total
\$7,976
\$7,908

5-year trend

Total spending per pupil increased by 27 percent. Spending in the classroom varied year to year and increased overall from 55.2 to 56.9 percent. Spending on plant operations decreased, while spending in other nonclassroom areas remained stable.

STUDENT ACHIEVEMENT AND TEACHER INFORMATION

Percentage of students meeting state standards (AIMS)



Adequate Yearly Progress (AYP) toward federal goals

6 schools met all applicable AYP objectives for NCLB. 3 did not because they failed to meet 1 or more of the following objectives: percentage of students tested (2); academic progress (2); attendance rate (1); graduation rate (1).

Student and teacher information

Measure	District	Peer average	State average
Attendance rate	95%	95%	95%
Graduation rate (2008)	64%	84%	75%
Poverty rate	14%	13%	19%
Student/teacher ratio	16.6	17.5	17.1
Average teacher salary	\$43,942	\$44,052	\$45,209
Average years' experience	10.0	8.4	8.3
Percent of teachers in first 3 years	29%	30%	16%

District's cost measures relative to peer group

Operational Area	Measure	District	Peer Average	State Average
Administration	Cost per pupil	\$708	\$733	\$729
	Students per administrator	58	63	66
Plant Operations	Cost per square foot	\$7.21	\$6.20	\$6.40
	Square footage per student	135	144	144
Food Service	Cost per meal equivalent	\$2.68	\$2.79	\$2.53
Transportation	Cost per mile	\$3.63	\$3.31	\$3.36
	Miles per rider	209	230	271

Very Low Low Comparable High Very High

Per-pupil spending by function

	District		Peer	State	National
	2008	2009	2009	2009	2007
Total	\$7,526	\$7,976	\$7,484	\$7,908	\$9,683
Classroom dollars	\$4,105	\$4,539	\$4,298	\$4,497	\$5,903
Nonclassroom dollars:	\$3,421	\$3,437	\$3,186	\$3,411	\$3,780
Administration	680	708	733	729	1,050
Plant Operations	999	974	869	920	951
Food Service	306	334	332	382	369
Transportation	471	447	400	343	406
Student Support	580	594	543	594	512
Instruction Support	371	366	295	431	470
Other	14	14	14	12	22

Proposition 301

Teacher pay

On average, each teacher earned an additional \$4,996 in salary, and each librarian, speech pathologist, and counselor earned between \$3,572 and \$6,684.

Performance pay plan goals and results

Type of goal	Goal met?
Student achievement	■
Dropout/ graduation rates	
Student attendance	
Parent/student satisfaction	■
Teacher attendance	
Teacher professional development	
Teacher evaluations	
Tutoring	
Other	

■ = yes, □ = no, and ▴ = partially