

Classroom Dollars and Proposition 301 Results

Apache Junction Unified School District

Pinal County

District size: Large
 Students attending: 5,783
 Number of schools: 9
 Number of certified teachers: 324

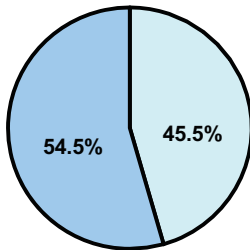
Classroom Dollars

Fiscal year 2008 averages per pupil

District

State

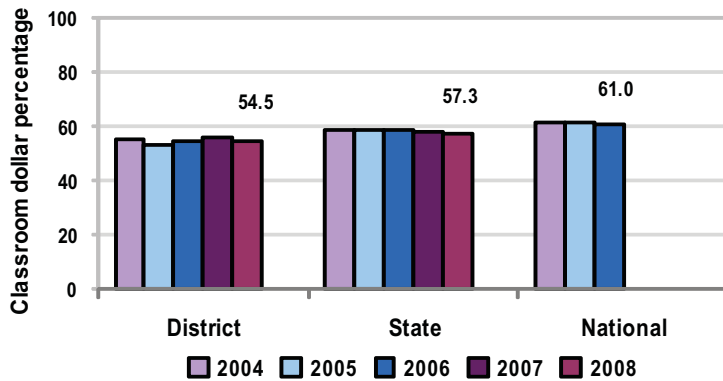
Classroom
 \$4,105
 \$4,480



Nonclassroom
 \$3,421
 \$3,333

Total
 \$7,526
 \$7,813

5-year comparison



Expenditures by function

	Percentage					State 2008	National 2006
	2004	2005	2006	2007	2008		
Classroom dollars	55.2	53.3	54.5	55.8	54.5	57.3	61.0
Nonclassroom dollars:							
Administration	8.8	9.6	9.3	9.3	9.0	9.2	10.8
Plant operations	14.0	14.2	13.2	13.1	13.3	11.3	9.9
Food service	4.0	3.9	4.0	3.8	4.1	4.8	3.8
Transportation	5.5	5.7	6.0	6.0	6.3	4.4	4.2
Student support	7.6	8.1	7.8	7.4	7.7	7.4	5.2
Instruction support	4.7	5.0	5.0	4.4	4.9	5.4	4.9
Other	0.2	0.2	0.2	0.2	0.2	0.2	0.2

Comparative Information

	District			State
	2006	2007	2008	2008
Student/teacher ratio	18.3	18.2	17.8	17.3
Average teacher salary	\$37,736	\$41,457	\$43,462	\$44,967
Average years' experience	8.6	8.5	8.2	8.1

Classroom dollar ranking: 128 of 230 districts.

Proposition 301

District-reported 2008 results

Teacher pay

- On average, each teacher earned an additional \$4,544 in salary, and each librarian, speech pathologist, counselor, and teacher on assignment earned between \$2,224 and \$4,916.

Performance

- The District accomplished most of its goals, which were the same as the prior fiscal year's goals and were based on district and school performance.
- Students, on average, were required to demonstrate 1 year's academic progress in reading, math, and language arts, or the combined average of the 3 academic areas had to equal or exceed 1 year's academic progress.
- Another goal was linked to parent-student satisfaction.

Menu

- Monies were used primarily to increase eligible employee compensation.
- The District continued to pay 1 high school, 1 middle school, and 7 elementary school teachers to reduce class sizes.
- 90 new teachers attended professional development activities prior to the start of the school year, and all teachers were compensated for an additional 2 days of professional development.