

# Classroom Dollars and Proposition 301 Results

## Apache Junction Unified School District

Pinal County

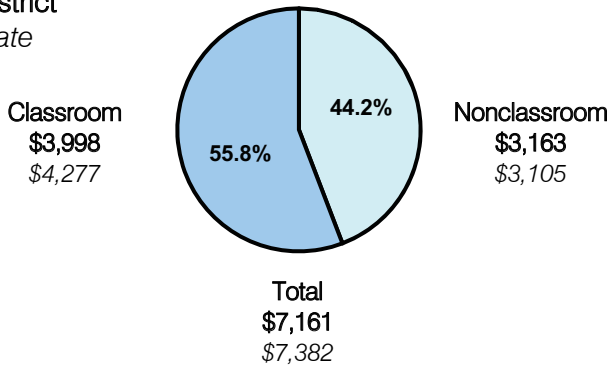
District size: Large  
 Students attending: 5,781  
 Number of schools: 9  
 Number of certified teachers: 317

### Classroom Dollars

Fiscal year 2007 averages per pupil

District

State

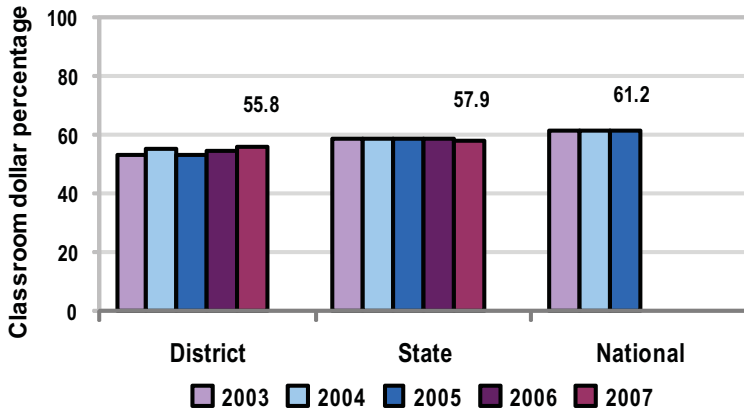


### Comparative Information

	District			State
	2005	2006	2007	2007
Student/teacher ratio	18.0	18.3	18.2	17.4
Average teacher salary	\$36,990	\$37,736	\$41,457	\$43,833
Average years' experience	8.4	8.6	8.5	8.1

Classroom dollar ranking: 98 of 229 districts.

### 5-year comparison



### Expenditures by function

	District					State	National
	2003	2004	2005	2006	2007	2007	2005
Classroom dollars	53.1	55.2	53.3	54.5	55.8	57.9	61.2
Nonclassroom dollars:							
Administration	9.3	8.8	9.6	9.3	9.3	9.5	11.0
Plant operations	14.9	14.0	14.2	13.2	13.1	11.3	9.6
Food service	3.8	4.0	3.9	4.0	3.8	4.7	3.9
Transportation	5.2	5.5	5.7	6.0	6.0	4.3	4.1
Student support	8.0	7.6	8.1	7.8	7.4	7.3	5.2
Instruction support	4.4	4.7	5.0	5.0	4.4	4.8	4.8
Other	1.3	0.2	0.2	0.2	0.2	0.2	0.2

### Proposition 301

#### District-reported 2007 results

##### Teacher pay

- On average, each teacher, librarian, speech pathologist, and counselor earned an additional \$4,372 in salary, and each teacher on assignment earned an additional \$2,434.

##### Performance

- The District accomplished its goals, which were the same as the prior fiscal year's goals and were based on district and school performance.
- Students at each school, on average, were required to demonstrate 1 year's academic progress in reading, math, and language arts, or the combined average of the 3 academic areas had to equal or exceed 1 year's academic progress.
- Another goal was linked to parent-student satisfaction.

##### Menu

- Monies were used primarily to increase eligible employee compensation.
- Monies were also used to employ 1 high school, 1 middle school, and 7 elementary school teachers to reduce class sizes.
- 65 new teachers attended up to 5 days of professional development activities prior to the start of the school year, and all teachers were compensated for an additional 2 days of professional development.