

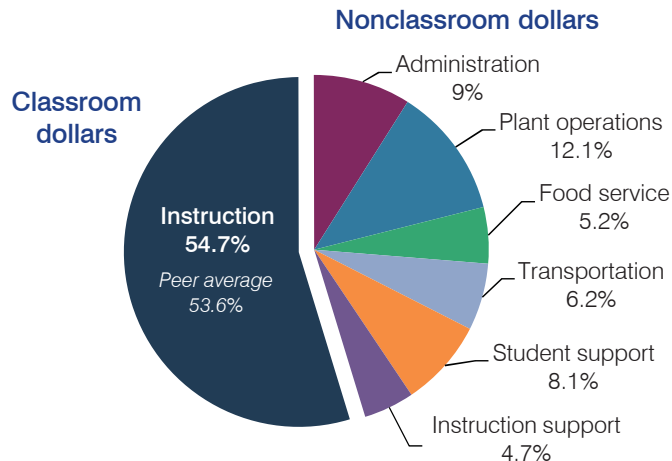
# Apache Junction Unified School District

Pinal County  
 Efficiency peer groups 3 and T-3, Achievement peer group 3  
 Legislative district(s): 8 and 16

District size, location: Medium-large, Suburb  
 Students attending: 4,356  
 Number of schools: 6

## OPERATIONAL EFFICIENCY

### Spending by operational area



### Efficiency measures relative to peer averages

Operational area	Measure	District	Peer average	State average
Administration	Cost per pupil	\$623	\$780	\$780
	Students per administrative position	62	68	67
Plant operations	Cost per square foot	\$5.61	\$5.87	\$6.09
	Square footage per student	148	160	153
Food service	Cost per meal equivalent	\$2.71	\$2.92	\$2.79
Transportation	Cost per mile	\$3.77	\$3.90	\$3.66
	Cost per rider	\$853	\$957	\$1,071

Very low   Low   Comparable   High   Very high

### Per pupil spending

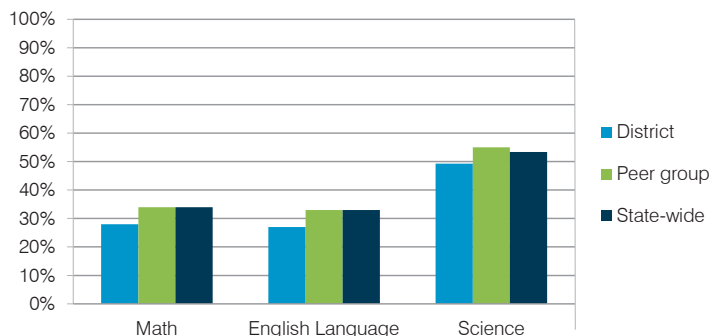
Spending by area	District		Peer average	State average
	2014	2015	2015	2015
Instruction	\$ 3,919	\$ 3,775	\$ 3,812	\$ 4,105
Administration	597	623	780	780
Plant operations	828	833	928	930
Food service	334	360	322	417
Transportation	390	431	412	371
Student support	558	555	553	613
Instruction support	383	325	304	442
<b>Total operational</b>	<b>\$ 7,009</b>	<b>\$ 6,902</b>	<b>\$ 7,111</b>	<b>\$ 7,658</b>
Land and buildings	\$ 7	\$ 7	\$ 676	\$ 641
Equipment	177	188	499	383
Interest	441	393	225	225
Other	111	110	145	150
<b>Total nonoperational</b>	<b>\$ 736</b>	<b>\$ 698</b>	<b>\$ 1,545</b>	<b>\$ 1,399</b>
<b>Total per pupil spending</b>	<b>\$ 7,745</b>	<b>\$ 7,600</b>	<b>\$ 8,656</b>	<b>\$ 9,057</b>

## STUDENT AND TEACHER MEASURES, FINANCIAL ASSESSMENT, AND REVENUE

### Student and teacher measures

Measure	District	Peer average	State average
Attendance rate	92%	94%	94%
Graduation rate (2014)	75%	81%	76%
Poverty rate (2014)	27%	22%	23%
Students per teacher	18.9	18.8	18.6
Average teacher salary	\$44,725	\$44,582	\$46,008
Average years of teacher experience	11.4	11.7	11.0
Percentage of teachers in first 3 years	18%	18%	20%

### Students who met state standards



### Financial stress assessment

Overall financial stress level: **Moderate**

Measure: 2013 through 2015	Assessment
Change in number of district students	Steady
Spending exceeded operating/capital budgets	No overspending
Spending increase election results	Voter-rejected
Operating reserve percentage (max. 4%), trend	0.4%, Steady
Years of capital reserve held	1 to 3 years
Current financial and internal control status	Compliant

Low   Moderate   High

### Per pupil revenues

Revenues by source	District		Peer average	State average
	2014	2015	2015	2015
Federal	\$ 1,201	\$ 1,098	\$ 771	\$ 1,299
State	2,808	2,830	2,873	3,517
Local	4,959	5,303	4,889	4,248
<b>Total revenues per pupil</b>	<b>\$ 8,968</b>	<b>\$ 9,231</b>	<b>\$ 8,533</b>	<b>\$ 9,064</b>
<b>Select revenues from common sources</b>				
Equalization formula funding	\$ 5,449	\$ 5,216	\$ 5,412	\$ 5,303
Grants	1,213	1,098	798	1,167
Donations and tax credits	105	111	127	78
<b>Select revenues from less common sources</b>				
Desegregation	\$ 0	\$ 0	1 of 15	
Small school adjustment	0	0	0 of 15	
Federal impact aid	0	0	3 of 15	
Voter-approved levy increases	1,438	1,485	14 of 15	

# Apache Junction USD—page 2

## Classroom dollar percentage

Year:	2001	2002	2003	2004	2005	2006	2007	2008	2009	2010	2011	2012	2013	2014	2015
Percentage:	53.8	53.0	53.1	55.2	53.3	54.5	55.8	54.5	56.9	55.0	55.1	54.6	55.6	55.9	54.7

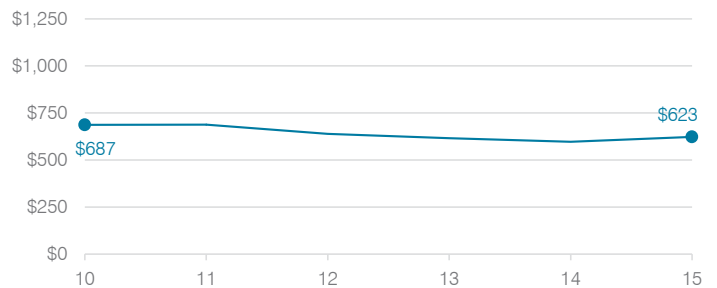
## OPERATIONAL TRENDS

Fiscal years as indicated

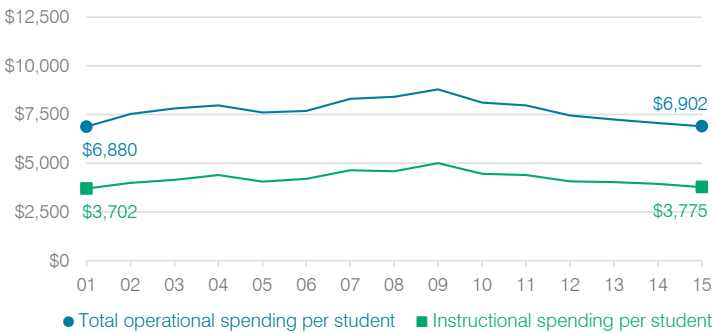
### 5-year spending trend (2010 through 2015)

Total operational spending per pupil, adjusted for inflation, decreased by 15 percent. The percentage of dollars spent in the classroom varied year to year, ranging overall from a high of 55.9 to a low of 54.6 percent. Overall, as a percentage of total operational spending, food service increased and student support increased slightly, while instruction support decreased slightly. Other nonclassroom areas remained fairly stable.

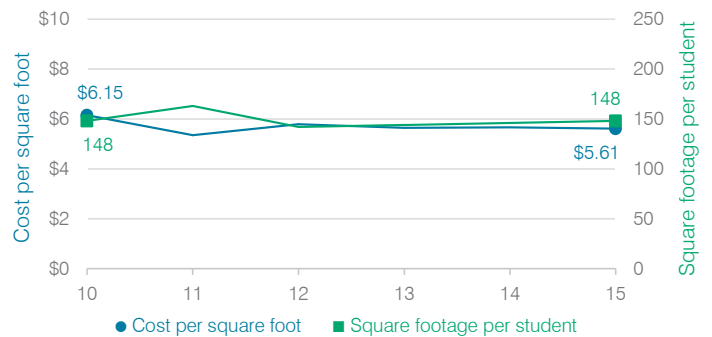
### Administrative cost per student



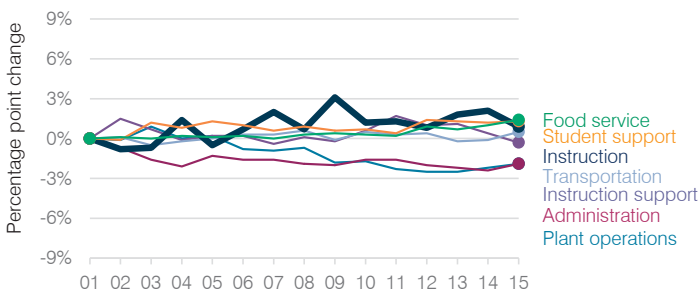
### Total operational and instructional spending per student (inflation adjusted to 2015 dollars)



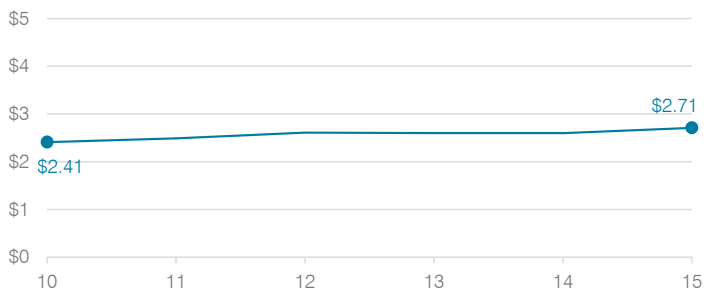
### Plant cost per square foot and square footage per student



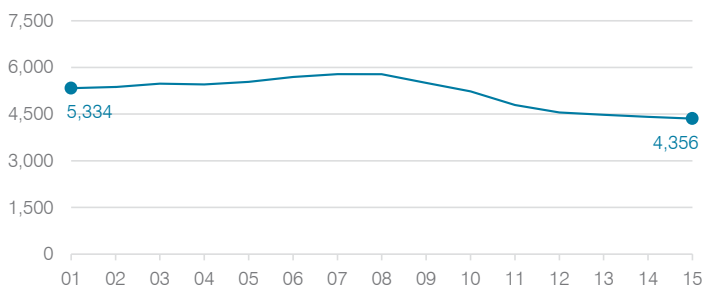
### Changes in operational spending percentages



### Food service cost per meal



### Students attending



### Transportation costs per mile and per rider

