

Classroom Dollars and Proposition 301 Results

Arlington Elementary School District

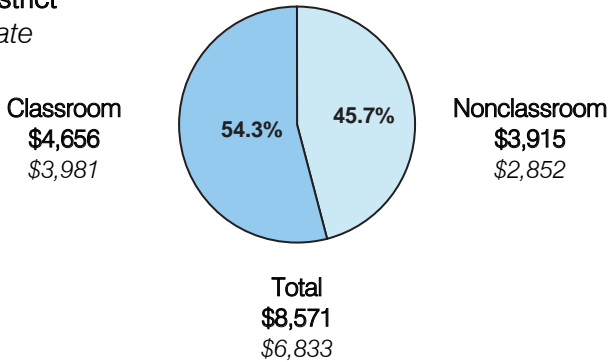
Maricopa County

District size: Small
 Students attending: 226
 Number of schools: 1
 Number of certified teachers: 12

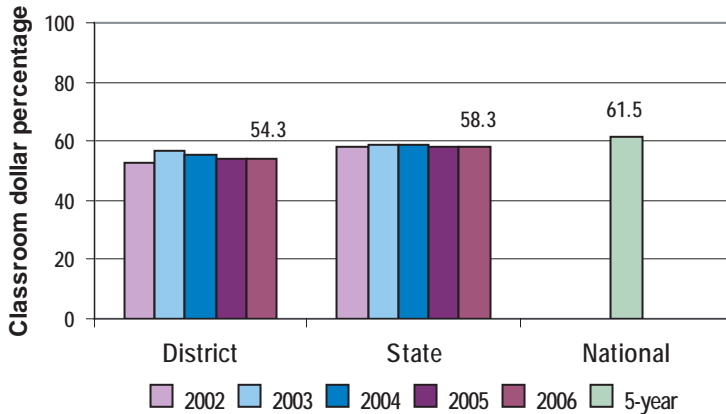
Classroom Dollars

Fiscal year 2006 averages per pupil

District
 State



5-year comparison



Expenditures by function

	District					State 2006	National 5-year
	2002	2003	2004	2005	2006		
Classroom dollars	52.9	56.5	55.1	54.2	54.3	58.3	61.5
Nonclassroom dollars:							
Administration	19.6	12.4	12.5	12.5	12.1	9.4	11.0
Plant operations	15.5	11.7	13.0	11.7	9.4	11.2	9.6
Food service	6.9	9.6	8.7	7.9	7.9	4.7	3.9
Transportation	3.8	6.4	6.5	7.3	9.4	4.2	4.0
Student support	1.1	2.7	4.1	6.3	6.6	7.2	5.1
Instruction support	0.2	0.7	0.1	0.1	0.1	4.8	4.7
Other					0.2	0.2	0.2

Comparative Information

	District			State 2006
	2004	2005	2006	
Student/teacher ratio	18.7	18.8	19.7	17.7
Average teacher salary	\$39,596	\$40,100	\$40,338	\$42,967
Average years' experience	8.1	7.4	7.5	8.3

Classroom dollar ranking: 133 of 229 districts.

Proposition 301

District-reported 2006 results

Teacher pay

- On average, each teacher earned an additional \$5,000 in salary.

Performance

- The District accomplished its goals, which were similar to the prior fiscal year's goals and were based on individual performance.
- Students' standardized test scores demonstrated at least 70 percent proficiency.
- The student attendance rate was at least 95 percent.
- Each teacher attended 8 hours of professional development activities and received satisfactory performance evaluations.
- The parents of each student visited the school.

Menu

- The District hired a one-half time equivalent teacher to help reduce 2nd-grade class sizes.
- Monies were also used to increase teacher compensation.