

# Arlington Elementary School District

Maricopa County

Efficiency peer groups 10 and T-10, Achievement peer group 20

Legislative district(s): 4 and 13

District size, location:

Small, Rural

Students attending:

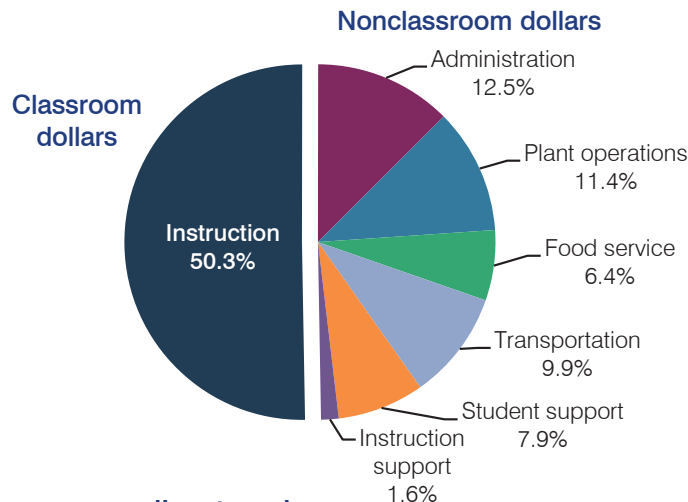
246

Number of schools:

1

## OPERATIONAL EFFICIENCY

### Spending by operational area



### 5-year spending trend

Total spending per pupil increased by 1 percent. Spending in the classroom decreased from 57.2 to 50.3 percent. Overall, spending on transportation and student support increased substantially and spending on instruction support increased. Spending on food service decreased slightly while spending on administration and plant operations varied year to year.

### Cost measures relative to peer averages

Operational area	Measure	District	Peer average	State average
Administration	Cost per pupil	\$1,264	\$1,130	\$746
	Students per administrator	90	55	67
Plant operations	Cost per square foot	\$7.76	\$6.14	\$6.03
	Square footage per student	149	157	153
Food service	Cost per meal equivalent	\$2.80	\$2.74	\$2.58
Transportation	Cost per mile	\$2.09	\$1.97	\$3.55
	Cost per rider	\$1,070	\$1,010	\$1,015

Very low   Low   Comparable   High   Very high

### Per pupil spending by operational area

	District		Peer average	State average	National average
	2012	2013	2013	2013	2011
<b>Total</b>	<b>\$9,633</b>	<b>\$10,127</b>	<b>\$8,518</b>	<b>\$7,496</b>	<b>\$10,658</b>
<b>Classroom dollars</b>	<b>4,777</b>	<b>5,093</b>	<b>4,624</b>	<b>4,031</b>	<b>6,520</b>
<b>Nonclassroom dollars:</b>	<b>4,856</b>	<b>5,034</b>	<b>3,894</b>	<b>3,465</b>	<b>4,138</b>
Administration	1,091	1,264	1,130	746	1,138
Plant operations	1,238	1,154	976	924	1,015
Food service	636	651	511	396	412
Transportation	954	999	537	369	452
Student support	800	799	499	582	593
Instruction support	137	167	241	448	528

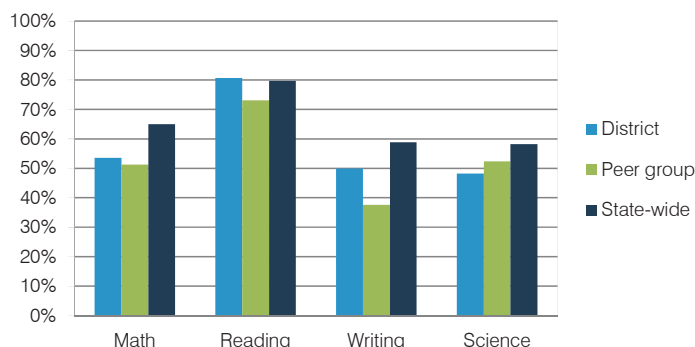
## STUDENT ACHIEVEMENT, TEACHER MEASURES, AND FINANCIAL ASSESSMENT

### ADE-reported district and school letter grades

District grade: **C**

Grade	Number of schools	Percentage of schools
A	0	0%
B	0	0%
C	1	100%
D	0	0%
F	0	0%
Not rated	0	0%

### Students who met state standards (AIMS)



### Student and teacher measures

Measure	District	Peer average	State average
Attendance rate	95%	94%	94%
Graduation rate (2012)	N/A	N/A	N/A
Poverty rate (2012)	38%	38%	25%
Students per teacher	18.2	15.1	18.3
Average teacher salary	\$52,671	\$44,190	\$45,264
Amount from Proposition 301	\$3,267	\$3,324	\$3,784
Average years of teacher experience	8.9	11.1	10.9
Percentage of teachers in first 3 years	7%	20%	19%

### Financial stress assessment

Overall financial stress level: **Low**

Measure: 2011 through 2013	Assessment
Number of students attending district	Steady
Spending exceeded operating/capital budgets	No overspending
Spending increase election results	Voter-approved
Operating reserve percentage (max. 4%), trend	2.3%, Varying
Years of capital reserve held	More than 3 years
Current financial and internal control status	Compliant

