

# Arlington Elementary School District

Maricopa County

Efficiency peer groups 10 and T-9, Achievement peer group 18

Legislative district(s): 4 and 13

District size, location:

Small, Rural

Students attending:

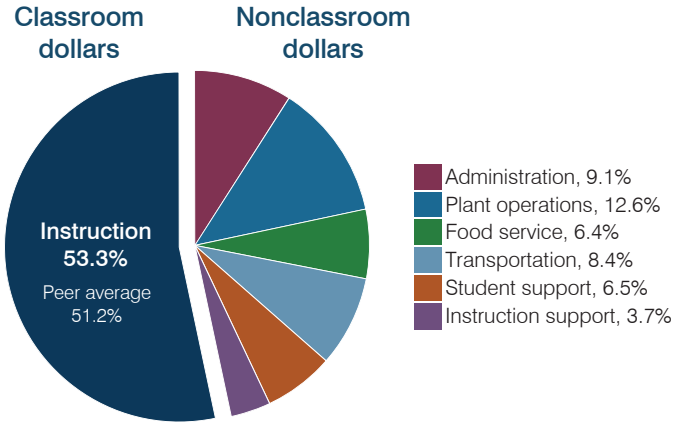
224

Number of schools:

1

## OPERATIONAL EFFICIENCY

### Spending by operational area



### Efficiency measures relative to peer averages

Operational area	Measure	District	Peer average	State average
Administration	Cost per pupil	\$1,072	\$1,226	\$806
	Students per administrative position	64	53	67
Plant operations	Cost per square foot	\$8.09	\$6.27	\$6.10
	Square footage per student	184	179	154
Food service	Cost per meal	\$3.97	\$3.29	\$2.81
Transportation	Cost per mile	\$1.93	\$2.49	\$3.72
	Cost per rider	\$913	\$1,031	\$1,092

Very low   Low   Comparable   High   Very high

### Per pupil spending

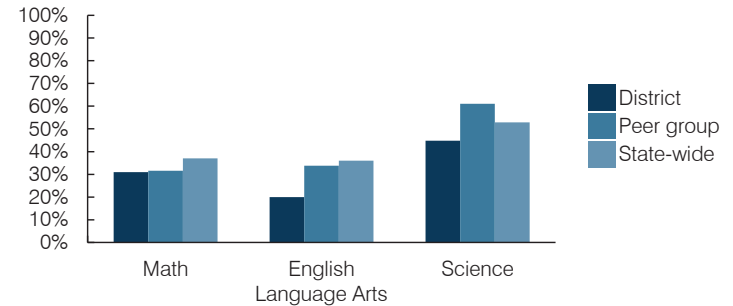
Spending by area	District		Peer average 2016	State average 2016
	2015	2016		
Instruction	\$ 5,596	\$ 6,276	\$ 4,828	\$ 4,145
Administration	1,053	1,072	1,226	806
Plant operations	1,227	1,486	1,140	939
Food service	714	756	580	415
Transportation	954	992	539	364
Student support	627	761	521	633
Instruction support	304	428	348	444
<b>Total operational</b>	<b>\$ 10,475</b>	<b>\$ 11,771</b>	<b>\$ 9,182</b>	<b>\$ 7,746</b>
Land and buildings	\$ 5,955	\$ 245	\$ 237	\$ 621
Equipment	328	613	321	400
Interest	238	148	161	216
Other	1	418	69	153
<b>Total nonoperational</b>	<b>\$ 6,522</b>	<b>\$ 1,424</b>	<b>\$ 788</b>	<b>\$ 1,390</b>
<b>Total per pupil spending</b>	<b>\$ 16,997</b>	<b>\$ 13,195</b>	<b>\$ 9,970</b>	<b>\$ 9,136</b>

## STUDENT AND TEACHER MEASURES, FINANCIAL ASSESSMENT, AND REVENUES

### Student and teacher measures

Measure	District	Peer average	State average
Attendance rate (2015)	93%	94%	94%
Graduation rate (2015)	N/A	N/A	N/A
Poverty rate (2015)	24%	25%	23%
Students per teacher	18.7	13.9	18.6
Average teacher salary	\$60,166	\$46,579	\$46,384
Amount from Proposition 301	\$7,400	\$4,701	\$5,315
Average years of teacher experience	12.9	12.1	11.0
Percentage of teachers in first 3 years	0%	14%	20%

### Students who passed state assessments



### Financial stress assessment

Overall financial stress level: **Low**

Measure: 2014 through 2016

Assessment

Change in number of district students	Moderate decrease
Spending exceeded operating/capital budgets	No overspending
Spending increase election results	No election held
Operating reserve percentage, Trend	3.3%, Decreasing
Years of capital reserve held	More than 3 years
Current financial and internal control status	Compliant

Low	Moderate	High
-----	----------	------

### Per pupil revenues

Revenues by source	District		Peer average 2016	State average 2016
	2015	2016		
Federal	\$ 1,778	\$ 2,254	\$ 2,805	\$ 1,301
State	478	597	4,432	3,780
Local	10,971	12,433	4,597	4,268
<b>Total revenues per pupil</b>	<b>\$ 13,227</b>	<b>\$ 15,284</b>	<b>\$ 11,834</b>	<b>\$ 9,349</b>

### Select revenues from common sources

Equalization formula funding	\$ 6,982	\$ 7,853	\$ 6,808	\$ 5,471
Grants	2,016	2,465	1,923	1,182
Donations and tax credits	158	92	240	86

### Select revenues from less common sources

	Number of peers receiving		
Desegregation	\$ 0	\$ 0	0 of 14
Small school adjustment	0	0	1 of 14
Federal impact aid	0	0	4 of 14
Voter-approved levy increases	2,405	2,407	6 of 14

# Arlington ESD—page 2

## Classroom dollar percentage

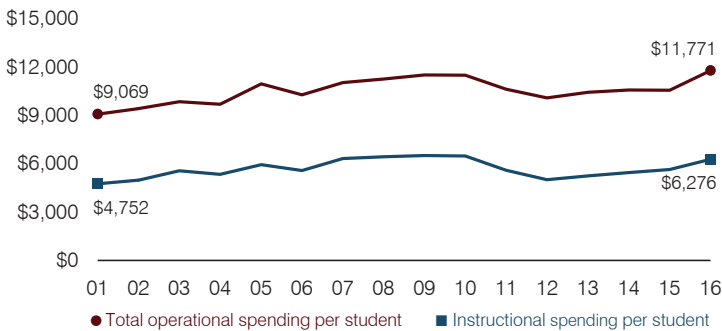
Year:	2001	2002	2003	2004	2005	2006	2007	2008	2009	2010	2011	2012	2013	2014	2015	2016
Percentage:	52.4	52.9	56.5	55.1	54.2	54.3	57.4	57.2	56.6	56.4	52.7	49.6	50.3	51.6	53.4	53.3

### OPERATIONAL TRENDS Fiscal years as indicated

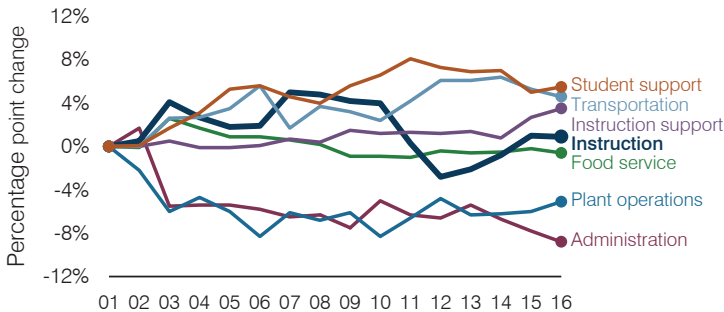
#### 5-year spending trend (2011 through 2016)

Total operational spending per pupil, adjusted for inflation, increased by 11 percent. The percentage of dollars spent in the classroom varied year to year, increasing overall from 52.7 to 53.3 percent. Overall, as a percentage of total operational spending, instruction support increased substantially and plant operations increased, while administration and student support decreased substantially.

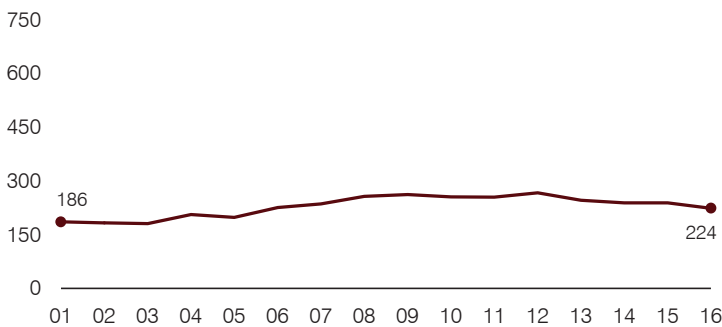
#### Total operational and instructional spending per pupil (inflation adjusted to 2016 dollars)



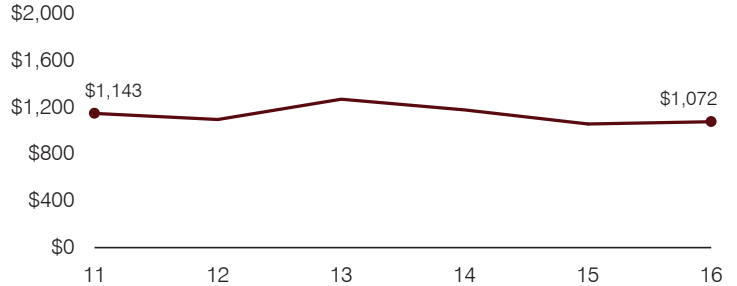
#### Changes in operational spending percentages



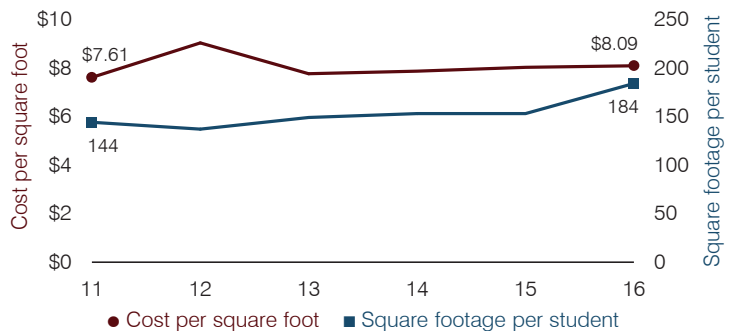
#### Students attending



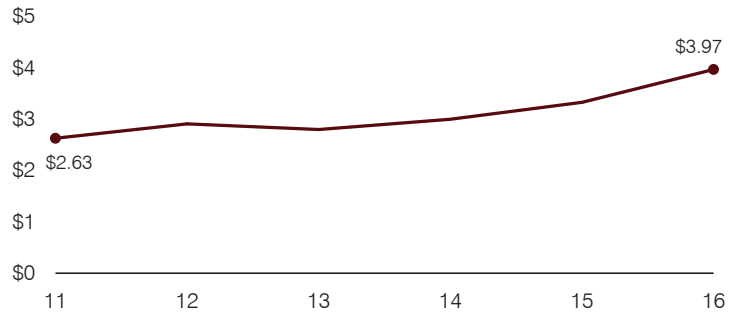
#### Administrative cost per pupil



#### Plant cost per square foot and square footage per student



#### Food service cost per meal



#### Transportation costs per mile and per rider

