

# Arlington Elementary School District

Maricopa County  
Operational peer group: K  
Legislative districts: 25

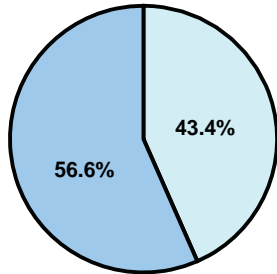
District size: Small  
Students attending: 262  
Number of schools: 1

## OPERATIONAL EFFICIENCY

### Average per-pupil spending

District  
State

Classroom  
**\$5,860**  
\$4,497



Nonclassroom  
**\$4,500**  
\$3,411

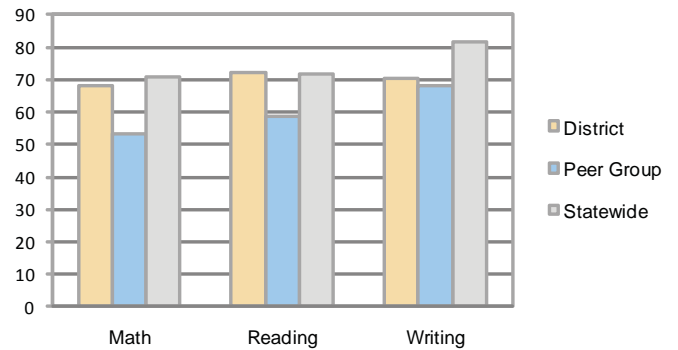
Total  
**\$10,360**  
\$7,908

### 5-year trend

Total spending per pupil increased by 37 percent. Spending in the classroom varied year to year and increased overall from 55.1 to 56.6 percent. Spending on administration and plant operations decreased significantly, while spending in other nonclassroom areas varied year to year.

## STUDENT ACHIEVEMENT AND TEACHER INFORMATION

### Percentage of students meeting state standards (AIMS)



### Adequate Yearly Progress (AYP) toward federal goals

The District's school met all applicable AYP objectives for NCLB.

### Student and teacher information

Measure	District	Peer average	State average
Attendance rate	94%	94%	95%
Graduation rate (2008)	N/A	73%	75%
Poverty rate	40%	30%	19%
Student/teacher ratio	15.4	14.2	17.1
Average teacher salary	\$47,854	\$41,521	\$45,209
Average years' experience	6.3	10.8	8.3
Percent of teachers in first 3 years	34%	23%	16%

### District's cost measures relative to peer group

Operational Area	Measure	District	Peer Average	State Average
Administration	Cost per pupil	\$1,076	\$1,288	\$729
	Students per administrator	NR	70	66
Plant Operations	Cost per square foot	\$8.61	\$6.94	\$6.40
	Square footage per student	140	149	144
Food Service	Cost per meal equivalent	\$2.72	\$3.05	\$2.53
Transportation	Cost per mile	\$1.56	\$2.22	\$3.36
	Miles per rider	507	268	271

Very Low    Low    Comparable    High    Very High

### Proposition 301

#### Teacher pay

On average, each teacher earned \$3,960 in additional salary.

#### Performance pay plan goals and results

Type of goal	Goal met?
Student achievement	■
Dropout/ graduation rates	■
Student attendance	■
Parent/student satisfaction	■
Teacher attendance	■
Teacher professional development	■
Teacher evaluations	■
Tutoring	■
Other	■

■ = yes, □ = no, and ▮ = partially

### Per-pupil spending by function

	District		Peer	State	National
	2008	2009	2009	2009	2007
<b>Total</b>	<b>\$9,994</b>	<b>\$10,360</b>	<b>\$9,786</b>	<b>\$7,908</b>	<b>\$9,683</b>
<b>Classroom dollars</b>	<b>\$5,719</b>	<b>\$5,860</b>	<b>\$5,344</b>	<b>\$4,497</b>	<b>\$5,903</b>
<b>Nonclassroom dollars:</b>	<b>\$4,275</b>	<b>\$4,500</b>	<b>\$4,442</b>	<b>\$3,411</b>	<b>\$3,780</b>
Administration	1,159	1,076	1,288	729	1,050
Plant Operations	1,080	1,204	1,162	920	951
Food Service	724	634	582	382	369
Transportation	754	725	512	343	406
Student Support	502	680	586	594	512
Instruction Support	51	173	311	431	470
Other	5	8	1	12	22