

Classroom Dollars and Proposition 301 Results

Arlington Elementary School District

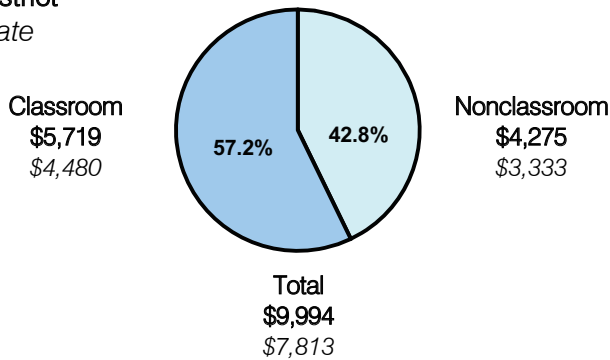
Maricopa County

District size: Small
 Students attending: 257
 Number of schools: 1
 Number of certified teachers: 16

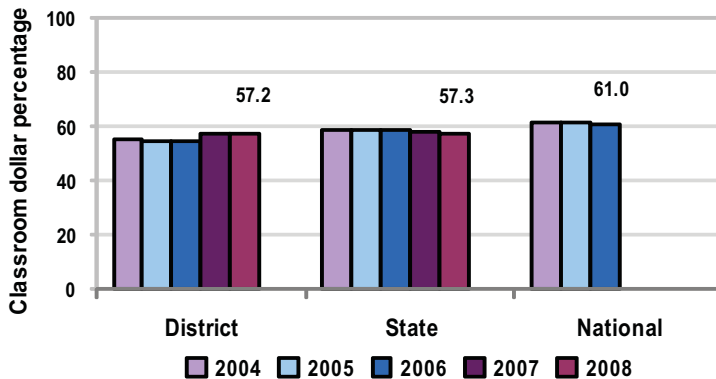
Classroom Dollars

Fiscal year 2008 averages per pupil

District
 State



5-year comparison



Expenditures by function

	District					State 2008	National 2006
	2004	2005	2006	2007	2008		
Classroom dollars	55.1	54.2	54.3	57.4	57.2	57.3	61.0
Nonclassroom dollars:							
Administration	12.5	12.5	12.1	11.4	11.6	9.2	10.8
Plant operations	13.0	11.7	9.4	11.6	10.9	11.3	9.9
Food service	8.7	7.9	7.9	7.6	7.2	4.8	3.8
Transportation	6.5	7.3	9.4	5.5	7.5	4.4	4.2
Student support	4.1	6.3	6.6	5.6	5.0	7.4	5.2
Instruction support	0.1	0.1	0.1	0.8	0.5	5.4	4.9
Other			0.2	0.1	0.1	0.2	0.2

Comparative Information

	District			State 2008
	2006	2007	2008	
Student/teacher ratio	19.7	18.9	16.1	17.3
Average teacher salary	\$40,338	\$42,348	\$43,486	\$44,967
Average years' experience	7.5	8.0	6.1	8.1

Classroom dollar ranking: 77 of 230 districts.

Proposition 301

District-reported 2008 results

Teacher pay

- On average, each teacher earned an additional \$5,121 in salary.

Performance

- The District accomplished its goals, which were the same as the prior fiscal year's goals and were based on district and school performance.
- The District met Adequate Yearly Progress objectives.
- 80 percent of students met all standards taught by teachers as demonstrated through test scores.
- The student attendance rate was at least 94 percent.
- Each teacher attended 8 hours of professional development activities and received satisfactory performance evaluations.
- Parent satisfaction surveys showed at least a 70 percent approval rating.

Menu

- The District continued to pay a 1st-grade teacher to help reduce class size.
- Monies were also used to increase teacher compensation.