

Arlington Elementary School District

Maricopa County

Efficiency peer groups 10 and T-9, Achievement peer group 19

Legislative district(s): 4 and 13

District size, location:

Small, Rural

Students attending:

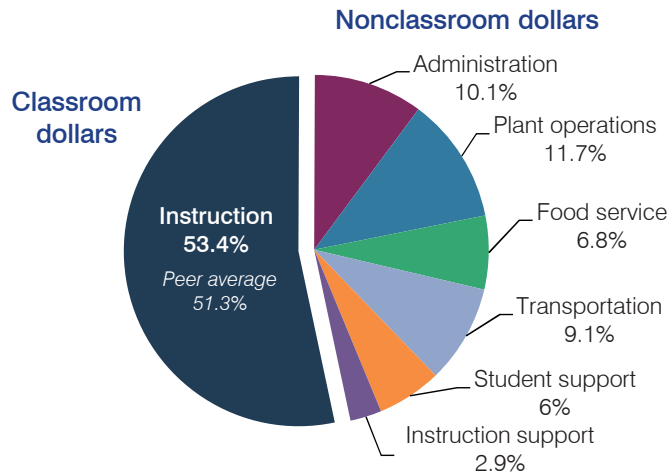
239

Number of schools:

1

OPERATIONAL EFFICIENCY

Spending by operational area



Efficiency measures relative to peer averages

Operational area	Measure	District	Peer average	State average
Administration	Cost per pupil	\$1,053	\$1,214	\$780
	Students per administrative position	96	57	67
Plant operations	Cost per square foot	\$8.03	\$6.49	\$6.09
	Square footage per student	153	181	153
Food service	Cost per meal equivalent	\$3.33	\$3.15	\$2.79
Transportation	Cost per mile	\$1.92	\$2.13	\$3.66
	Cost per rider	\$956	\$958	\$1,071

Very low Low Comparable High Very high

Per pupil spending

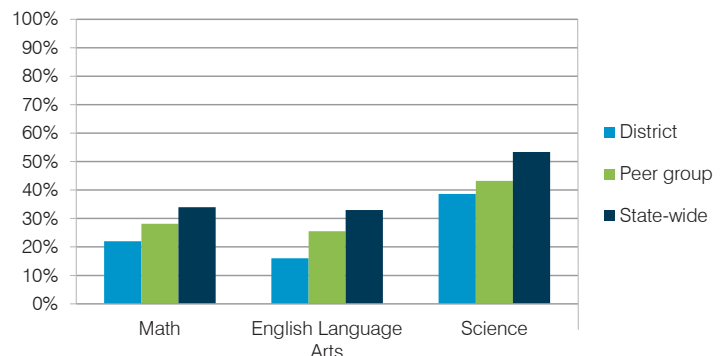
Spending by area	District		Peer average	State average
	2014	2015	2015	2015
Instruction	\$ 5,374	\$ 5,596	\$ 4,673	\$ 4,105
Administration	1,173	1,053	1,214	780
Plant operations	1,203	1,227	1,094	930
Food service	674	714	571	417
Transportation	1,064	954	541	371
Student support	831	627	489	613
Instruction support	102	304	283	442
Total operational	\$ 10,421	\$ 10,475	\$ 8,865	\$ 7,658
Land and buildings	\$ 948	\$ 5,955	\$ 778	\$ 641
Equipment	2,449	328	319	383
Interest	527	238	211	225
Other	4	1	53	150
Total nonoperational	\$ 3,928	\$ 6,522	\$ 1,361	\$ 1,399
Total per pupil spending	\$ 14,349	\$ 16,997	\$ 10,226	\$ 9,057

STUDENT AND TEACHER MEASURES, FINANCIAL ASSESSMENT, AND REVENUE

Student and teacher measures

Measure	District	Peer average	State average
Attendance rate	93%	94%	94%
Graduation rate (2014)	N/A	N/A	N/A
Poverty rate (2014)	31%	31%	23%
Students per teacher	19.2	12.9	18.6
Average teacher salary	\$57,943	\$43,855	\$46,008
Average years of teacher experience	10.8	12.6	11.0
Percentage of teachers in first 3 years	0%	9%	20%

Students who met state standards



Financial stress assessment

Overall financial stress level: **Low**

Measure: 2013 through 2015

Assessment

Change in number of district students	Steady
Spending exceeded operating/capital budgets	No overspending
Spending increase election results	Voter-approved
Operating reserve percentage (max. 4%), trend	3.8%, Decreasing
Years of capital reserve held	More than 3 years
Current financial and internal control status	Compliant

Low Moderate High

Per pupil revenues

Revenues by source	District		Peer average	State average
	2014	2015	2015	2015
Federal	\$ 1,831	\$ 1,778	\$ 3,069	\$ 1,299
State	490	478	3,876	3,517
Local	9,400	10,971	4,375	4,248
Total revenues per pupil	\$11,721	\$13,227	\$11,320	\$ 9,064
Select revenues from common sources				
Equalization formula funding	\$ 7,368	\$ 6,982	\$ 6,395	\$ 5,303
Grants	1,831	2,016	2,153	1,167
Donations and tax credits	177	158	205	78
Select revenues from less common sources				
Number of peers receiving				
Desegregation	\$ 0	\$ 0	0 of 13	
Small school adjustment	0	0	1 of 13	
Federal impact aid	0	0	4 of 13	
Voter-approved levy increases	2,233	2,405	8 of 13	

Arlington ESD—page 2

Classroom dollar percentage

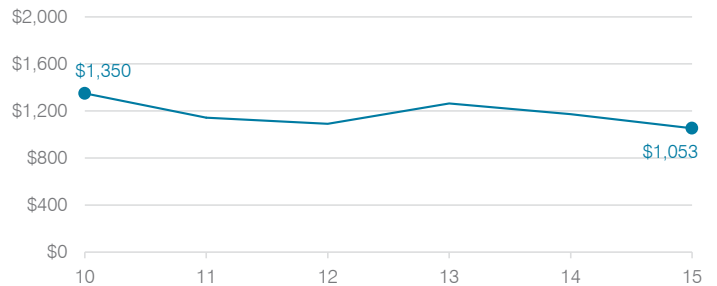
Year:	2001	2002	2003	2004	2005	2006	2007	2008	2009	2010	2011	2012	2013	2014	2015
Percentage:	52.4	52.9	56.5	55.1	54.2	54.3	57.4	57.2	56.6	56.4	52.7	49.6	50.3	51.6	53.4

OPERATIONAL TRENDS Fiscal years as indicated

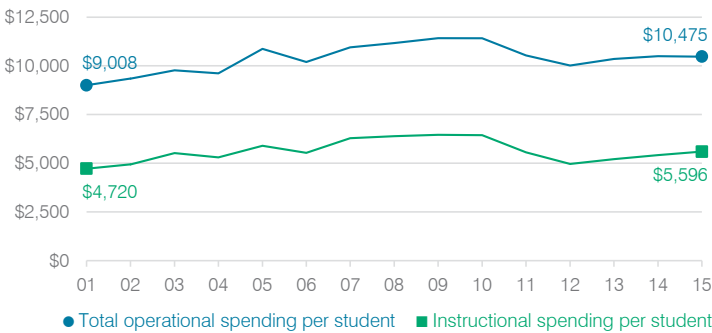
5-year spending trend (2010 through 2015)

Total operational spending per pupil, adjusted for inflation, decreased by 8 percent. The percentage of dollars spent in the classroom varied year to year, decreasing overall from 56.4 to 53.4 percent. Overall, as a percentage of total operational spending, plant operations and transportation increased substantially, instruction support increased, and food service increased slightly, while administration decreased substantially.

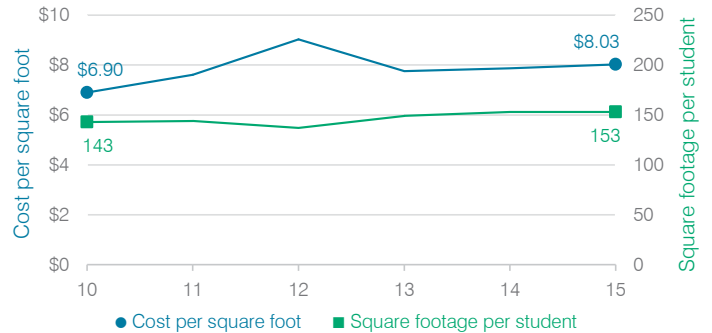
Administrative cost per student



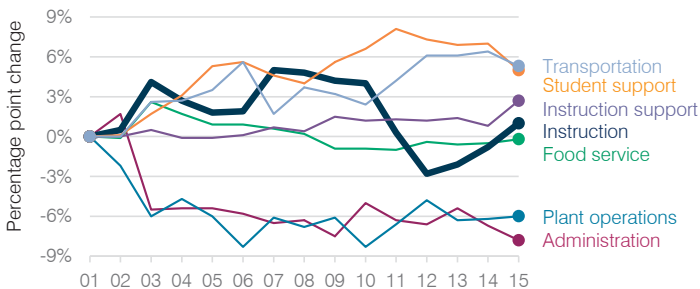
Total operational and instructional spending per student (inflation adjusted to 2015 dollars)



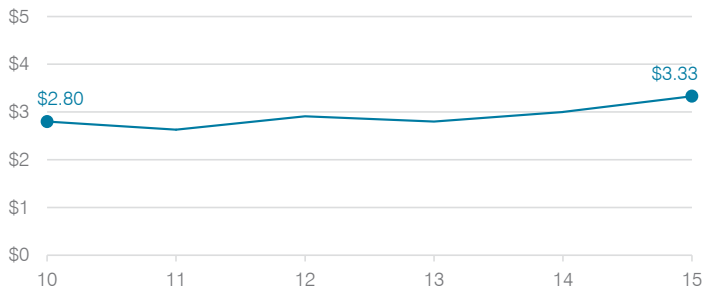
Plant cost per square foot and square footage per student



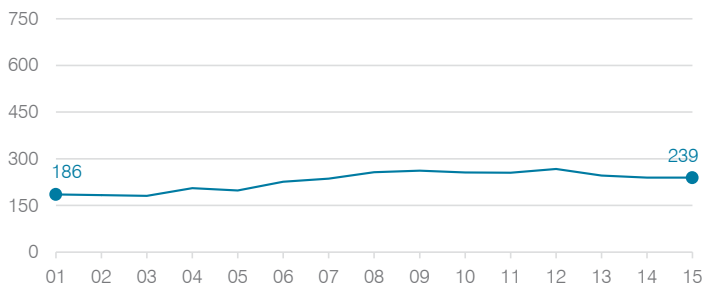
Changes in operational spending percentages



Food service cost per meal



Students attending



Transportation costs per mile and per rider

