

Ash Creek Elementary School District

Cochise County
Operational peer group: L
Legislative districts: 25

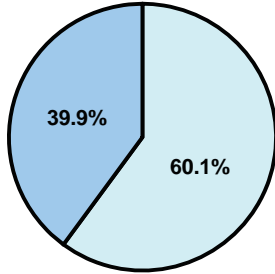
District size: Very Small
Students attending: 29
Number of schools: 1

OPERATIONAL EFFICIENCY

Average per-pupil spending

District
State

Classroom
\$10,517
\$4,497



Nonclassroom
\$15,849
\$3,411

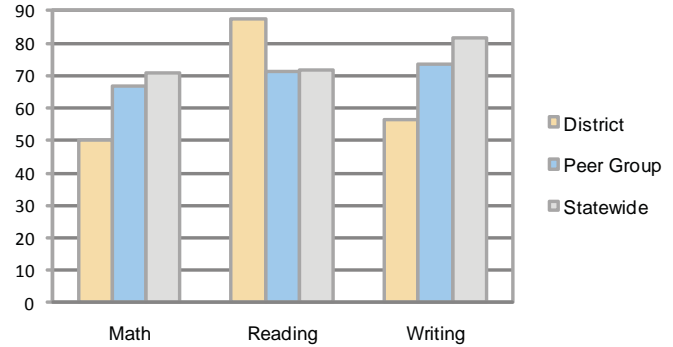
Total
\$26,366
\$7,908

5-year trend

Total spending per pupil increased by 36 percent. Spending in the classroom was very inconsistent year to year and decreased significantly overall from 47.4 to 39.9 percent. Spending on plant operations and food service increased significantly, while spending in other nonclassroom areas was very inconsistent year to year.

STUDENT ACHIEVEMENT AND TEACHER INFORMATION

Percentage of students meeting state standards (AIMS)



Adequate Yearly Progress (AYP) toward federal goals

The District's school met all applicable AYP objectives for NCLB.

Student and teacher information

Measure	District	Peer average	State average
Attendance rate	87%	94%	95%
Graduation rate (2008)	N/A	54%	75%
Poverty rate	30%	31%	19%
Student/teacher ratio	7.1	10.8	17.1
Average teacher salary	\$40,839	\$45,165	\$45,209
Average years' experience	8.8	12.7	8.3
Percent of teachers in first 3 years	27%	15%	16%

District's cost measures relative to peer group

Operational Area	Measure	District	Peer Average	State Average
Administration	Cost per pupil	\$6,233	\$2,656	\$729
	Students per administrator	8	32	66
Plant Operations	Cost per square foot	\$5.52	\$7.53	\$6.40
	Square footage per student	752	318	144
Food Service	Cost per meal equivalent	\$7.68	\$5.10	\$2.53
Transportation	Cost per mile	\$1.78	\$1.79	\$3.36
	Miles per rider	996	710	271

Very Low Low Comparable High Very High

Per-pupil spending by function

	District		Peer	State	National
	2008	2009	2009	2009	2007
Total	\$24,226	\$26,366	\$16,311	\$7,908	\$9,683
Classroom dollars	\$9,206	\$10,517	\$8,757	\$4,497	\$5,903
Nonclassroom dollars:	\$15,020	\$15,849	\$7,554	\$3,411	\$3,780
Administration	5,359	6,233	2,656	729	1,050
Plant Operations	4,890	4,153	2,297	920	951
Food Service	2,004	2,393	859	382	369
Transportation	1,947	1,745	930	343	406
Student Support	757	1,147	474	594	512
Instruction Support	63	178	338	431	470
Other	0	0	0	12	22

Proposition 301

Teacher pay

On average, each teacher earned \$2,869 in additional salary.

Performance pay plan goals and results

Type of goal	Goal met?
Student achievement	■
Dropout/ graduation rates	
Student attendance	
Parent/student satisfaction	■
Teacher attendance	
Teacher professional development	■
Teacher evaluations	
Tutoring	
Other	

■ = yes, □ = no, and ▴ = partially