

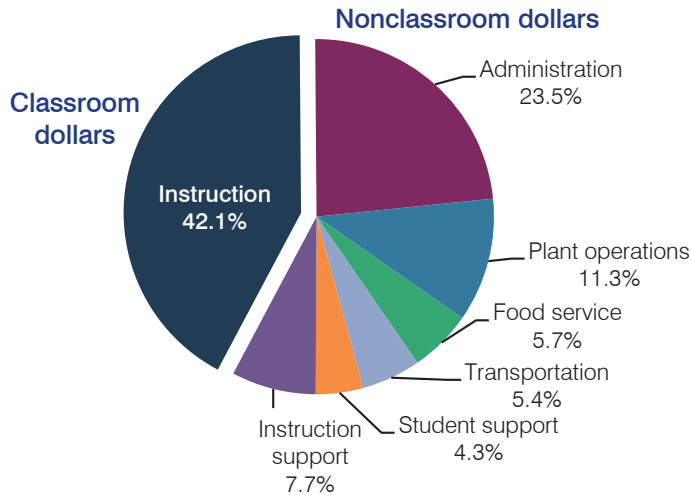
Ash Fork Joint Unified School District

Yavapai County
 Efficiency peer groups 6 and T-8, Achievement peer group 6
 Legislative district(s): 1

District size, location: Small, Rural
 Students attending: 215
 Number of schools: 1

OPERATIONAL EFFICIENCY

Spending by operational area



5-year spending trend

Student enrollment decreased by 28 percent, which contributed to the 34 percent increase in total spending per pupil. Spending in the classroom varied year to year, decreasing overall from 52.8 to 42.1 percent. Spending on administration and instruction support increased substantially. Spending on other nonclassroom areas varied year to year.

Cost measures relative to peer averages

Operational area	Measure	District	Peer average	State average
Administration	Cost per pupil	\$3,434	\$1,571	\$746
	Students per administrator	24	43	67
Plant operations	Cost per square foot	\$6.66	\$4.94	\$6.03
	Square footage per student	248	318	153
Food service	Cost per meal equivalent	\$4.57	\$3.28	\$2.58
Transportation	Cost per mile	NR	\$2.52	\$3.55
	Cost per rider	\$1,553	\$797	\$1,015

Very low Low Comparable High Very high

Per pupil spending by operational area

	District		Peer average	State average	National average
	2012	2013	2013	2013	2011
Total	\$11,927	\$14,593	\$10,188	\$7,496	\$10,658
Classroom dollars	5,649	6,145	4,979	4,031	6,520
Nonclassroom dollars:	6,278	8,448	5,209	3,465	4,138
Administration	2,382	3,434	1,571	746	1,138
Plant operations	1,480	1,654	1,558	924	1,015
Food service	732	835	463	396	412
Transportation	655	789	509	369	452
Student support	572	622	647	582	593
Instruction support	457	1,114	461	448	528

STUDENT ACHIEVEMENT, TEACHER MEASURES, AND FINANCIAL ASSESSMENT

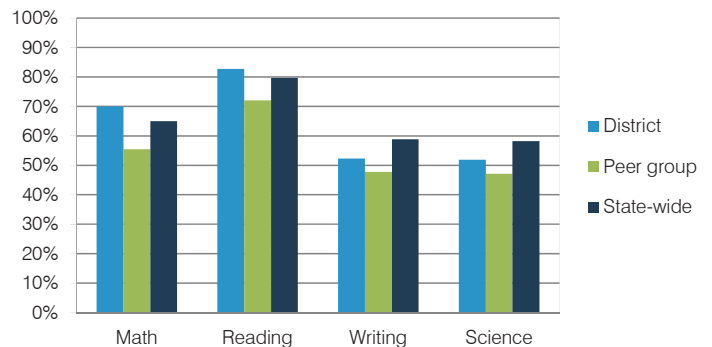
ADE-reported district and school letter grades

District grade: **A**

Grade	Number of schools ¹	Percentage of schools
A	2	67%
B	0	0%
C	1	33%
D	0	0%
F	0	0%
Not rated	0	0%

¹ Includes schools that share a campus and on-line schools.

Students who met state standards (AIMS)



Student and teacher measures

Measure	District	Peer average	State average
Attendance rate	95%	93%	94%
Graduation rate (2012)	76%	80%	77%
Poverty rate (2012)	35%	33%	25%
Students per teacher	12.6	15.3	18.3
Average teacher salary	\$38,930	\$43,207	\$45,264
Amount from Proposition 301	\$2,320	\$3,525	\$3,784
Average years of teacher experience	6.9	11.9	10.9
Percentage of teachers in first 3 years	50%	20%	19%

Financial stress assessment

Overall financial stress level: **Low**

Measure: 2011 through 2013	Assessment
Number of students attending district	Small school adjustment
Spending exceeded operating/capital budgets	No overspending
Spending increase election results	No election held
Operating reserve percentage (max. 4%), trend	4.0%, Steady
Years of capital reserve held	More than 3 years
Current financial and internal control status	Marginally compliant

