

Avondale Elementary School District

Maricopa County
Operational peer group: I
Legislative districts: 12, 13, 23

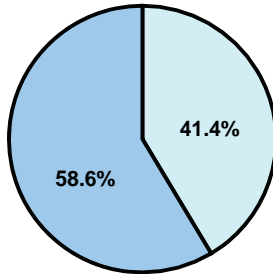
District size: Medium-Large
Students attending: 6,019
Number of schools: 8

OPERATIONAL EFFICIENCY

Average per-pupil spending

District
State

Classroom
\$4,299
\$4,497



Nonclassroom
\$3,036
\$3,411

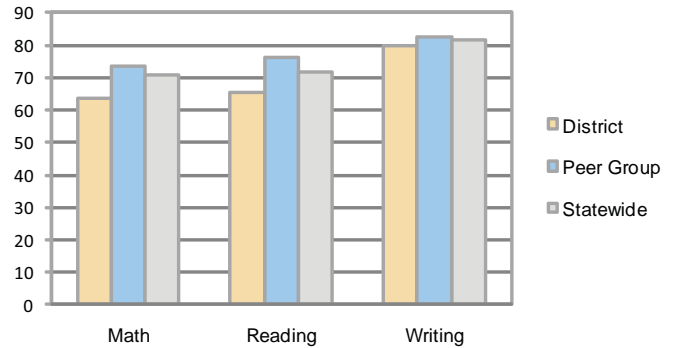
Total
\$7,335
\$7,908

5-year trend

Total spending per pupil increased by 34 percent. Spending in the classroom decreased significantly from 64.1 to 58.6 percent. Spending on student and instruction support increased significantly, while spending in other nonclassroom areas remained fairly stable.

STUDENT ACHIEVEMENT AND TEACHER INFORMATION

Percentage of students meeting state standards (AIMS)



Adequate Yearly Progress (AYP) toward federal goals

7 schools met all applicable AYP objectives for NCLB. 1 did not because some students did not demonstrate sufficient academic progress.

Student and teacher information

Measure	District	Peer average	State average
Attendance rate	96%	95%	95%
Graduation rate (2008)	N/A	84%	75%
Poverty rate	17%	13%	19%
Student/teacher ratio	17.3	17.5	17.1
Average teacher salary	\$46,751	\$44,052	\$45,209
Average years' experience	8.4	8.4	8.3
Percent of teachers in first 3 years	26%	30%	16%

District's cost measures relative to peer group

Operational Area	Measure	District	Peer Average	State Average
Administration	Cost per pupil	\$638	\$840	\$729
	Students per administrator	92	69	66
Plant Operations	Cost per square foot	\$7.18	\$7.16	\$6.40
	Square footage per student	100	123	144
Food Service	Cost per meal equivalent	\$2.66	\$2.38	\$2.53
Transportation	Cost per mile	\$3.70	\$5.18	\$3.36
	Miles per rider	153	132	271

Very Low Low Comparable High Very High

Per-pupil spending by function

	District		Peer	State	National
	2008	2009	2009	2009	2007
Total	\$6,988	\$7,335	\$8,194	\$7,908	\$9,683
Classroom dollars	\$4,172	\$4,299	\$4,515	\$4,497	\$5,903
Nonclassroom dollars:	\$2,816	\$3,036	\$3,679	\$3,411	\$3,780
Administration	690	638	840	729	1,050
Plant Operations	585	717	890	920	951
Food Service	448	467	525	382	369
Transportation	165	158	253	343	406
Student Support	472	546	626	594	512
Instruction Support	456	510	545	431	470
Other	0	0	0	12	22

Proposition 301

Teacher pay

On average, each teacher earned \$4,636 in additional salary, and each instructional aide, librarian, speech pathologist, counselor, and occupational therapist earned between \$2,537 and \$5,088.

Performance pay plan goals and results

Type of goal	Goal met?
Student achievement	■
Dropout/ graduation rates	
Student attendance	■
Parent/student satisfaction	■
Teacher attendance	■
Teacher professional development	
Teacher evaluations	
Tutoring	
Other	

■ = yes, □ = no, and ▴ = partially