

Baboquivari Unified School District

Pima County

Efficiency peer groups 5 and T-10, Achievement peer group 7

Legislative district(s): 4

District size, location:

Medium, Rural

Students attending:

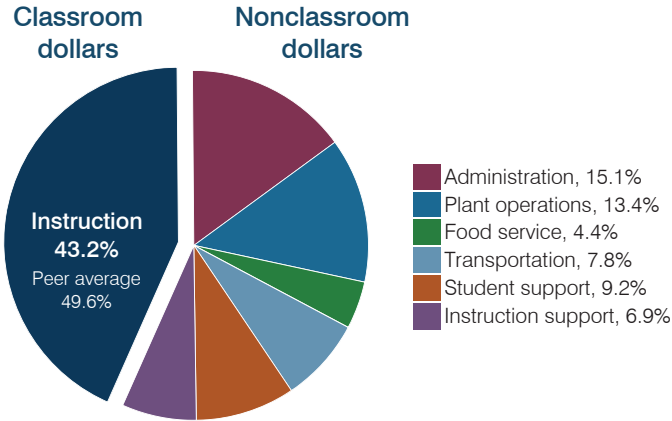
965

Number of schools:

4

OPERATIONAL EFFICIENCY

Spending by operational area



Efficiency measures relative to peer averages

Operational area	Measure	District	Peer average	State average
Administration	Cost per pupil	\$2,541	\$1,145	\$806
	Students per administrative position	35	56	67
Plant operations	Cost per square foot	\$6.94	\$5.22	\$6.10
	Square footage per student	327	270	154
Food service	Cost per meal	\$3.12	\$3.40	\$2.81
Transportation	Cost per mile	\$2.23	\$1.89	\$3.72
	Cost per rider	\$1,063	\$1,242	\$1,092

Per pupil spending

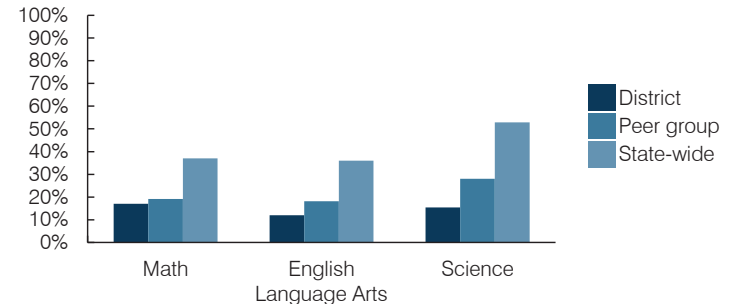
Spending by area	District		Peer average 2016	State average 2016
	2015	2016		
Instruction	\$ 7,343	\$ 7,284	\$ 4,576	\$ 4,145
Administration	2,486	2,541	1,145	806
Plant operations	2,213	2,268	1,342	939
Food service	726	742	450	415
Transportation	1,340	1,314	522	364
Student support	1,592	1,546	695	633
Instruction support	1,126	1,169	396	444
Total operational	\$ 16,826	\$ 16,864	\$ 9,126	\$ 7,746
Land and buildings	\$ 260	\$ 69	\$ 452	\$ 621
Equipment	1,435	677	498	400
Interest	34	0	243	216
Other	206	45	65	153
Total nonoperational	\$ 1,935	\$ 791	\$ 1,258	\$ 1,390
Total per pupil spending	\$ 18,761	\$ 17,655	\$ 10,384	\$ 9,136

STUDENT AND TEACHER MEASURES, FINANCIAL ASSESSMENT, AND REVENUES

Student and teacher measures

Measure	District	Peer average	State average
Attendance rate (2015)	90%	92%	94%
Graduation rate (2015)	69%	77%	78%
Poverty rate (2015)	46%	42%	23%
Students per teacher	12.7	15.6	18.6
Average teacher salary	\$55,263	\$45,126	\$46,384
Amount from Proposition 301	\$6,202	\$4,619	\$5,315
Average years of teacher experience	8.1	12.6	11.0
Percentage of teachers in first 3 years	10%	15%	20%

Students who passed state assessments



Financial stress assessment

Overall financial stress level: **Moderate**

Measure: 2014 through 2016

Measure	Assessment
Change in number of district students	Steady
Spending exceeded operating/capital budgets	Operating only
Spending increase election results	No election held
Operating reserve percentage, Trend	Impact Aid Fund reserve
Years of capital reserve held	Impact Aid Fund reserve
Current financial and internal control status	Marginally compliant

Low	Moderate	High
-----	----------	------

Per pupil revenues

Revenues by source	District		Peer average 2016	State average 2016
	2015	2016		
Federal	\$ 10,447	\$ 12,138	\$ 4,015	\$ 1,301
State	6,404	6,640	4,190	3,780
Local	1,164	1,116	4,081	4,268
Total revenues per pupil	\$ 18,015	\$ 19,894	\$ 12,286	\$ 9,349

Select revenues from common sources

Source	District 2016	Peer average 2016	State average 2016
Equalization formula funding	\$ 6,913	\$ 6,943	\$ 5,922
Grants	3,365	5,422	1,805
Donations and tax credits	63	45	139

Select revenues from less common sources

Source	District 2016	Peer average 2016	State average 2016
Desegregation	\$ 0	\$ 0	1 of 29
Small school adjustment	0	0	0 of 29
Federal impact aid	7,317	7,006	14 of 29
Voter-approved levy increases	0	0	19 of 29

Classroom dollar percentage

Year:	2001	2002	2003	2004	2005	2006	2007	2008	2009	2010	2011	2012	2013	2014	2015	2016
Percentage:	49.7	48.3	49.4	52.2	49.6	49.3	45.2	51.1	47.7	45.0	46.0	40.1	38.7	41.4	43.6	43.2

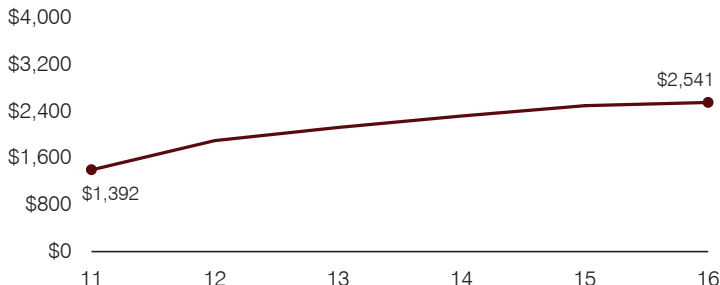
OPERATIONAL TRENDS

Fiscal years as indicated

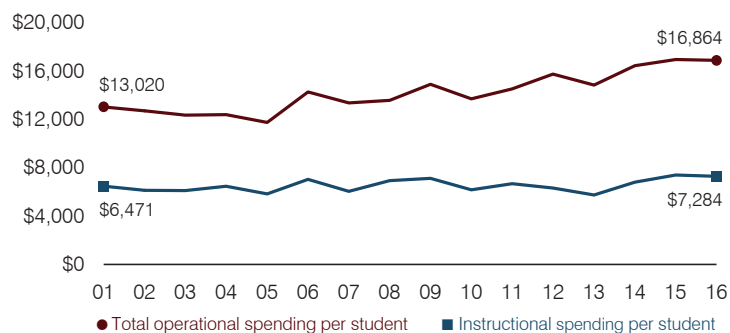
5-year spending trend (2011 through 2016)

Total operational spending per pupil, adjusted for inflation, increased by 16 percent. The percentage of dollars spent in the classroom varied year to year, decreasing overall from 46 to 43.2 percent. Overall, as a percentage of total operational spending, administration and student support increased substantially and food service increased slightly, while plant operations and instruction support decreased substantially.

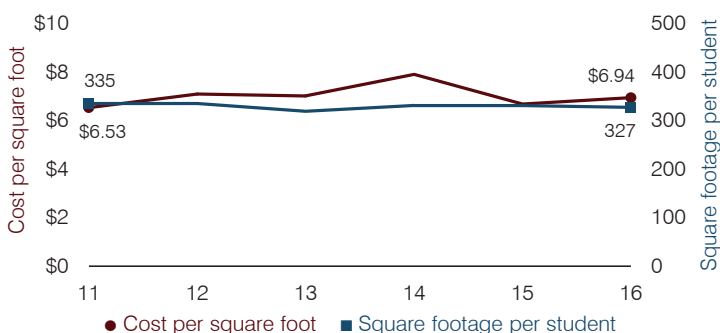
Administrative cost per pupil



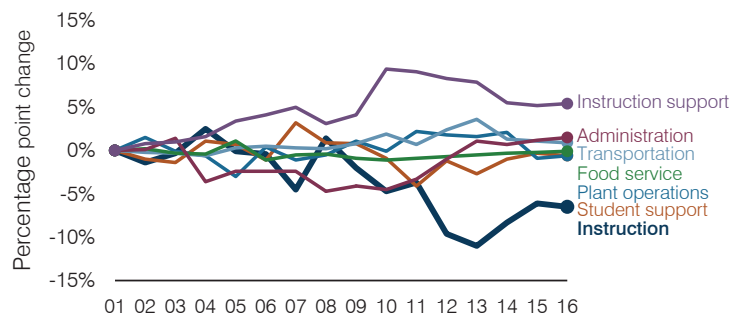
Total operational and instructional spending per pupil (inflation adjusted to 2016 dollars)



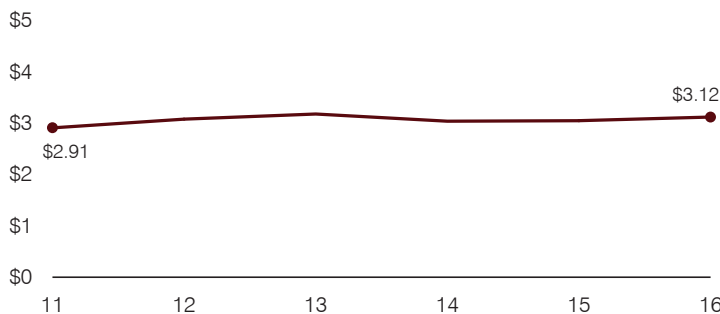
Plant cost per square foot and square footage per student



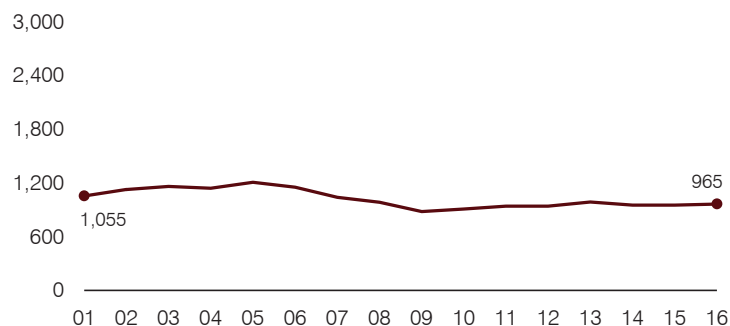
Changes in operational spending percentages



Food service cost per meal



Students attending



Transportation costs per mile and per rider

