

Balsz Elementary School District

Maricopa County
Operational peer group: I
Legislative districts: 11, 14, 15, 16

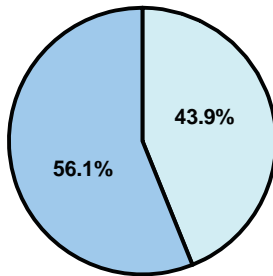
District size: Medium-Large
Students attending: 2,814
Number of schools: 5

OPERATIONAL EFFICIENCY

Average per-pupil spending

District
State

Classroom
\$5,109
\$4,497



Nonclassroom
\$4,001
\$3,411

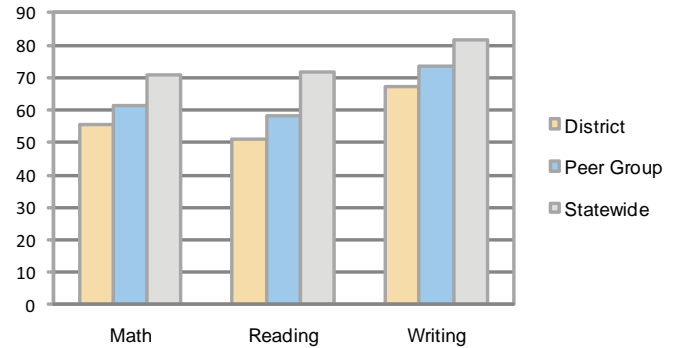
Total
\$9,110
\$7,908

5-year trend

Total spending per pupil increased by 41 percent. Spending in the classroom varied year to year and decreased slightly overall from 56.9 to 56.1 percent. Spending on plant operations and instruction support increased significantly, while spending in other nonclassroom areas remained stable.

STUDENT ACHIEVEMENT AND TEACHER INFORMATION

Percentage of students meeting state standards (AIMS)



Adequate Yearly Progress (AYP) toward federal goals

2 schools met all applicable AYP objectives for NCLB. 3 did not because some students did not demonstrate sufficient academic progress.

District's cost measures relative to peer group

Operational Area	Measure	District	Peer Average	State Average
Administration	Cost per pupil	\$807	\$840	\$729
	Students per administrator	76	69	66
Plant Operations	Cost per square foot	\$7.99	\$7.16	\$6.40
	Square footage per student	152	123	144
Food Service	Cost per meal equivalent	\$2.20	\$2.38	\$2.53
Transportation	Cost per mile	\$2.67	\$5.18	\$3.36
	Miles per rider	185	132	271

Very Low Low Comparable High Very High

Student and teacher information

Measure	District	Peer average	State average
Attendance rate	95%	95%	95%
Graduation rate (2008)	N/A	86%	75%
Poverty rate	27%	31%	19%
Student/teacher ratio	15.4	16.2	17.1
Average teacher salary	\$44,314	\$46,306	\$45,209
Average years' experience	7.4	8.5	8.3
Percent of teachers in first 3 years	34%	33%	16%

Proposition 301

Teacher pay

On average, each teacher, librarian, and counselor earned an additional \$6,363 in salary.

Per-pupil spending by function

	District		Peer	State	National
	2008	2009	2009	2009	2007
Total	\$8,531	\$9,110	\$8,194	\$7,908	\$9,683
Classroom dollars	\$5,012	\$5,109	\$4,515	\$4,497	\$5,903
Nonclassroom dollars:	\$3,519	\$4,001	\$3,679	\$3,411	\$3,780
Administration	713	807	840	729	1,050
Plant Operations	959	1,216	890	920	951
Food Service	614	581	525	382	369
Transportation	295	267	253	343	406
Student Support	542	622	626	594	512
Instruction Support	396	508	545	431	470
Other	0	0	0	12	22

Performance pay plan goals and results

Type of goal	Goal met?
Student achievement	■
Dropout/ graduation rates	
Student attendance	
Parent/student satisfaction	
Teacher attendance	
Teacher professional development	■
Teacher evaluations	
Tutoring	
Other	■

■ = yes, □ = no, and ▴ = partially