

Classroom Dollars and Proposition 301 Results

Balsz Elementary School District

Maricopa County

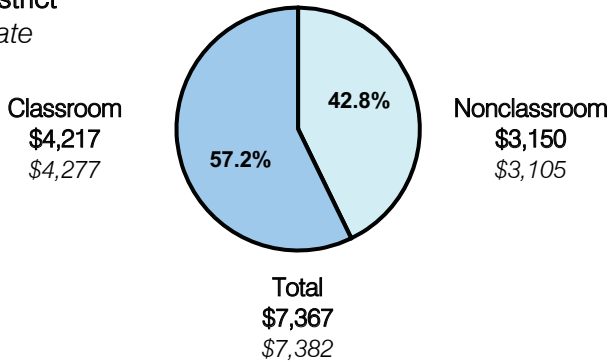
District size: Medium
 Students attending: 3,323
 Number of schools: 5
 Number of certified teachers: 183

Classroom Dollars

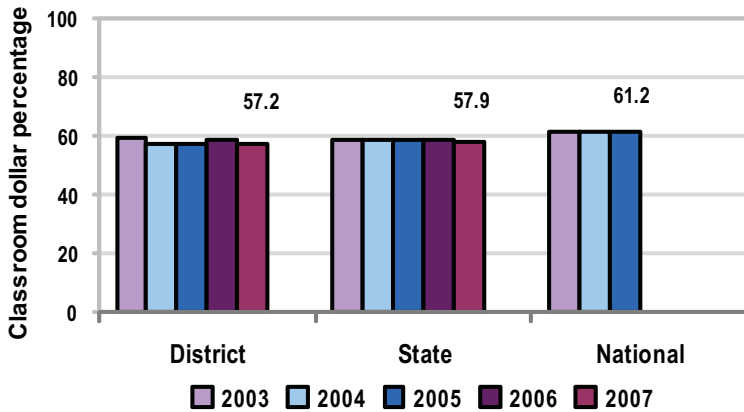
Fiscal year 2007 averages per pupil

District

State



5-year comparison



Expenditures by function

| | District | | | | | State 2007 | National 2005 |
|-----------------------|----------|------|------|------|------|------------|---------------|
| | 2003 | 2004 | 2005 | 2006 | 2007 | | |
| Classroom dollars | 59.4 | 56.9 | 57.2 | 58.9 | 57.2 | 57.9 | 61.2 |
| Nonclassroom dollars: | | | | | | | |
| Administration | 9.3 | 9.5 | 9.4 | 9.0 | 8.5 | 9.5 | 11.0 |
| Plant operations | 9.9 | 11.7 | 10.5 | 10.0 | 11.8 | 11.3 | 9.6 |
| Food service | 6.4 | 7.7 | 7.7 | 7.9 | 7.7 | 4.7 | 3.9 |
| Transportation | 3.5 | 3.2 | 3.0 | 2.7 | 3.4 | 4.3 | 4.1 |
| Student support | 7.5 | 7.8 | 7.4 | 7.1 | 7.3 | 7.3 | 5.2 |
| Instruction support | 4.0 | 3.2 | 4.8 | 4.4 | 4.1 | 4.8 | 4.8 |
| Other | | | | | | 0.2 | 0.2 |

Comparative Information

| | District | | | State |
|---------------------------|----------|----------|----------|----------|
| | 2005 | 2006 | 2007 | 2007 |
| Student/teacher ratio | 17.9 | 19.1 | 18.2 | 17.4 |
| Average teacher salary | \$38,280 | \$41,330 | \$41,538 | \$43,833 |
| Average years' experience | 6.4 | 6.8 | 7.0 | 8.1 |

Classroom dollar ranking: 72 of 229 districts.

Proposition 301

District-reported 2007 results

Teacher pay

- On average, each teacher, librarian, and counselor earned an additional \$4,477 in salary, which includes performance pay for fiscal year 2006.

Performance

- The District accomplished its goals, which were the same as the prior fiscal year's goals and were based on school and individual performance.
- At least 51 percent of the students who started the school year with the District showed growth in reading and math.
- Teachers attended at least 3 hours of professional development on Six-Traits Writing, Step-Up to Writing, or literacy development.

Menu

- Monies were primarily used to increase eligible employee compensation.
- 2 resource positions were hired to work with ELL students.