

Beaver Creek Elementary School District

Yavapai County

Efficiency peer groups 10 and T-7, Achievement peer group 18

Legislative district(s): 1 and 6

District size, location:

Small, Rural

Students attending:

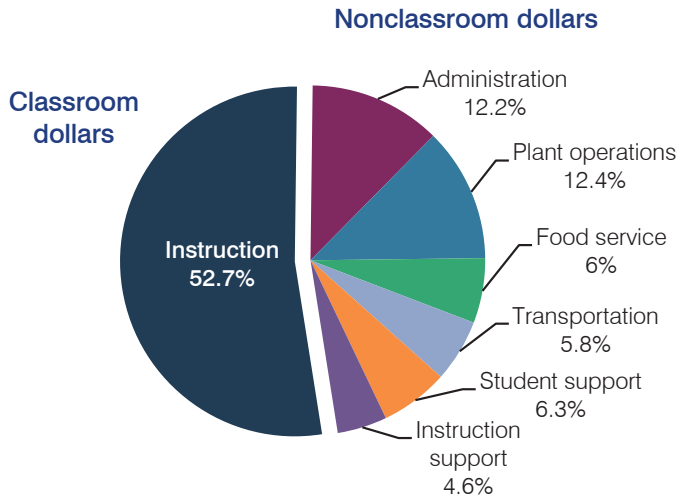
342

Number of schools:

1

OPERATIONAL EFFICIENCY

Spending by operational area



5-year spending trend

Total spending per pupil increased by 9 percent. Spending in the classroom decreased from 62 to 52.7 percent. Overall, spending on student support and instruction support increased substantially and spending on administration and plant operations increased. Spending on transportation and food service varied year to year.

Cost measures relative to peer averages

Operational area	Measure	District	Peer average	State average
Administration	Cost per pupil	\$889	\$1,130	\$746
	Students per administrator	50	55	67
Plant operations	Cost per square foot	\$6.01	\$6.14	\$6.03
	Square footage per student	151	157	153
Food service	Cost per meal equivalent	\$2.47	\$2.74	\$2.58
Transportation	Cost per mile	\$2.73	\$3.06	\$3.55
	Cost per rider	\$595	\$677	\$1,015

Very low Low Comparable High Very high

Per pupil spending by operational area

	District		Peer average 2013	State average 2013	National average 2011
	2012	2013			
Total	\$7,423	\$7,312	\$8,518	\$7,496	\$10,658
Classroom dollars	3,805	3,856	4,624	4,031	6,520
Nonclassroom dollars:	3,618	3,456	3,894	3,465	4,138
Administration	983	889	1,130	746	1,138
Plant operations	1,061	905	976	924	1,015
Food service	435	440	511	396	412
Transportation	483	431	537	369	452
Student support	362	457	499	582	593
Instruction support	294	334	241	448	528

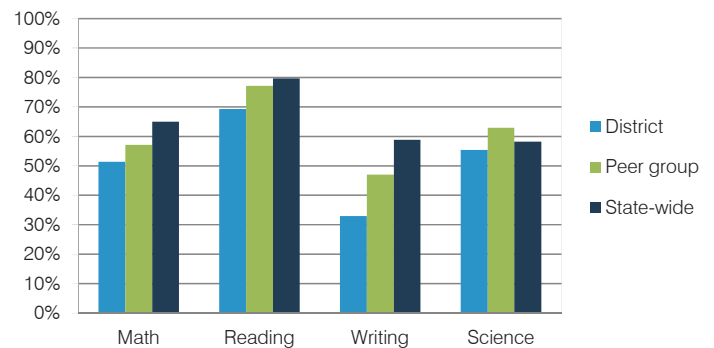
STUDENT ACHIEVEMENT, TEACHER MEASURES, AND FINANCIAL ASSESSMENT

ADE-reported district and school letter grades

District grade: **C**

Grade	Number of schools	Percentage of schools
A	0	0%
B	0	0%
C	1	100%
D	0	0%
F	0	0%
Not rated	0	0%

Students who met state standards (AIMS)



Student and teacher measures

Measure	District	Peer average	State average
Attendance rate	94%	95%	94%
Graduation rate (2012)	N/A	N/A	N/A
Poverty rate (2012)	22%	24%	25%
Students per teacher	15.2	12.4	18.3
Average teacher salary	\$37,544	\$45,242	\$45,264
Amount from Proposition 301	\$4,850	\$2,827	\$3,784
Average years of teacher experience	11.1	13.6	10.9
Percentage of teachers in first 3 years	25%	12%	19%

Financial stress assessment

Overall financial stress level: **Low**

Measure: 2011 through 2013

Assessment

Number of students attending district	Increase
Spending exceeded operating/capital budgets	No overspending
Spending increase election results	No election held
Operating reserve percentage (max. 4%), trend	2.8%, Varying
Years of capital reserve held	1 to 3 years
Current financial and internal control status	Compliant

Stress level

