

# Beaver Creek Elementary School District

Yavapai County

District size, location:

Small, Rural

Efficiency peer groups 10 and T-7, Achievement peer group 17<sup>1</sup>

Students attending:

277

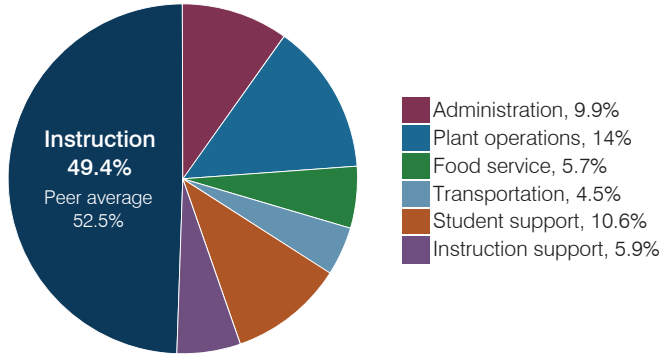
Legislative district(s): 1 and 6

Number of schools:

1

## OPERATIONAL EFFICIENCY

### Spending by operational area



### Efficiency measures relative to peer averages

Operational area	Measure	District	Peer average	State average
Administration	Cost per pupil	\$967	\$1,231	\$844
	Students per administrative position	44	54	67
Plant operations	Cost per square foot	\$5.09	\$6.81	\$6.30
	Square footage per student	270	153	155
Food service	Cost per meal	\$4.10	\$3.41	\$2.88
Transportation	Cost per mile	\$2.43	\$2.98	\$3.84
	Cost per rider	\$718	\$921	\$1,198

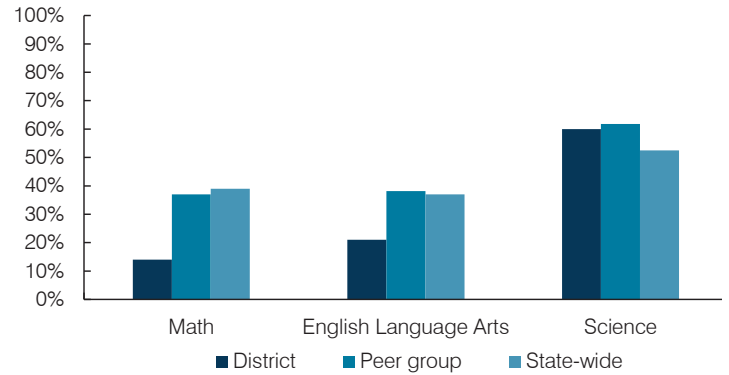
Very low    Low    Comparable    High    Very high

### Per pupil spending

Spending by area	District		Peer average 2017	State average 2017
	2016	2017		
Instruction	\$ 4,826	\$ 4,828	\$ 4,993	\$ 4,377
Administration	1,058	967	1,231	844
Plant operations	1,216	1,375	1,125	977
Food service	556	561	549	422
Transportation	454	438	575	381
Student support	1,039	1,034	606	679
Instruction support	535	575	397	461
<b>Total operational</b>	<b>\$ 9,684</b>	<b>\$ 9,778</b>	<b>\$ 9,476</b>	<b>\$ 8,141</b>
Land and buildings	\$ 161	\$ 59	\$ 194	\$ 691
Equipment	334	274	329	424
Interest	525	530	167	236
Other	53	59	91	161
<b>Total nonoperational</b>	<b>\$ 1,073</b>	<b>\$ 922</b>	<b>\$ 781</b>	<b>\$ 1,512</b>
<b>Total per pupil spending</b>	<b>\$ 10,757</b>	<b>\$ 10,700</b>	<b>\$ 10,257</b>	<b>\$ 9,653</b>

## STUDENT ACHIEVEMENT, STUDENT AND TEACHER MEASURES, AND REVENUES

### Students who passed state assessments



### Student and teacher measures

Measure	District	Peer average	State average
Attendance rate	94%	94%	94%
Graduation rate (2016)	N/A	N/A	N/A
Poverty rate (2016)	18%	19%	22%
Special education population	17%	14%	12%
Students per teacher	16.9	13.3	18.5
Average teacher salary	\$44,875	\$44,961	\$48,372
Amount from Prop 301	\$6,678	\$4,257	\$5,840
Average years of teacher experience	11.4	12.6	11.3
Percentage of teachers in first 3 years	7%	11%	19%

### Per pupil revenues

Revenues by source	District		Peer average 2017	State average 2017
	2016	2017		
Federal	\$ 2,060	\$ 1,963	\$ 2,395	\$ 1,318
State	5,165	5,001	4,806	3,831
Local	4,422	4,566	4,236	4,443
<b>Total per pupil revenues</b>	<b>\$ 11,647</b>	<b>\$ 11,530</b>	<b>\$ 11,437</b>	<b>\$ 9,592</b>

#### Select revenues from common sources

	District	Peer average	State average
Equalization formula funding	\$ 7,088	\$ 6,884	\$ 6,815
Amount from Prop 123	291	283	269
Prop 123 additional funding	53	52	50
Grants	2,193	1,984	1,792
Donations and tax credits	180	273	341

#### Select revenues from less common sources

	District	Peer average	Number of peers receiving
Desegregation	\$ 0	\$ 0	0 of 12
Small school adjustment	0	0	0 of 12
Federal impact aid	0	0	3 of 12
Voter-approved levy increases	1,117	1,127	6 of 12

<sup>1</sup> See Appendix A for information such as districts included in each peer group and Appendix B for sources and methodology.

# Beaver Creek ESD—page 2

## Instructional spending percentage

Year:	2001	2002	2003	2004	2005	2006	2007	2008	2009	2010	2011	2012	2013	2014	2015	2016	2017
Percentage:	59.4	65.0	63.1	63.6	63.9	60.7	65.6	62.0	59.4	57.8	56.6	51.3	52.7	53.0	50.5	49.8	49.4

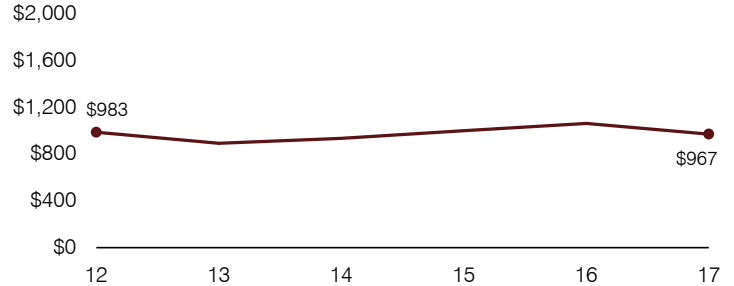
## OPERATIONAL TRENDS AND FINANCIAL STRESS ASSESSMENT

Fiscal years as indicated

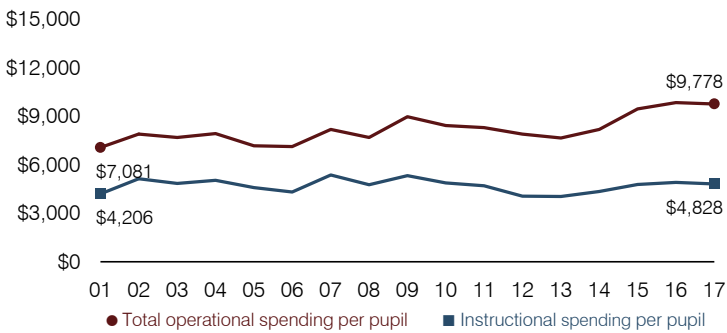
### 5-year spending trend (2012 through 2017)

Total operational spending per pupil, adjusted for inflation, increased by 24 percent. The percentage of dollars spent on instruction varied year to year, decreasing overall from 51.3 to 49.4 percent. Overall, as a percentage of total operational spending, student support increased substantially and instruction support increased, while administration and transportation decreased substantially.

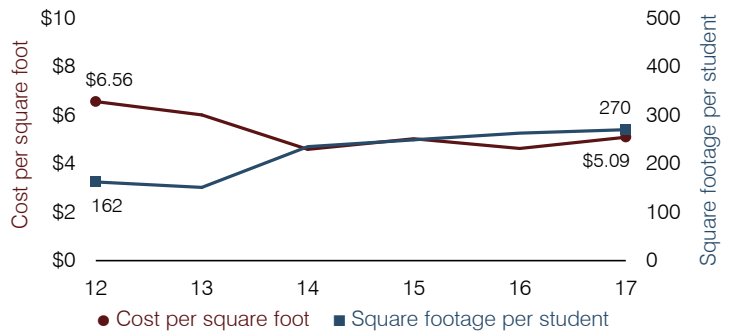
### Administrative cost per pupil



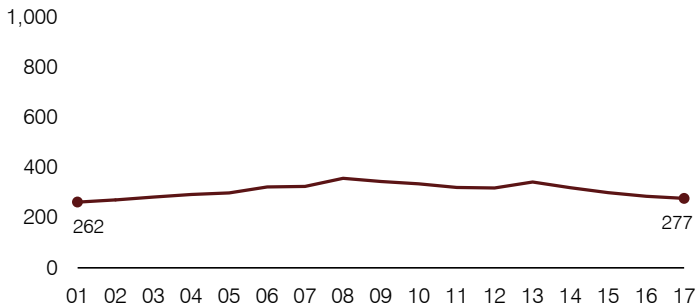
### Total operational and instructional spending per pupil (inflation adjusted to 2017 dollars)



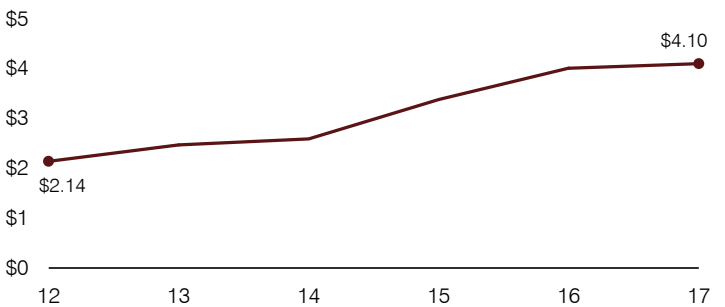
### Plant cost per square foot and square footage per student



### Students attending



### Food service cost per meal



### Financial stress assessment

Overall financial stress level:

**Moderate**

Measure: 2015 through 2017

Assessment

Change in number of district students	Moderate decrease
Spending exceeded operating/capital budgets	No overspending
Spending increase election results	No election held
Operating reserve percentage, Trend	4.4%, Varying
Years of capital reserve held	Less than 1 year
Current financial and internal control status	Compliant

Low

Moderate

High

### Transportation costs per mile and per rider

