

# Beaver Creek Elementary School District

Yavapai County  
Operational peer group: K  
Legislative districts: 1

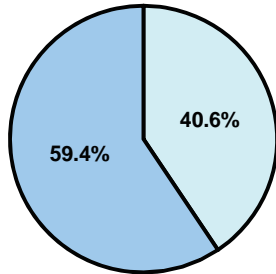
District size: Small  
Students attending: 344  
Number of schools: 1

## OPERATIONAL EFFICIENCY

### Average per-pupil spending

District  
State

Classroom  
**\$4,724**  
\$4,497



Nonclassroom  
**\$3,224**  
\$3,411

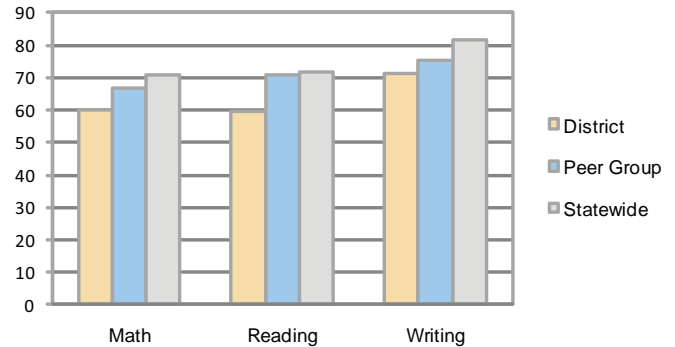
Total  
**\$7,948**  
\$7,908

### 5-year trend

Total spending per pupil increased by 31 percent. Spending in the classroom was very inconsistent year to year and decreased significantly overall from 63.6 to 59.4 percent. Spending on student and instruction support increased significantly, while spending in other nonclassroom areas varied year to year.

## STUDENT ACHIEVEMENT AND TEACHER INFORMATION

### Percentage of students meeting state standards (AIMS)



### Adequate Yearly Progress (AYP) toward federal goals

The District's school met all applicable AYP objectives for NCLB.

### Student and teacher information

Measure	District	Peer average	State average
Attendance rate	95%	95%	95%
Graduation rate (2008)	N/A	79%	75%
Poverty rate	15%	14%	19%
Student/teacher ratio	13.5	14.7	17.1
Average teacher salary	\$39,855	\$43,600	\$45,209
Average years' experience	10.0	10.7	8.3
Percent of teachers in first 3 years	26%	23%	16%

### District's cost measures relative to peer group

Operational Area	Measure	District	Peer Average	State Average
Administration	Cost per pupil	\$907	\$1,288	\$729
	Students per administrator	NR	70	66
Plant Operations	Cost per square foot	\$5.78	\$6.94	\$6.40
	Square footage per student	150	149	144
Food Service	Cost per meal equivalent	\$2.49	\$3.05	\$2.53
Transportation	Cost per mile	\$2.10	\$2.22	\$3.36
	Miles per rider	231	268	271

Very Low    Low    Comparable    High    Very High

### Per-pupil spending by function

	District		Peer	State	National
	2008	2009	2009	2009	2007
<b>Total</b>	<b>\$6,720</b>	<b>\$7,948</b>	<b>\$9,786</b>	<b>\$7,908</b>	<b>\$9,683</b>
<b>Classroom dollars</b>	<b>\$4,169</b>	<b>\$4,724</b>	<b>\$5,344</b>	<b>\$4,497</b>	<b>\$5,903</b>
<b>Nonclassroom dollars:</b>	<b>\$2,551</b>	<b>\$3,224</b>	<b>\$4,442</b>	<b>\$3,411</b>	<b>\$3,780</b>
Administration	752	907	1,288	729	1,050
Plant Operations	705	867	1,162	920	951
Food Service	426	502	582	382	369
Transportation	367	392	512	343	406
Student Support	182	334	586	594	512
Instruction Support	118	222	311	431	470
Other	1	0	1	12	22

### Proposition 301

#### Teacher pay

On average, each teacher earned \$6,743 in additional salary.

#### Performance pay plan goals and results

Type of goal	Goal met?
Student achievement	■
Dropout/ graduation rates	
Student attendance	
Parent/student satisfaction	
Teacher attendance	
Teacher professional development	
Teacher evaluations	
Tutoring	
Other	

■ = yes, □ = no, and ▮ = partially