

Classroom Dollars and Proposition 301 Results

Beaver Creek Elementary School District

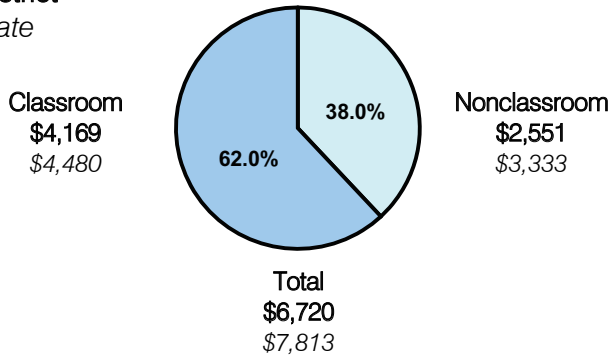
Yavapai County

District size: Small
 Students attending: 357
 Number of schools: 1
 Number of certified teachers: 21

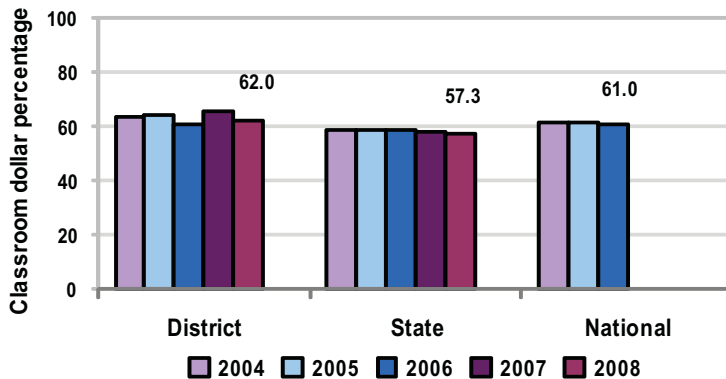
Classroom Dollars

Fiscal year 2008 averages per pupil

District
 State



5-year comparison



Expenditures by function

	District					State 2008	National 2006
	2004	2005	2006	2007	2008		
Classroom dollars	63.6	63.9	60.7	65.6	62.0	57.3	61.0
Nonclassroom dollars:							
Administration	10.7	9.6	12.5	9.9	11.2	9.2	10.8
Plant operations	9.6	10.3	10.0	9.2	10.5	11.3	9.9
Food service	8.6	9.2	8.5	7.7	6.3	4.8	3.8
Transportation	5.0	5.3	5.6	4.7	5.5	4.4	4.2
Student support	1.9	1.3	1.8	1.8	2.7	7.4	5.2
Instruction support	0.6	0.4	0.9	1.1	1.8	5.4	4.9
Other						0.2	0.2

Comparative Information

	District			State 2008
	2006	2007	2008	
Student/teacher ratio	19.0	14.8	15.7	17.3
Average teacher salary	\$38,000	\$38,776	\$36,102	\$44,967
Average years' experience	9.4	7.8	6.9	8.1

Classroom dollar ranking: 15 of 230 districts.

Proposition 301

District-reported 2008 results

Teacher pay

- On average, each teacher earned an additional \$5,289 in salary.

Performance

- The District accomplished its goals, which were similar to the prior fiscal year's goals and were based on school and individual performance.
- Based on standardized testing, students improved reading and math scores.
- Teachers completed annual curriculum maps that were aligned with state standards.
- 93 percent of parents surveyed were satisfied with the District.

Menu

- Monies were used solely to increase eligible employee compensation.