

Classroom Dollars and Proposition 301 Results

Beaver Creek Elementary School District

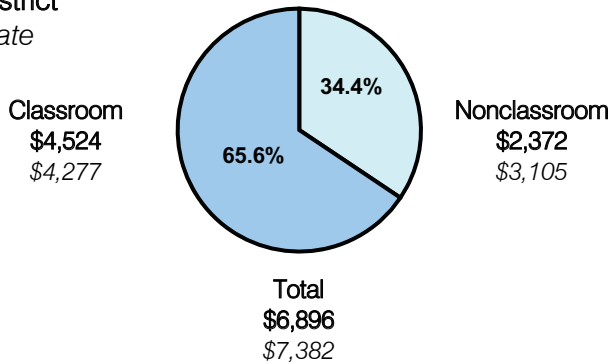
Yavapai County

District size: Small
 Students attending: 325
 Number of schools: 1
 Number of certified teachers: 22

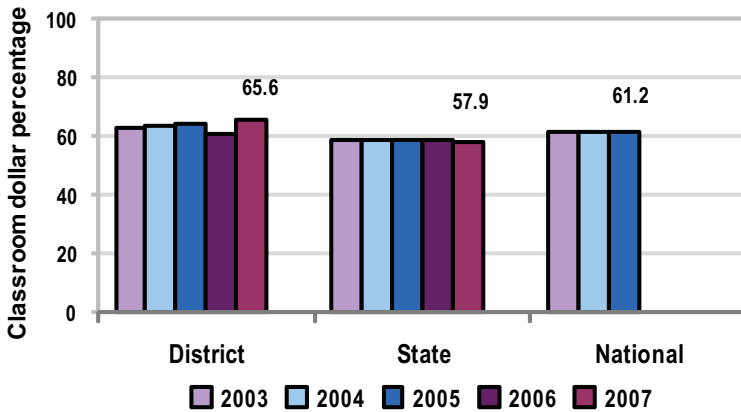
Classroom Dollars

Fiscal year 2007 averages per pupil

District
 State



5-year comparison



Expenditures by function

	Percentage					State 2007	National 2005
	District						
	2003	2004	2005	2006	2007		
Classroom dollars	63.1	63.6	63.9	60.7	65.6	57.9	61.2
Nonclassroom dollars:							
Administration	11.4	10.7	9.6	12.5	9.9	9.5	11.0
Plant operations	9.6	9.6	10.3	10.0	9.2	11.3	9.6
Food service	9.1	8.6	9.2	8.5	7.7	4.7	3.9
Transportation	5.0	5.0	5.3	5.6	4.7	4.3	4.1
Student support	1.3	1.9	1.3	1.8	1.8	7.3	5.2
Instruction support	0.5	0.6	0.4	0.9	1.1	4.8	4.8
Other						0.2	0.2

Comparative Information

	District			State 2007
	2005	2006	2007	
Student/teacher ratio	15.0	19.0	14.8	17.4
Average teacher salary	\$36,624	\$38,000	\$38,776	\$43,833
Average years' experience	8.4	9.4	7.8	8.1

Classroom dollar ranking: 9 of 229 districts.

Proposition 301

District-reported 2007 results

Teacher pay

- On average, each teacher earned an additional \$6,133 in salary.

Performance

- The District accomplished its goals, which were based on district and individual performance.
- Based on standardized testing, students improved reading and writing scores.
- Teachers demonstrated that classroom curriculum was aligned to state standards.
- Parent satisfaction and involvement were measured by survey results and attendance at parent-teacher organization meetings.

Menu

- Monies were used solely to increase teacher compensation.