

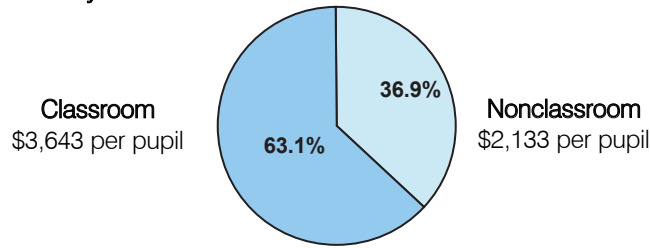
# Classroom Dollars and Proposition 301 Results

## Beaver Creek Elementary School District

District size: Small  
 Students attending: 282  
 Number of schools: 1  
 Number of certified teachers: 19

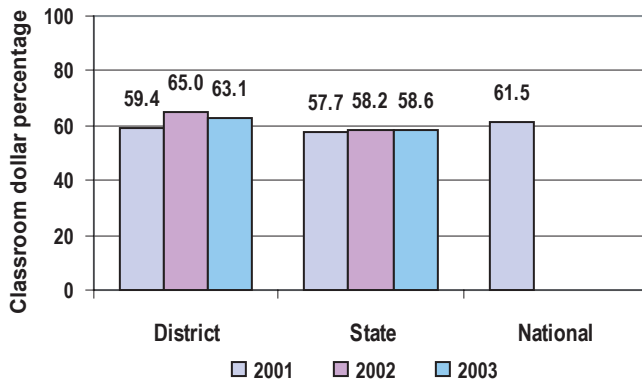
### Classroom Dollars

Fiscal year 2003



Classroom dollar ranking: 15 of 226 districts.

### 3-year comparison



### Expenditures by function

	Percentage				
	District			State	National
	2001	2002	2003	2003	2000
Classroom dollars	59.4	65.0	63.1	58.6	61.7
Nonclassroom dollars:					
Administration	12.2	10.8	11.4	9.9	10.9
Plant operations	11.6	9.3	9.6	11.7	9.6
Food service	9.6	8.4	9.1	4.6	4.0
Transportation	5.7	4.8	5.0	3.9	4.0
Student support	1.0	1.4	1.3	6.8	5.0
Instruction support	0.5	0.3	0.5	4.3	4.5
Other				0.2	0.3

### Comparative Information

	District			State
	2001	2002	2003	2003
Student/teacher ratio	18.7	15.9	14.8	17.9
Average teacher salary	\$31,071	\$33,083	\$36,529	\$40,328
Average years' experience	9.4	8.7	8.9	8.7

### Proposition 301

	2002 Expenditures	2003 Expenditures
Base	\$ 9,075	\$17,986
Performance	29,198	29,918
Menu	<u>26,657</u>	<u>26,737</u>
Total	<u>\$64,930</u>	<u>\$74,641</u>

### District-reported 2003 results

#### Teacher pay

- On average, each teacher earned \$3,644 in additional salary.

#### Performance

- The District accomplished its goals, which were based on school and individual performance.
- Schools identified at least one performance objective in math, reading, and writing for emphasis and assessment.
- A mentoring program was established, along with a technology committee responsible for coordinating efforts to obtain grants.
- Teachers tutored students and also frequently updated parents about how to assist students with schoolwork.

#### Menu

- 17 teachers earned monies for completing college courses and/or attending curriculum workshops.
- Monies were also paid to staff for participating in special projects and for making presentations to parents.