

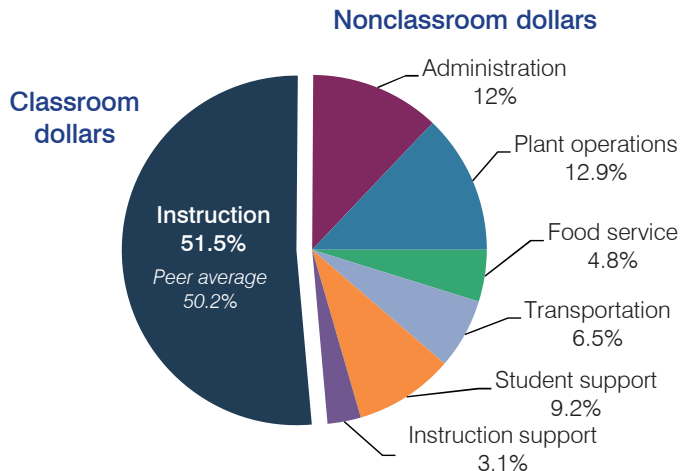
# Benson Unified School District

Cochise County  
 Efficiency peer groups 5 and T-8, Achievement peer group 5  
 Legislative district(s): 14

District size, location: Medium, Town  
 Students attending: 1,193  
 Number of schools: 4

## OPERATIONAL EFFICIENCY

### Spending by operational area



### Efficiency measures relative to peer averages

Operational area	Measure	District	Peer average	State average
Administration	Cost per pupil	\$927	\$1,075	\$780
	Students per administrative position	58	58	67
Plant operations	Cost per square foot	\$6.09	\$4.90	\$6.09
	Square footage per student	163	258	153
Food service	Cost per meal equivalent	\$3.21	\$3.39	\$2.79
Transportation	Cost per mile	\$3.43	\$2.54	\$3.66
	Cost per rider	\$785	\$854	\$1,071

Very low   Low   Comparable   High   Very high

### Per pupil spending

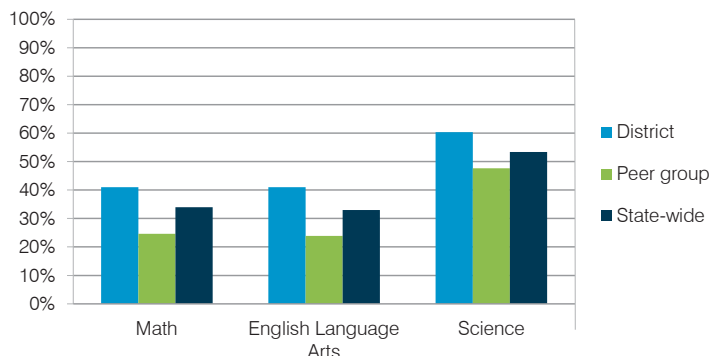
Spending by area	District		Peer average	State average
	2014	2015	2015	2015
Instruction	\$ 4,149	\$ 3,969	\$ 4,428	\$ 4,105
Administration	843	927	1,075	780
Plant operations	1,008	991	1,203	930
Food service	389	371	428	417
Transportation	495	496	498	371
Student support	682	711	623	613
Instruction support	301	238	353	442
<b>Total operational</b>	<b>\$ 7,867</b>	<b>\$ 7,703</b>	<b>\$ 8,608</b>	<b>\$ 7,658</b>
Land and buildings	\$ 44	\$ 117	\$ 504	\$ 641
Equipment	324	231	492	383
Interest	257	239	248	225
Other	75	63	57	150
<b>Total nonoperational</b>	<b>\$ 700</b>	<b>\$ 650</b>	<b>\$ 1,301</b>	<b>\$ 1,399</b>
<b>Total per pupil spending</b>	<b>\$ 8,567</b>	<b>\$ 8,353</b>	<b>\$ 9,909</b>	<b>\$ 9,057</b>

## STUDENT AND TEACHER MEASURES, FINANCIAL ASSESSMENT, AND REVENUE

### Student and teacher measures

Measure	District	Peer average	State average
Attendance rate	95%	94%	94%
Graduation rate (2014)	85%	81%	76%
Poverty rate (2014)	26%	24%	23%
Students per teacher	18.6	16.7	18.6
Average teacher salary	\$42,458	\$43,855	\$46,008
Average years of teacher experience	12.3	12.3	11.0
Percentage of teachers in first 3 years	12%	18%	20%

### Students who met state standards



### Financial stress assessment

Overall financial stress level: **Moderate**

Measure: 2013 through 2015	Assessment
Change in number of district students	Increase
Spending exceeded operating/capital budgets	No overspending
Spending increase election results	No election held
Operating reserve percentage (max. 4%), trend	1.5%, Varying
Years of capital reserve held	1 to 3 years
Current financial and internal control status	Compliant

Low   Moderate   High

### Per pupil revenues

Revenues by source	District		Peer average	State average
	2014	2015	2015	2015
Federal	\$ 943	\$ 848	\$ 3,790	\$ 1,299
State	2,906	3,460	3,700	3,517
Local	4,791	4,720	4,105	4,248
<b>Total revenues per pupil</b>	<b>\$ 8,640</b>	<b>\$ 9,028</b>	<b>\$11,595</b>	<b>\$ 9,064</b>
<b>Select revenues from common sources</b>				
Equalization formula funding	\$ 5,431	\$ 5,556	\$ 5,693	\$ 5,303
Grants	970	874	1,675	1,167
Donations and tax credits	136	52	140	78
<b>Select revenues from less common sources</b>				
Desegregation	\$ 0	\$ 0	1 of 29	
Small school adjustment	0	0	0 of 29	
Federal impact aid	0	0	15 of 29	
Voter-approved levy increases	1,101	1,121	19 of 29	

# Benson USD—page 2

## Classroom dollar percentage

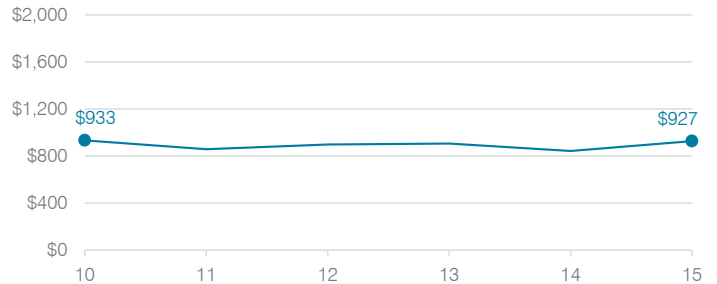
Year:	2001	2002	2003	2004	2005	2006	2007	2008	2009	2010	2011	2012	2013	2014	2015
Percentage:	49.5	54.0	53.7	57.4	57.8	58.6	56.9	56.9	55.8	54.4	52.4	54.1	53.1	52.7	51.5

### OPERATIONAL TRENDS Fiscal years as indicated

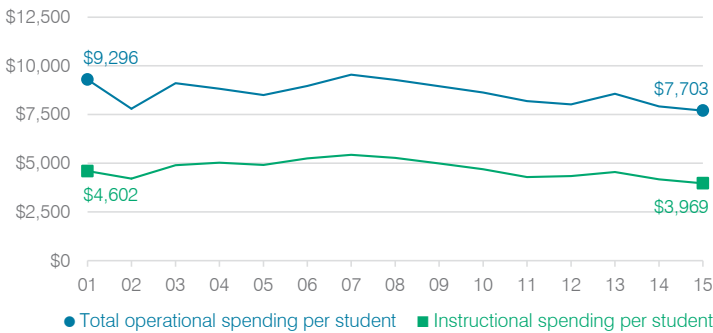
#### 5-year spending trend (2010 through 2015)

Total operational spending per pupil, adjusted for inflation, decreased by 11 percent. The percentage of dollars spent in the classroom varied year to year, decreasing overall from 54.4 to 51.5 percent. As a percentage of total operational spending, student support increased and food service increased slightly. Most other nonclassroom areas varied year to year.

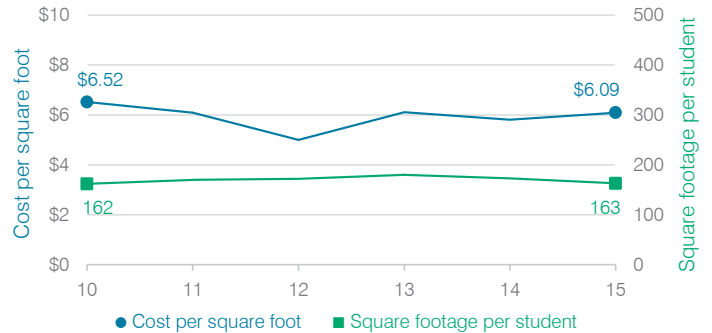
#### Administrative cost per student



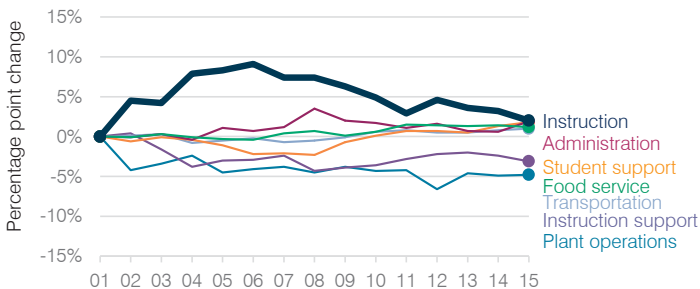
#### Total operational and instructional spending per student (inflation adjusted to 2015 dollars)



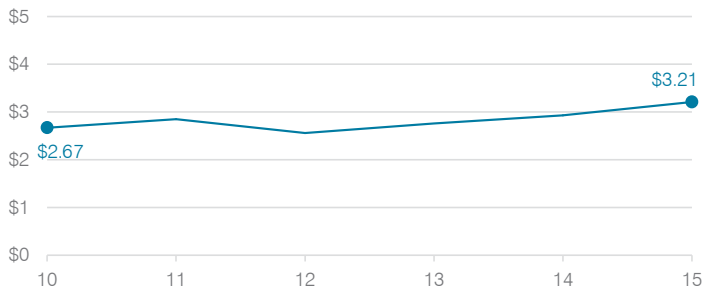
#### Plant cost per square foot and square footage per student



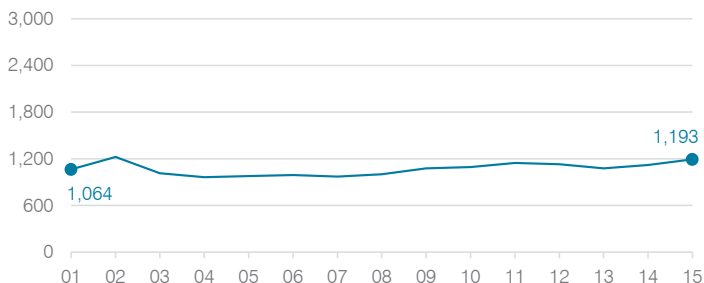
#### Changes in operational spending percentages



#### Food service cost per meal



#### Students attending



#### Transportation costs per mile and per rider

