

Bicentennial Union High School District

La Paz County

Efficiency peer groups 11 and T-11, Achievement peer group 11

Legislative district(s): 5

District size, location:

Very small, Rural

Students attending:

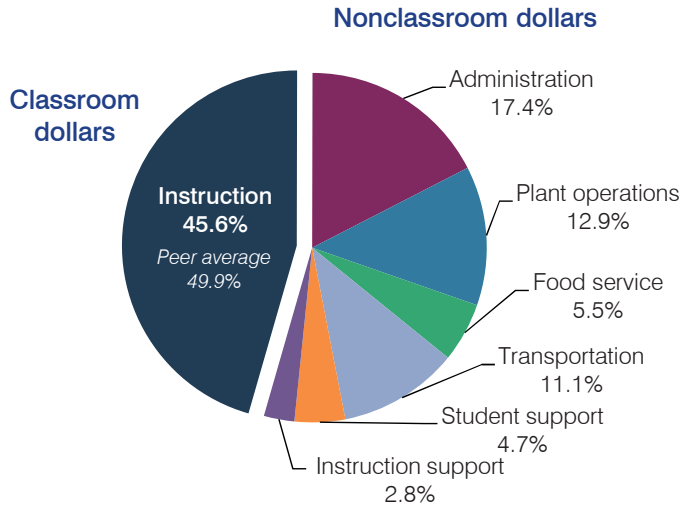
101

Number of schools:

1

OPERATIONAL EFFICIENCY

Spending by operational area



Efficiency measures relative to peer averages

| Operational area | Measure | District | Peer average | State average |
|------------------|--------------------------------------|----------|--------------|---------------|
| Administration | Cost per pupil | \$2,919 | \$3,013 | \$780 |
| | Students per administrative position | 25 | 29 | 67 |
| Plant operations | Cost per square foot | \$3.93 | \$6.80 | \$6.09 |
| | Square footage per student | 550 | 370 | 153 |
| Food service | Cost per meal equivalent | \$4.29 | \$5.66 | \$2.79 |
| Transportation | Cost per mile | \$1.25 | \$1.55 | \$3.66 |
| | Cost per rider | \$1,818 | \$1,620 | \$1,071 |

Per pupil spending

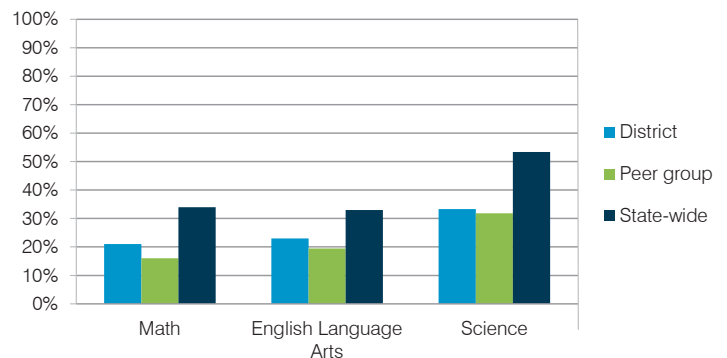
| Spending by area | District | | Peer average | State average |
|---------------------------------|------------------|------------------|------------------|-----------------|
| | 2014 | 2015 | 2015 | 2015 |
| Instruction | \$ 7,462 | \$ 7,662 | \$ 8,258 | \$ 4,105 |
| Administration | 2,671 | 2,919 | 3,013 | 780 |
| Plant operations | 2,205 | 2,163 | 2,390 | 930 |
| Food service | 885 | 933 | 967 | 417 |
| Transportation | 2,249 | 1,870 | 1,127 | 371 |
| Student support | 790 | 790 | 664 | 613 |
| Instruction support | 294 | 469 | 572 | 442 |
| Total operational | \$ 16,556 | \$ 16,806 | \$ 16,991 | \$ 7,658 |
| Land and buildings | \$ 266 | \$ 833 | \$ 961 | \$ 641 |
| Equipment | 536 | 511 | 582 | 383 |
| Interest | 222 | 122 | 40 | 225 |
| Other | 0 | 5 | 90 | 150 |
| Total nonoperational | \$ 1,024 | \$ 1,471 | \$ 1,673 | \$ 1,399 |
| Total per pupil spending | \$ 17,580 | \$ 18,277 | \$ 18,664 | \$ 9,057 |

STUDENT AND TEACHER MEASURES, FINANCIAL ASSESSMENT, AND REVENUE

Student and teacher measures

| Measure | District | Peer average | State average |
|---|----------|--------------|---------------|
| Attendance rate | 94% | 93% | 94% |
| Graduation rate (2014) | 85% | 79% | 76% |
| Poverty rate (2014) | 36% | 28% | 23% |
| Students per teacher | 7.8 | 12.1 | 18.6 |
| Average teacher salary | \$36,107 | \$40,520 | \$46,008 |
| Average years of teacher experience | 6.5 | 11.2 | 11.0 |
| Percentage of teachers in first 3 years | 58% | 25% | 20% |

Students who met state standards



Financial stress assessment

Overall financial stress level: **Moderate**

| Measure: 2013 through 2015 | Assessment |
|---|-------------------------|
| Change in number of district students | Small school adjustment |
| Spending exceeded operating/capital budgets | Operating only |
| Spending increase election results | No election held |
| Operating reserve percentage (max. 4%), trend | 0.4%, Decreasing |
| Years of capital reserve held | 1 to 3 years |
| Current financial and internal control status | Compliant |

Low Moderate High

Per pupil revenues

| Revenues by source | District | | Peer average | State average |
|---|-----------------|-----------------|----------------------------------|-----------------|
| | 2014 | 2015 | 2015 | 2015 |
| Federal | \$ 2,652 | \$ 1,735 | \$ 2,858 | \$ 1,299 |
| State | 1,446 | 1,812 | 4,521 | 3,517 |
| Local | 16,344 | 16,441 | 13,591 | 4,248 |
| Total revenues per pupil | \$20,442 | \$19,988 | \$20,970 | \$ 9,064 |
| Select revenues from common sources | | | | |
| Equalization formula funding | \$ 11,288 | \$ 10,149 | \$ 9,139 | \$ 5,303 |
| Grants | 2,683 | 2,307 | 3,089 | 1,167 |
| Donations and tax credits | 69 | 266 | 159 | 78 |
| Select revenues from less common sources | | | | |
| | | | Number of peers receiving | |
| Desegregation | \$ 0 | \$ 0 | 0 of 53 | |
| Small school adjustment | 0 | 0 | 41 of 53 | |
| Federal impact aid | 0 | 0 | 3 of 53 | |
| Voter-approved levy increases | 3,205 | 1,635 | 7 of 53 | |

Bicentennial UHSD—page 2

Classroom dollar percentage

| Year: | 2001 | 2002 | 2003 | 2004 | 2005 | 2006 | 2007 | 2008 | 2009 | 2010 | 2011 | 2012 | 2013 | 2014 | 2015 |
|-------------|------|------|------|------|------|------|------|------|------|------|------|------|------|------|------|
| Percentage: | 41.6 | 58.2 | 50.6 | 50.1 | 47.4 | 46.0 | 45.4 | 36.4 | 42.0 | 36.5 | 41.5 | 42.4 | 46.8 | 45.1 | 45.6 |

OPERATIONAL TRENDS

Fiscal years as indicated

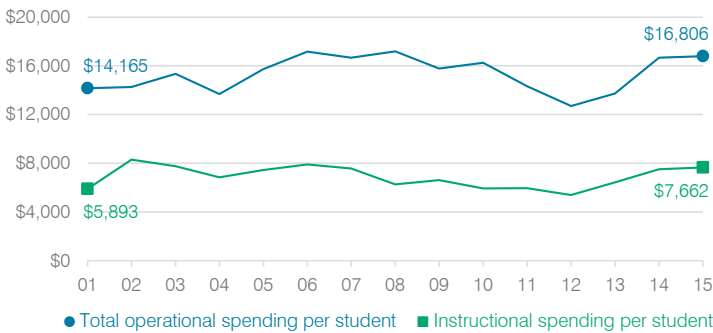
5-year spending trend (2010 through 2015)

Total operational spending per pupil, adjusted for inflation, increased by 3 percent. The percentage of dollars spent in the classroom varied year to year, increasing overall from 36.5 to 45.6 percent. As a percentage of total operational spending, most nonclassroom areas also varied year to year, as is common for very small districts. Overall, transportation and student support decreased substantially.

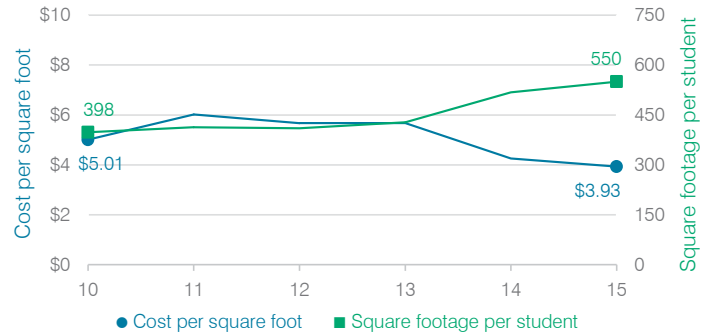
Administrative cost per student



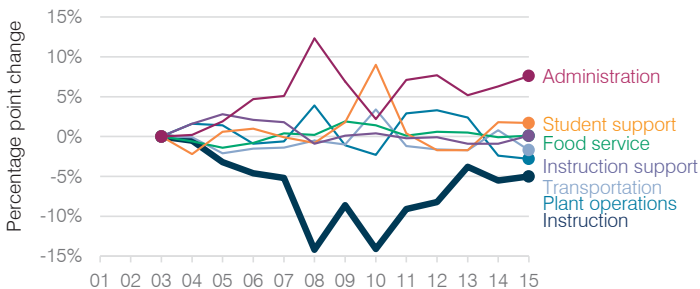
Total operational and instructional spending per student (inflation adjusted to 2015 dollars)



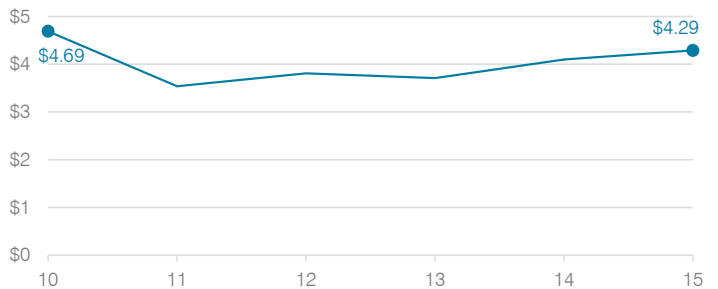
Plant cost per square foot and square footage per student



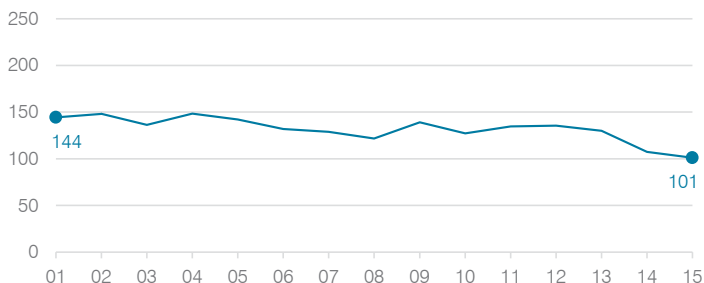
Changes in operational spending percentages



Food service cost per meal



Students attending



Transportation costs per mile and per rider

