

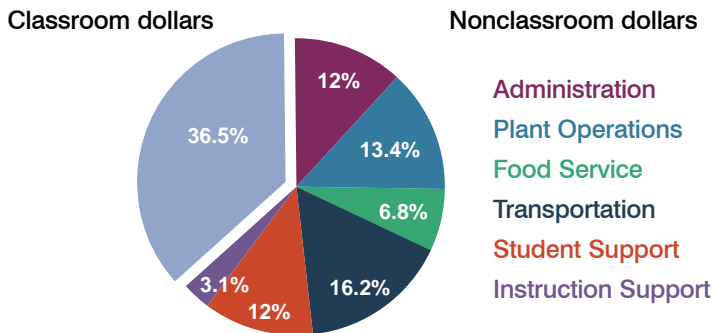
# Bicentennial Union High School District

La Paz County  
Peer groups: Efficiency 7, Achievement 12  
Legislative district(s): 24

District size: Very Small  
Students attending: 127  
Number of schools: 1

## OPERATIONAL EFFICIENCY

### Spending by function

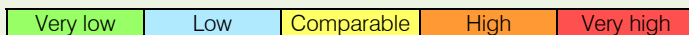


### 5-year trend

Total spending per pupil increased by 17 percent. Spending in the classroom was very inconsistent year to year, decreasing significantly overall from 47.4 to 36.5 percent. Spending on transportation, food service, and student support increased significantly, while spending in other nonclassroom areas was inconsistent year to year.

### District's cost measures relative to peer group

Operational Area	Measure	District	Peer Average	State Average
Administration	Cost per pupil	\$1,790	\$2,555	\$721
	Students per administrator	25	28	66
Plant Operations	Cost per square foot	\$5.01	\$4.77	\$6.25
	Square footage per student	398	509	146
Food Service	Cost per meal equivalent	\$4.69	\$4.98	\$2.41
Transportation	Cost per mile	\$2.19	\$1.78	\$3.35
	Miles per rider	1,629	1,443	282

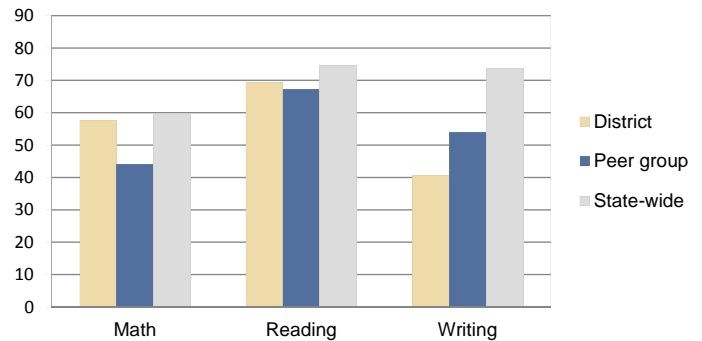


### Per-pupil spending by function

	District		Peer 2010	State 2010	National 2008
	2009	2010			
<b>Total</b>	<b>\$14,308</b>	<b>\$14,880</b>	<b>\$16,816</b>	<b>\$7,609</b>	<b>\$10,297</b>
<b>Classroom dollars</b>	<b>\$6,007</b>	<b>\$5,424</b>	<b>\$8,229</b>	<b>\$4,253</b>	<b>\$6,262</b>
<b>Nonclassroom dollars:</b>	<b>\$8,301</b>	<b>\$9,456</b>	<b>\$8,587</b>	<b>\$3,356</b>	<b>\$4,035</b>
Administration	2,392	1,790	2,555	721	1,109
Plant Operations	2,086	1,996	2,717	914	1,003
Food Service	1,044	1,005	813	366	390
Transportation	1,694	2,409	1,262	342	438
Student Support	689	1,793	751	581	556
Instruction Support	396	463	489	432	539

## STUDENT ACHIEVEMENT AND TEACHER INFORMATION

### Percentage of students meeting state standards (AIMS)



### Adequate Yearly Progress (AYP) toward federal goals

The District's school did not meet all applicable AYP objectives for NCLB, because its graduation rate was not sufficient.

### Student and teacher information

Measure	District	Peer Average	State Average
Attendance rate	94%	93%	94%
Graduation rate (2009)	69%	73%	76%
Poverty rate (2009)	38%	30%	21%
Student/teacher ratio	10.6	16.1	17.9
Average teacher salary	\$36,626	\$41,651	\$47,077
Average years' experience	11.0	12.3	10.6
Percent of teachers in first 3 years	40%	22%	20%

### Proposition 301

#### Teacher and other staff pay

On average, each teacher and the librarian earned \$4,426 in additional pay.

#### Performance pay plan goals and results

Type of goal	Goal met?
Student achievement	■
Dropout/graduation rates	-
Student attendance	-
Parent/student satisfaction	-
Teacher attendance	-
Teacher professional development	■
Teacher evaluations	■
Tutoring	■
Other	■

■ = yes, □ = no, ▴ = partially, and - = no goal set