

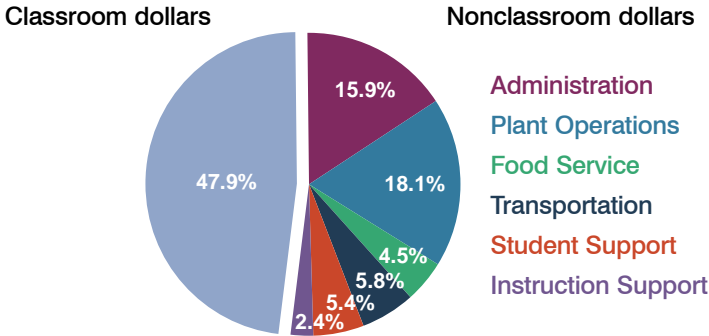
# Bisbee Unified School District

Cochise County  
Peer groups: Efficiency Group 5, Achievement Group 8  
Legislative district(s): 25

District size: Medium  
Students attending: 902  
Number of schools: 3

## OPERATIONAL EFFICIENCY

### Spending by operational area



### 5-year trend

Total spending per pupil increased by 2 percent. Spending in the classroom decreased significantly from 52.1 to 47.9 percent. Overall, spending on administration and plant operations increased significantly, while spending on other nonclassroom areas remained fairly stable.

### District's cost measures relative to peer group

Operational Area	Measure	District	Peer Average	State Average
Administration	Cost per pupil	\$1,255	\$1,104	\$728
	Students per administrator	49	56	66
Plant Operations	Cost per square foot	\$5.66	\$4.74	\$6.10
	Square footage per student	253	259	152
Food Service	Cost per meal equivalent	\$2.71	\$2.98	\$2.45
Transportation	Cost per mile	\$5.45	\$2.71	\$3.39
	Miles per rider	231	336	283

Very low   Low   Comparable   High   Very high

### Per-pupil spending by operational area

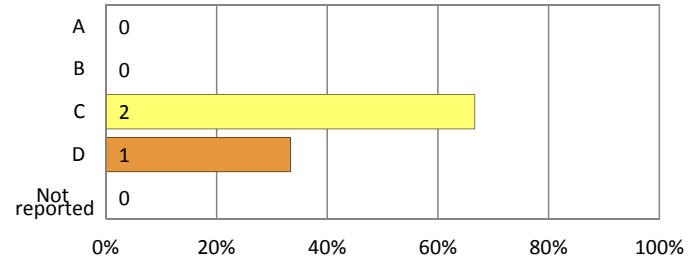
	District		Peer 2011	State 2011	National 2009
	2010	2011			
<b>Total</b>	<b>\$8,370</b>	<b>\$7,901</b>	<b>\$8,531</b>	<b>\$7,485</b>	<b>\$10,591</b>
<b>Classroom dollars</b>	<b>\$4,339</b>	<b>\$3,781</b>	<b>\$4,298</b>	<b>\$4,098</b>	<b>\$6,456</b>
<b>Nonclassroom dollars:</b>	<b>\$4,031</b>	<b>\$4,120</b>	<b>\$4,233</b>	<b>\$3,387</b>	<b>\$4,135</b>
Administration	1,338	1,255	1,104	728	1,147
Plant Operations	1,200	1,432	1,213	927	1,033
Food Service	371	356	421	375	404
Transportation	495	459	527	352	443
Student Support	453	427	651	571	573
Instruction Support	174	191	317	434	535

## STUDENT ACHIEVEMENT AND TEACHER INFORMATION

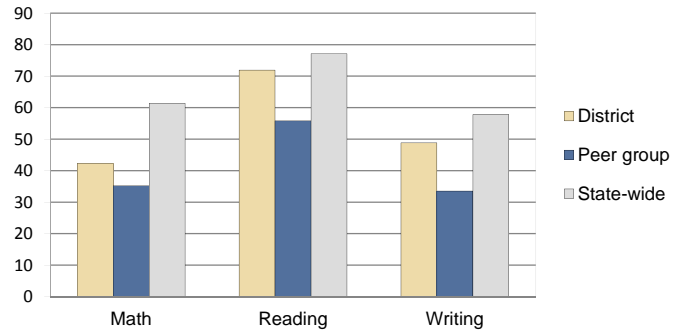
### District and school letter grades

District grade: **C**

### School grades (number and percentage):



### Percentage of students meeting state standards (AIMS)



### Student and teacher information

Measure	District	Peer Average	State Average
Attendance rate	91%	92%	95%
Graduation rate (2010)	74%	68%	78%
Poverty rate (2010)	37%	40%	22%
Students per teacher	20.0	15.5	18.1
Average teacher salary	\$44,540	\$42,449	\$45,637
Average years of experience	12.5	12.2	10.9
Percent of teachers in first 3 years	13%	16%	16%

### Proposition 301 pay, goals, and results

Average additional salary earned by teachers: \$4,355

Type of goal	Goal met?
Student achievement	■
Dropout/graduation rates	-
Student attendance	-
Parent/student satisfaction	-
Teacher attendance	-
Teacher professional development	■
Teacher evaluations	-
Tutoring	-
Other	-

■ = yes, □ = no, ▬ = partially, and - = no goal set