

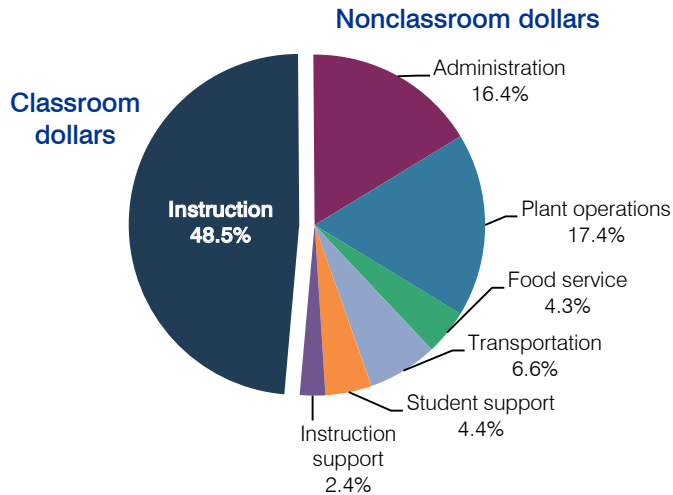
Bisbee Unified School District

Cochise County
 Efficiency peer groups 5 and T-12, Achievement peer group 7
 Legislative district(s): 14

District size / location: Medium, Town
 Students attending: 861
 Number of schools: 3

OPERATIONAL EFFICIENCY

Spending by operational area



5-year spending trend

Total spending per pupil decreased by 4 percent. Spending in the classroom varied year to year, decreasing overall from 49.7 to 48.5 percent. Spending on administration, plant operations, and transportation increased substantially, and spending on food service, student support, and instruction support decreased.

Cost measures relative to peer averages

Operational area	Measure	District	Peer average	State average
Administration	Cost per pupil	\$1,298	\$1,074	\$736
	Students per administrator	56	56	66
Plant operations	Cost per square foot	\$5.69	\$4.82	\$6.09
	Square footage per student	243	250	152
Food service	Cost per meal equivalent	\$3.23	\$2.97	\$2.47
Transportation	Cost per mile	\$3.53	\$2.02	\$3.50
	Cost per rider	\$1,867	\$1,181	\$982

Very low Low Comparable High Very high

Per-pupil spending by operational area

	District		Peer average	State average	National average
	2011	2012	2012	2012	2010
Total	\$7,901	\$7,921	\$8,416	\$7,475	\$10,652
Classroom dollars	3,781	3,840	4,202	4,053	6,526
Nonclassroom dollars:	4,120	4,081	4,214	3,422	4,126
Administration	1,255	1,298	1,074	736	1,139
Plant operations	1,432	1,383	1,179	928	1,012
Food service	356	343	412	382	405
Transportation	459	520	536	362	443
Student support	427	350	619	578	592
Instruction support	191	187	394	436	535

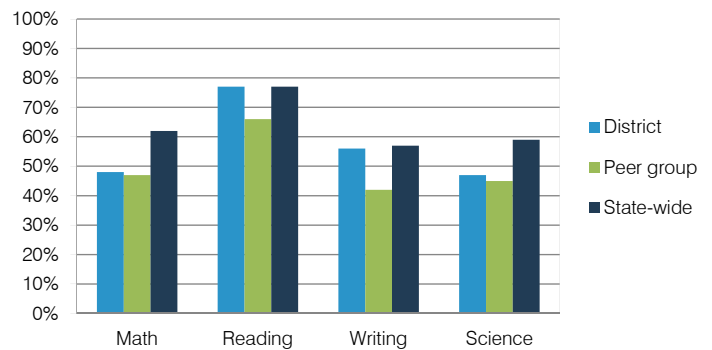
STUDENT ACHIEVEMENT, TEACHER MEASURES, AND FINANCIAL ASSESSMENT

ADE-reported district and school letter grades

District grade: **B**

Grade	Number of schools	Percentage of schools
A	0	0%
B	1	33%
C	2	67%
D	0	0%
F	0	0%
Not rated	0	0%

Percentage of students who met state standards (AIMS)



Student and teacher measures

Measure	District	Peer average	State average
Attendance rate	93%	93%	94%
Graduation rate (2011)	76%	76%	78%
Poverty rate (2011)	37%	40%	25%
Students per teacher	17.2	15.6	18.1
Average teacher salary	\$38,413	\$42,644	\$45,193
Amount from Proposition 301	\$5,072	\$3,127	\$3,195
Average years of teacher experience	14.0	13.0	11.0
Percentage of teachers in first 3 years	6%	13%	16%

Financial stress assessment

Overall financial stress level: **Moderate**

Measure: 2010 through 2012	Assessment
Number of students attending	Moderate decrease
Spending exceeded operating/capital budgets	No overspending
Spending increase election results	Voter-approved
Operating reserve percentage (max. 4%), trend	3.9%, Steady
Years of capital reserve held	1 to 3 years
Current financial and internal control status	Marginally compliant

