

# Bisbee Unified School District

Cochise County  
Operational peer group: E  
Legislative districts: 25

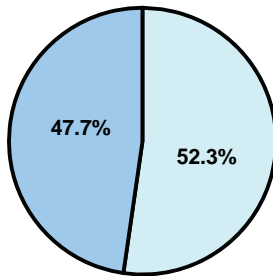
District size: Medium  
Students attending: 901  
Number of schools: 4

## OPERATIONAL EFFICIENCY

### Average per-pupil spending

District  
State

**Classroom**  
**\$3,990**  
\$4,497



**Nonclassroom**  
**\$4,376**  
\$3,411

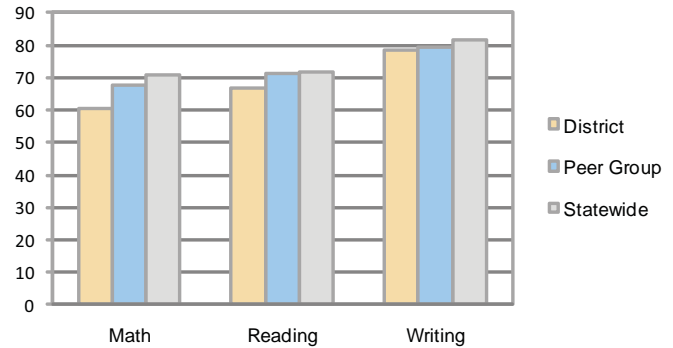
**Total**  
**\$8,366**  
\$7,908

### 5-year trend

Total spending per pupil increased by 19 percent. Spending in the classroom decreased significantly from 54.1 to 47.7 percent. Spending on administration and plant operations increased significantly, while spending in other nonclassroom areas remained fairly stable.

## STUDENT ACHIEVEMENT AND TEACHER INFORMATION

### Percentage of students meeting state standards (AIMS)



### Adequate Yearly Progress (AYP) toward federal goals

4 schools met all applicable AYP objectives for NCLB.

### District's cost measures relative to peer group

Operational Area	Measure	District	Peer Average	State Average
Administration	Cost per pupil	\$1,257	\$1,148	\$729
	Students per administrator	45	51	66
Plant Operations	Cost per square foot	\$5.56	\$5.49	\$6.40
	Square footage per student	253	253	144
Food Service	Cost per meal equivalent	\$4.50	\$3.07	\$2.53
Transportation	Cost per mile	\$3.11	\$2.53	\$3.36
	Miles per rider	418	359	271

Very Low   Low   Comparable   High   Very High

### Student and teacher information

Measure	District	Peer average	State average
Attendance rate	95%	95%	95%
Graduation rate (2008)	71%	70%	75%
Poverty rate	18%	15%	19%
Student/teacher ratio	16.7	16.8	17.1
Average teacher salary	\$38,623	\$42,842	\$45,209
Average years' experience	13.4	10.1	8.3
Percent of teachers in first 3 years	11%	24%	16%

### Proposition 301

#### Teacher pay

On average, each teacher earned \$4,087 in additional salary, and each librarian earned an additional \$3,581.

### Per-pupil spending by function

	District		Peer	State	National
	2008	2009	2009	2009	2007
<b>Total</b>	<b>\$8,815</b>	<b>\$8,366</b>	<b>\$9,562</b>	<b>\$7,908</b>	<b>\$9,683</b>
<b>Classroom dollars</b>	<b>\$4,344</b>	<b>\$3,990</b>	<b>\$4,925</b>	<b>\$4,497</b>	<b>\$5,903</b>
<b>Nonclassroom dollars:</b>	<b>\$4,471</b>	<b>\$4,376</b>	<b>\$4,637</b>	<b>\$3,411</b>	<b>\$3,780</b>
Administration	1,304	1,257	1,148	729	1,050
Plant Operations	1,313	1,409	1,379	920	951
Food Service	521	427	444	382	369
Transportation	502	494	554	343	406
Student Support	525	475	749	594	512
Instruction Support	306	314	356	431	470
Other	0	0	7	12	22

### Performance pay plan goals and results

Type of goal	Goal met?
Student achievement	■
Dropout/ graduation rates	
Student attendance	
Parent/student satisfaction	
Teacher attendance	
Teacher professional development	■
Teacher evaluations	
Tutoring	
Other	

■ = yes, □ = no, and ▴ = partially